



TURNSTYLE
DESIGNS

MADE IN ENGLAND

LATCHING HANDLES



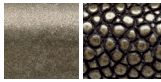


Shown here – Hand cutting a leather Wave cabinet handle

contents



metal finishes 4



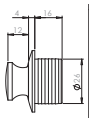
Amalfine™ and leather finishes 5



Amalfine™ manufacturing 7



lux push button cabinet knobs 8-9



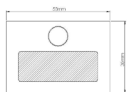
push button technical information 10-11



solid manufacturing 13



latching handles 15



latching handle technical information 16-17



latching handles 18-19



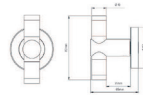
tube T bar handles 20



barrel T bar handles 21



cabinet T bar handles 23



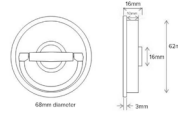
T bar technical information 24-25



leather manufacturing 27



flush hardware and locks 28



flush hardware technical information 29



design your own handles 31



custom 33



collections complete the look 34-35



door and furniture hardware brochures 37

finishes

Living finishes

Living finishes are designed to change with time and use. Brass components are polished and then treated in a number of different ways to change the surface, either by accelerated aging as with the Vintage and Burnished finishes or brushing as with our Satin Brass.

Brass Living



Polished Brass (PU)

Solid brass, expertly polished to a high sheen, pure and simple with nothing added to allow the natural aging process or keep it polished with any good brass cleaning products. **LV-EXT**



Vintage Patina (VP)

Hand polished brass base, matt treatment before patinated to a rich dark brown, lightly distressed for highlights. Finished with a durable wax coating. **LV-EXT**



Fine Antique Brass (FA)

Hand polished brass, lightly patinated and brushed to highlight and contrast. Finished with a durable wax coating. **LV-EXT**



Satin Brass (TW)

Hand polished, then wire brushed for a golden finish. Wax coated. This finish will darken with age unless kept polished. **LV-INT**



Vintage Nickel (VN)

Nickel plated brass, skilfully patinated by our team of craftsmen, followed by hand distressing and wax polishing. **LV-INT**

All living finishes are finished with a highly durable wax, which will wear according to use, we do not use Lacquer, so as to avoid uneven blotchy wear.

Brass living finishes can be used outdoors, but will be subject to the specific atmosphere of the location and change accordingly.

Brass Plated



Bright Chrome (BC)

Sometimes referred to as Polished Chrome, solid brass base, highly polished, nickel base coat with a durable chrome top coat. Easy to maintain and our most durable finish. **PL-EXT**



Polished Nickel (PN)

Solid brass base, finished with our beautifully subtle nickel plating, silver with hints of yellow. Superb in contemporary or traditional interiors. Clean with any quality nickel polish. **PL-INT**



Satin Nickel (SN)

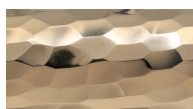
Still our most popular plated finish, solid brass with a fantastic, flat satin nickel plating, no brushwork. A superbly versatile finish that will stand the test of time. **PL-INT**



Matt Black Chrome (CB)

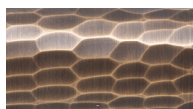
Our latest addition to our plated finishes, a four step process developed by our highly skilled team of finishers, this is a completely matt black plated finish. Highly durable and practical for interior or exterior use. **PL-EXT**

Hammered Living



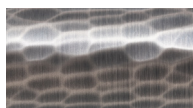
Polished Brass (PU)

Solid brass, expertly polished, then hammered and polished a second time to a high sheen, with subtle light refraction. Either allow the natural aging process or keep it polished with any good brass cleaning products. **LV-EXT**



Burnished Brass (BH)

For our hammered finishes we use a more gentle technique to patinate, each piece is hand burnished to break the surface before being patinated, then subtly distressed, hand polished and waxed to give a luxurious antique finish, highlighting every hammer blow perfectly. **LV-EXT**



Burnished Nickel (NH)

Polished solid brass, individually hammered, then nickel plated before being hand burnished, patinated and distressed to be finished with a wax finish. Eight pairs of hands before assembly, QA and packing. **LV-INT**

Hammered Plated



Bright Chrome (BC)

Solid brass hand polished then individually hammered, before plated with a crisp and bright chrome plating. Highly reflective hammer blow texture that is easy to maintain and our most durable finish. **PL-EXT**



Polished Nickel (PN)

As with Chrome, solid brass, polished, hammered and re polished before being finished with our beautifully subtle nickel plating. Superb in contemporary or traditional interiors. Clean with any quality nickel polish. **PL-INT**

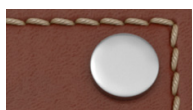


Satin Nickel (SN)

Solid brass, polished, individually hammered a thousand times, and finished with a fantastic, flat satin nickel plating, no brushwork. A superbly versatile finish that will stand the test of time. **PL-INT**

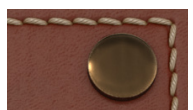
Code: LV - living finish. INT - interior use only. EXT - interior or exterior use. PL - plated finish

Button Finishes



Satin Chrome (SC)

Only available on full leather cabinet handles such as Bow, Cup and Strap as button finishes.



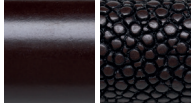
Antique Bronze (AB)

Only available on full leather cabinet handles such as Bow, Cup and Strap as button finishes.

Amalfine™

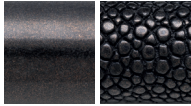
Warm to the touch, tactile and incredibly detailed our Amalfine™ finishes are also extremely durable and maintenance free. Each design and pattern translates differently according to the finish, see our website to view all designs in all finishes. Please note Amalfine™ designs are recommended for interior use only.

Amalfine™



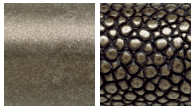
Cocoa (CO)

Dyed marble composite, plain designs reminiscent of mid century Bakelite.



Black Bronze (BB)

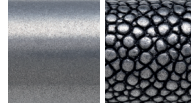
Dyed marble mixed with real bronze, highly polished to bring out the bronze highlights, a rich black that will go well in any interior.



Silver Bronze (SB)

Heavily loaded cold cast bronze, highly polished and waxed to produce a rich dark golden finish.

Amalfine™



Alupewt (AP)

A secret blend of composite metals, polished and dyed to bring out the highlights in the more detailed designs such as Shagreen.



Sand (SA)

Only available with specific designs such as Shagreen, Labyrinth, Hickory and Bullet.

Dyed marble, with a dark stain to produce a highly unique finish.



Bone (BN)

Made to order only, and only applicable to non textured designs.

Leather



Chestnut (CN)

A glorious, reddish, nutty brown, full of life and finished with a natural, off white thread.



Chocolate (CT)

A rich dark brown, our most popular colour, finished with a dark brown thread.



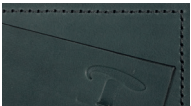
Black (BL)

A beautiful, subtle sheen, classic leather, finished with a black thread.



Tan (TA)

Light, luxurious leather, edged with a soft, natural thread.



Slate (GC)

A mid tone grey, growing in popularity, great with our silver plated finishes and edged with a silver grey thread.



White (BW)

White leather, white thread, white edging for a clean and contemporary look.

Woven Leather



Tobacco (TC)

A reddish brown mix of woven strands to produce our best selling classic.



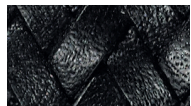
Flint Grey (FG)

A beautiful mid grey with a subtle dark smoked undertone.



Whisky (WK)

A light tan mix with dark edging.



Raven Black (RV)

Like the bird, a beautiful reflective black sheen, that comes alive as light catches it.

Leather like all natural materials will change with age, according to the situation, exposure to sunlight and usage (or lack of). The more you use it, the better it looks, the oils from your hands feed the leather and create a unique patina. Leather handles should only be used internally. Please see our leather care instructions for maintenance and cleaning.

Colour Variation

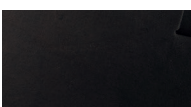
Vegetable tanning is an art rather than a science, please allow for slight variations in colour from batch to batch, this is all part of the charm of using such a beautiful and natural material.

Faux Leather



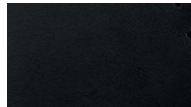
Attache Cognac (AC)

A colour match to our Chestnut Leather. Available only on flush products such as sliding door hardware, to avoid marking.



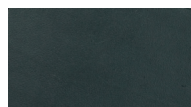
Black Tea (BT)

A colour match to our Chocolate Leather. Available only on flush products such as sliding door hardware, to avoid marking.



Finesse Black (FB)

A colour match to our Black Leather. Available only on flush products such as sliding door hardware, to avoid marking.



Destiny Storm (TS)

A colour match to our Slate Grey Leather. Available only on flush products such as sliding door hardware, to avoid marking.



Shown here – **Wire Cabinet Handles**

Amalfine™ manufacturing

Amalfine™ is a composite blend which has become one of our trademarks and is entirely unique to Turnstyle.

Incredibly versatile and durable, each piece is hand cast, finished and will pass through at least eight pairs of hands before finally being packed for dispatch. Every piece is unique with its own individually crafted character and charm.

The finishes in the Amalfine™ range are more like materials than finishes, the colour runs throughout the design so unlike a surface finish it cannot wear off.

Using highly flexible silicone rubber moulds we are able to reproduce finger print detail from the masters we cast from and de-mould the parts without a seam.

After de-moulding, each design is carefully machined down to remove excess material and where applicable to accurately fit its brass partner.

After around six to eight hours of various polishing stages the beautiful lustre will remain for many years to come.

Every piece is unique with its own individually crafted character and charm.

Turnstyle also offer a Custom Casting and finishing service. For better understanding of the process visit our website and view the production movies www.turnstyledesigns.com



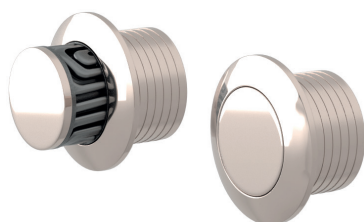
lux push button cabinet knobs

These luxury flush push button cabinet knobs are perfect for super yachts or as an original, elegant way to finish your cabinets. For further information visit our website or call our sales team. Precision engineered out of solid brass and designed to work with our lux push button latch. The come in Amalfine, Leather and Solid and our fully suited product ranges

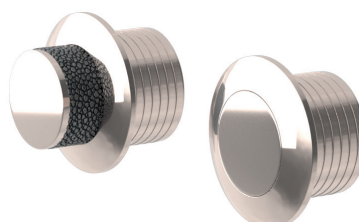
Shown here in a variety of designs and material finishes with polished nickel



Up to 54 finish combinations per design, visit [turnstyledesigns.com](https://www.turnstyledesigns.com)



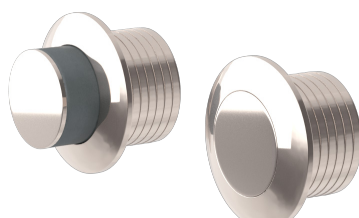
Labyrinth button on round
B9009



Shagreen button on round
P2993



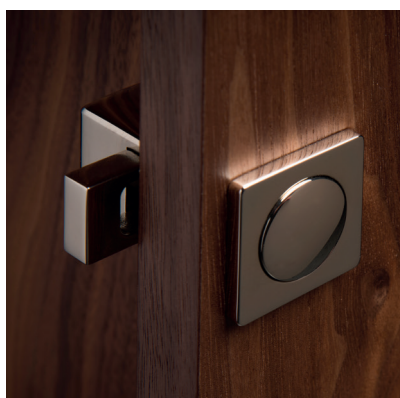
Wire button on round
P3008



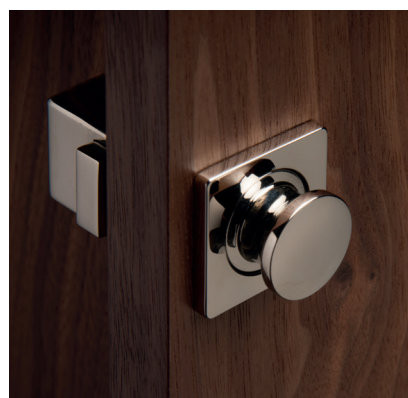
Recess leather button on round
R2986



Faceted button on round
P3013



Locked



Open

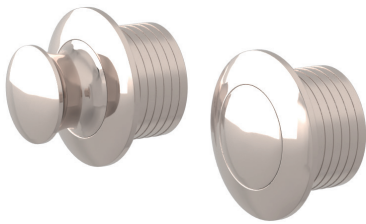
lux push button cabinet knobs

Precision engineered from solid brass to work with our lux push button latch, or more cost effective versions. These luxury push button knobs sit flat and flush when locked then push to release.

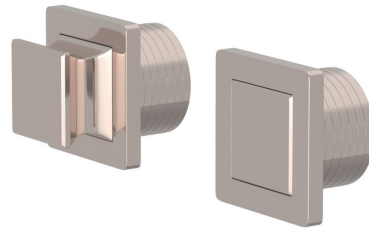
Shown here in Polished Nickel



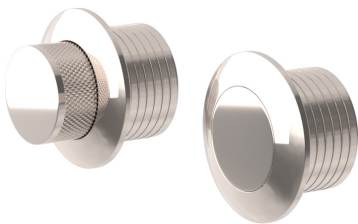
Up to 9 finishes per design, visit turnstyledesigns.com



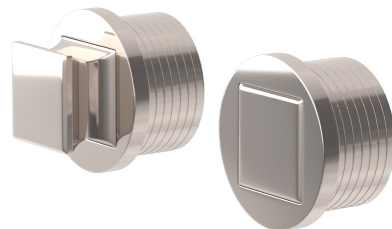
Domed button on round
S3044



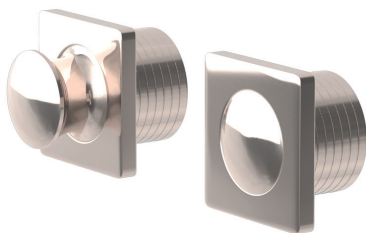
Square button on Square
S3049



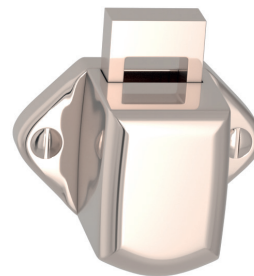
Knurled button on round
S3046



Square button on round
S3048



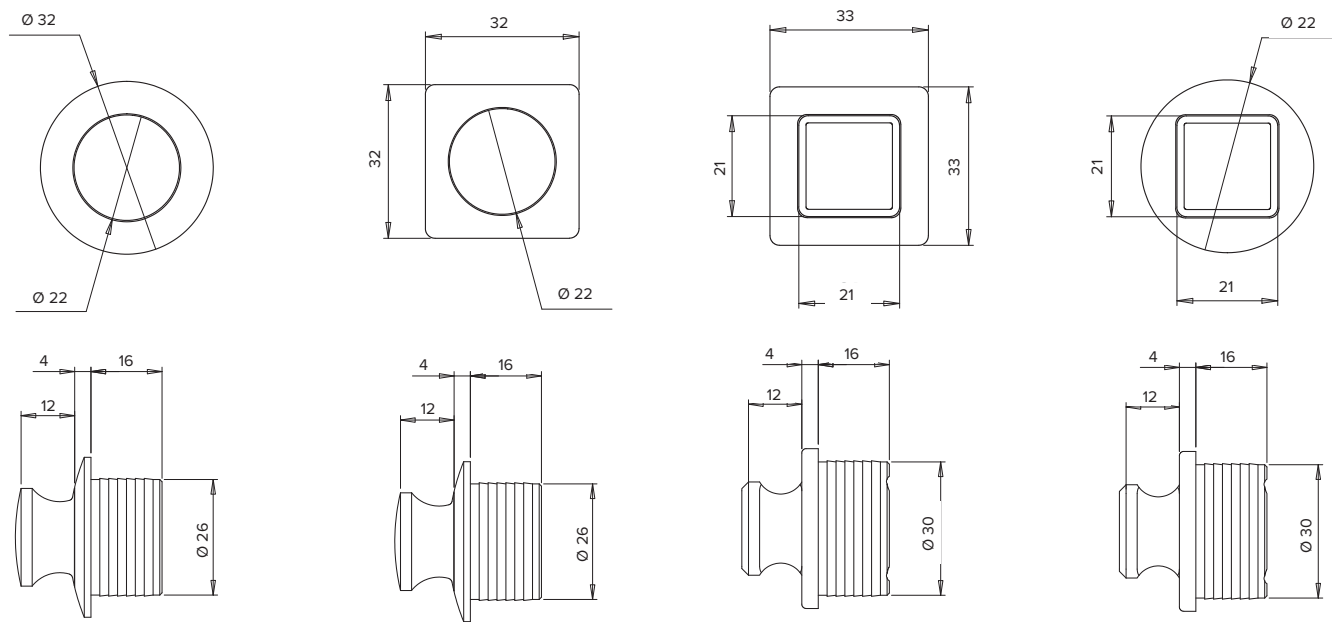
Domed button on square
S3045



Lux push button latch
PLK0210

Solid brass, very quiet action and precision engineered to last a lifetime.

technical information



Shagreen button on round
P2993

Recess leather button on round
R2986

Domed button on round
S3044

Knurled button on round
S3046

Domed button on square
S3045

Square button on Square
S3049

Square button on round
S3048

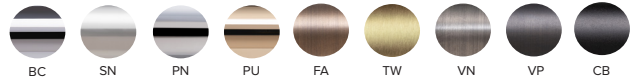
latching options

Mechanism	Lux Latch PLK210	Extended Lux Latch PLK211	Standard Small PSL004	Standard Large PSL018	Standard Large Espag PLK340	Espag Lux Latch PLK212
Back Set	19mm	Variable	15mm	25mm	25mm	Any
Material	Brass	Brass	Zinc Alloy & Plastic	Zinc Alloy & Plastic	Zinc Alloy	Brass
Finish Options	All Brass Options	All Brass Options	Matt Nickel	Matt Nickel	Matt Nickel	All Brass Options
Cabinet Thickness	19-40mm	19-40mm	19mm	22mm	22mm	19-40mm
PB Thread Required	M5	M5	M6	M6	M6	M5
Push Button & Rose	Yes	Yes	Yes	Yes	Yes	Yes

push button lux latches

Precision engineered, solid brass push button latch. What the Super-yacht market has been asking for is finally here. Quiet action, solid positive latching, reliable and guaranteed. Available with a wide choice of push buttons and comes in a choice of patinated or plated finishes.

Metal Finishes



s finally here. Quiet action, es in a choice of patinated or

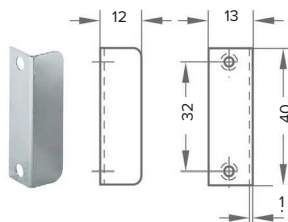
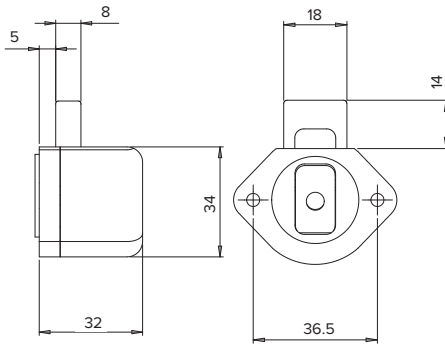


Push Button Lux Latch PLK210

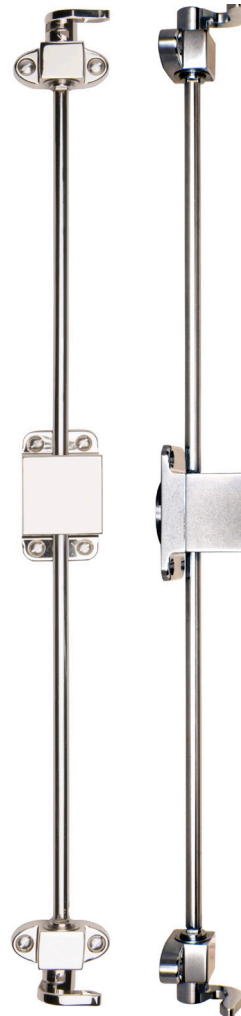


Push Button Lux Latch with Extender PLK211

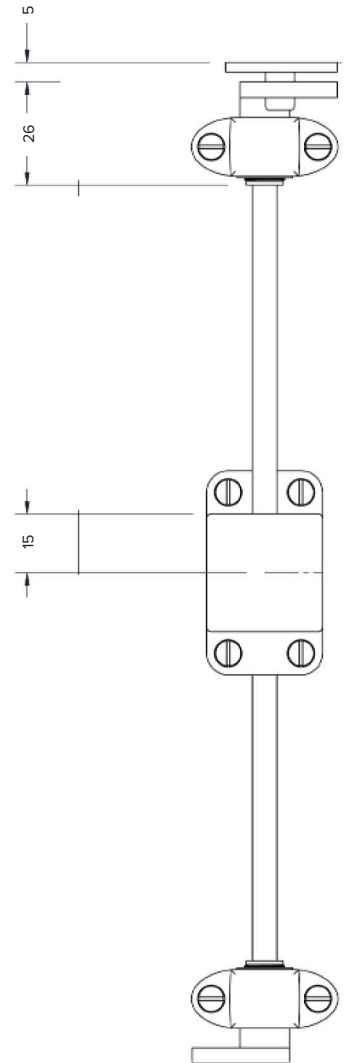
- Backset available 15mm to 350mm



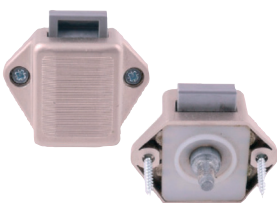
- Push Button Lux Latch comes with steel keep.



Lux Espagnolette PLK212



standard latches and espagnolettes



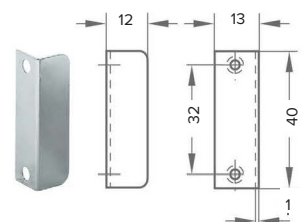
Standard Push Button Lock PSL004



Standard Push Button Lock PSL018



Standard Espagnolette PLK340



- Push Button Lux Latch comes with steel striking plate.

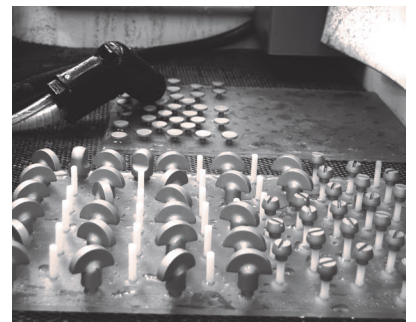
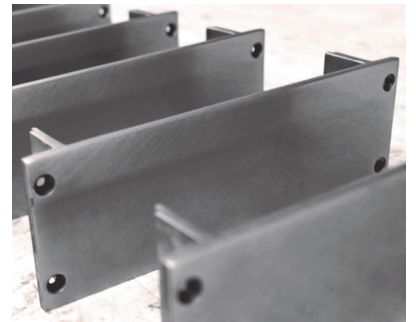


Shown here – **Scroll Cabinet T Bar**

Solid Brass

Turnstyle uses a host of manufacturing processes to produce the very best result for each design and product. These include CNC machining, turning, milling, forging, investment casting and extrusion. All carried out by highly skilled precision engineers.

A selection of our Solid designs are available with our hammered texture applied. Every design is individually hammered with up to a thousand hammer blows per grip, each handle is made to order and completely unique. Whatever finish you wish to apply, our Hammered range is a luxurious option and versatile enough to work in any interior.





Shown here – Solid Ledge latching handle in Polished Nickel

latching handles

More options for latching handles. Simple, ingenious ways of keeping your cabinets secure, lift the leather handle to release the catch and pull open or push the button to open. Not just for yachts, they are a better way to keep cupboards shut, smarter than magnetic or friction catches.

Shown here in Chestnut Leather and Bright Chrome.



Up to 54 finish combinations per design, visit turnstyledesigns.com



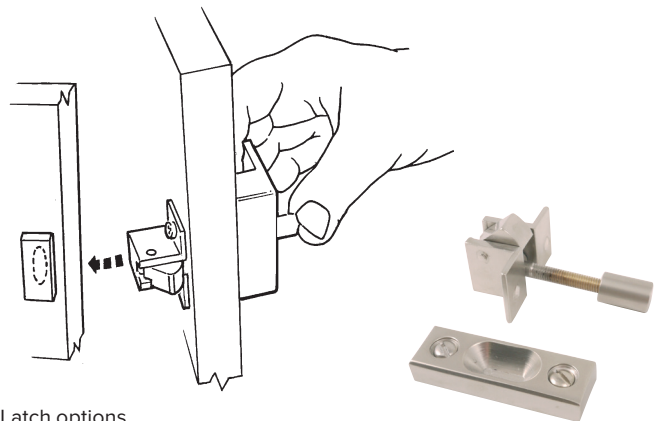
Solid Ledge **S1989**



Recess Leather Ledge **R1989**

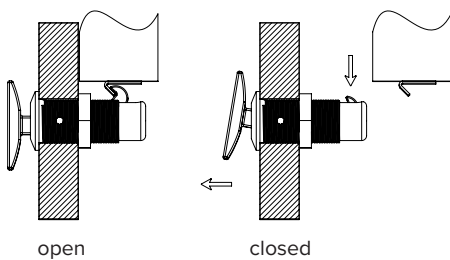


Hammered Ledge **HS1989**



Latch options
Sprung Latch and Stop/Keep

Solid brass, with brass stop/keep. Simple to fit, durable, quiet and reliable. Operates by pushing to release, automatically latches on closing.

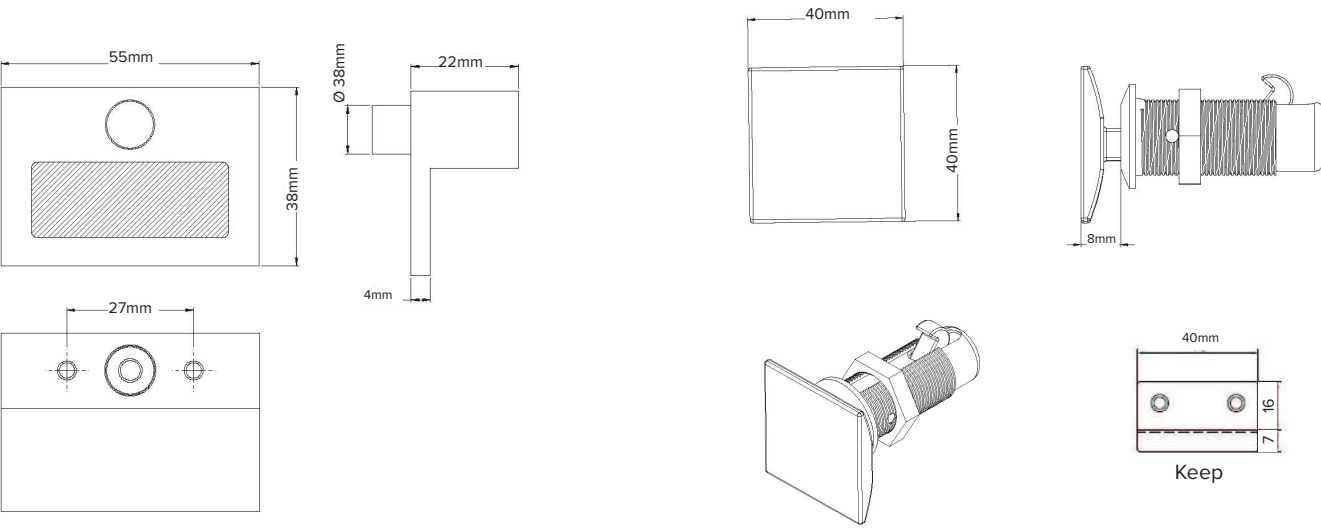


Lift Latch



Square **H2009**

technical information

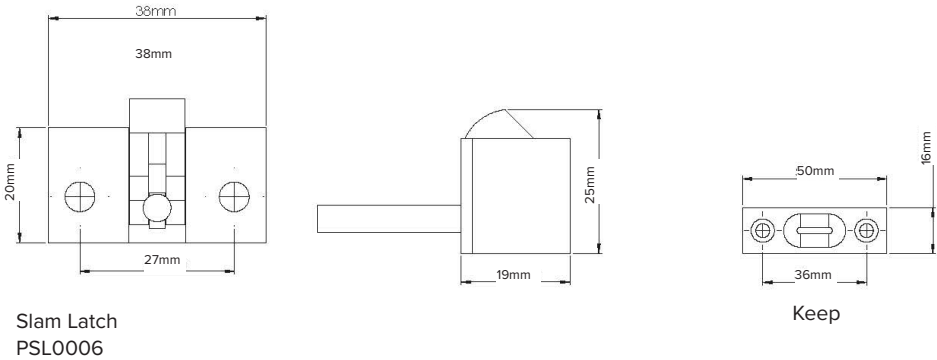


Recess leather ledge
R1989

Solid ledge
S1989

Hammered Solid Ledge
HS1989

Square
H2009
- 27mm max cabinet thickness



Slam Latch
PSL0006

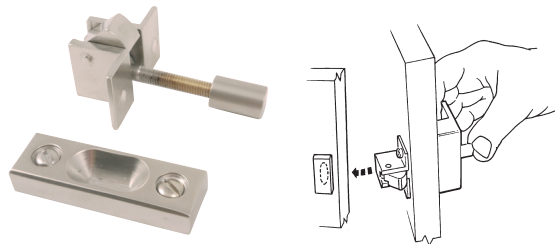
Keep

latching options

Mechanism	Lux Latch PLK210	Extended Lux Latch PLK211	Standard Small PSL004	Standard Large PSL018	Slam Latch PSL0006		Lift Latch H2009	Standard Large Espag PLK340	Espag Lux Latch PLK212
Back Set	19mm	Variable	15mm	25mm	12mm	12mm	28mm	25mm	Any
Material	Brass	Brass	Zinc Alloy & Plastic	Zinc Alloy & Plastic	Brass	Brass	Zinc Alloy and Leather	Zinc Alloy	Brass
Finish Options	All Brass Options	All Brass Options	Matt Nickel	Matt Nickel	All Brass Options	All Brass Options	All Standard Leather	Matt Nickel	All Brass Options
Cabinet Thickness	19-40mm	19-40mm	19mm	22mm	14-20mm	19-24mm	14-27mm	22mm	19-40mm
PB Thread Required	M5	M5	M6	M6	M5	M5	NA	M6	M5
Ledge	Yes	Yes	Yes	Yes	Yes	Yes	NA	Yes	Yes

push button lux latches and slam latches

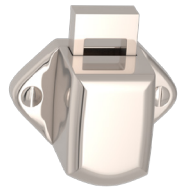
Solid brass, with brass stop/keep.
Simple to fit, durable, quiet and reliable. Operates by pushing to release, automatically latches on closing.
Standard with ledge range.



Slam Latch
PSL0006



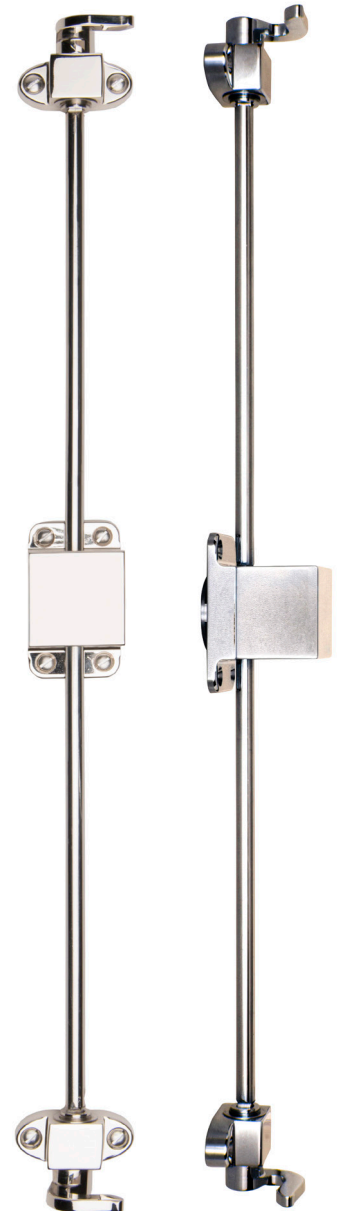
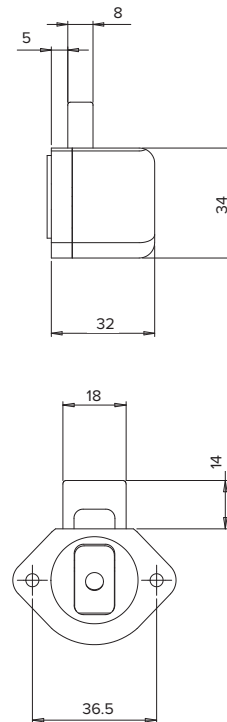
Push Button Lux Latch with
Extender PLK211
- Backset adjustable 15mm to 350mm



Push Button Lux Latch
PLK210



- Push Button Lux Latch comes with steel keep.

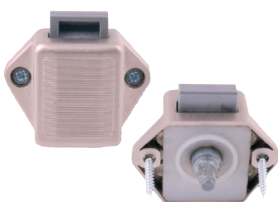


Lux Espagnolette
PLK212

For dimensions, finish options and technical information for the above lux latches, please see page 19.

- Applies to PLK210, PLK211 & PLK212.

standard latches and espagnolettes



Standard Push Button Lock
PSL004



Standard Push Button Lock
PSL018



Standard Espagnolette
PLK340



- All standard latches and espagnolettes come with steel keep.



Shown here – Mixed Recess Leather latching cabinet handles
(Stitch Out) in Chocolate Leather and Satin Nickel

latching handles

We are the first to develop the lux latch to find solutions within all our finish options. These handles are complimentary to our existing range, completing an overall project to maintain authenticity throughout. Simple, ingenious ways of keeping your cabinets shut, lift the leather handle to release the catch and pull open or push the button to open. Not just for yachts, they are a better way to keep cupboards shut, suitable for draws, wardrobes, working with push buttons espagnolettes. Shown here in Chest Leather and Bright Chrome.



Up to 54 finish combinations per design, visit [turnstyledesigns.com](https://www.turnstyledesigns.com) to view



Square Loop (stitched) **U1200**



Square Loop (plain) **UP1200**



Square Strap (stitched) **U1440**

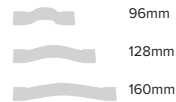


Square Strap (plain) **UP1440**

Sizes available (centres)

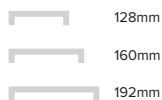


Sizes available (centres)



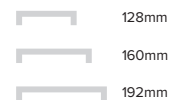
Square (stitched) **R7568**

Sizes available (centres)



Square (plain) **R6000**

Sizes available (centres)



Coffin leg Scroll (stitched) **R7570**
Coffin leg Scroll (plain) **R6500**

Sizes available (lengths)



Coffin leg Scroll **S7002**

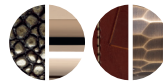
Sizes available (lengths)



solid and combination T bar handles

Elegantly waisted bodies with tapered grips in leather, brass or Amalfine™. Machined with an 8mm spindle to work on espagnolette systems to lock cupboards or doors. These T bar handles compliment the Tube door lever range well.

Shown here on 52mm round rose in Polished Nickel, Slate Grey leather with Polished Nickel and Alupewt with Polished Nickel.



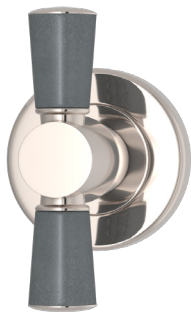
Up to 54 finish combinations per design, visit turnstyledesigns.com



Solid Tube **S1686**



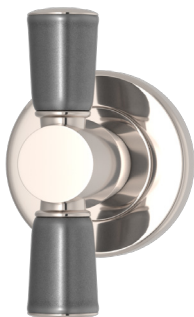
Solid Hammered Tube **HS1686**



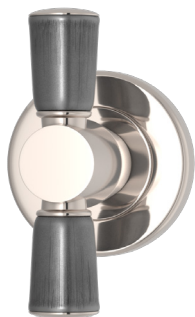
Combination Leather Tube (stitch in) **C1481**



Combination Leather Tube (stitch out) **C1290**



Combination Amalfine™ Tube **D1686**



Combination Amalfine™ Bamboo **D1291**



Combination Amalfine™ Faceted Tube **D1811**



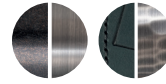
Combination Amalfine™ Shagreen Tube **D2584**

solid and recess T bar handles

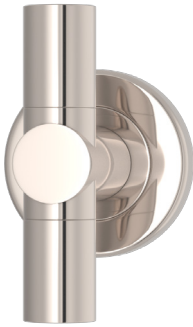
Solid brass, hammered brass or Amalfine™ grips on a simple barrel base.

Also available in a smaller cabinet handle option to match.

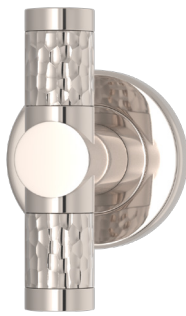
Shown here on 52mm round rose in Polished Nickel, Slate Grey leather with Polished Nickel and Alupewt with Polished Nickel.



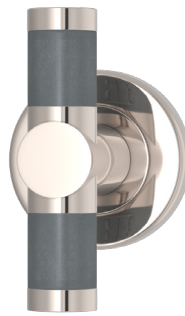
Up to 54 finish combinations per design, visit turnstyledesigns.com



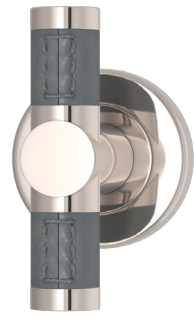
Solid Barrel **S2017**



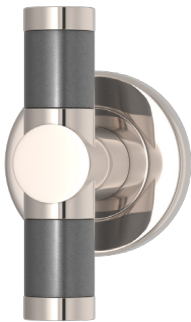
Solid Hammered Barrel **HS2017**



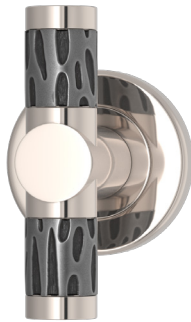
Recess Leather Barrel (stitch in) **R1913**



Recess Leather Barrel (stitch out) **R1911**



Recess Amalfine™ Barrel **P2017**



Recess Amalfine™ Rough Cut **P2359**



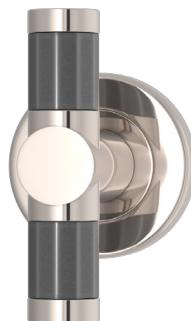
Recess Amalfine™ Shagreen **P1912**



Recess Amalfine™ Wire **P2361**



Recess Amalfine™ Woven **P2230**



Recess Amalfine™ Faceted **P3408**



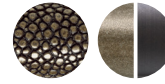
Shown here – Labyrinth collection in Silver Bronze with Polished Nickel

cabinet T-bar handles

These miniature T-bar handles coordinate perfectly with our D handles and other cabinet hardware. Available as turning (to operate latches or espagnolettes) or fixed dead with a 5mm spindle.

Made with solid brass, Amalfine™ or hand stitched leather grips.

Shown here in Alupewt, Slate Grey Leather and Bright Chrome.



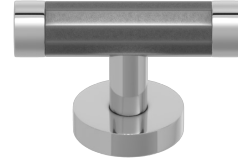
Up to 45 finish combinations per design, visit turnstyledesigns.com to view



Bamboo Ø15mm
Turning: P1012
Fixed: P1012FD



Rough Cut Ø15mm
Turning: P1013
Fixed: P1013FD



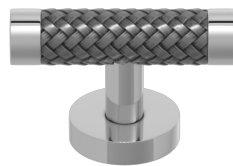
Faceted Ø15mm
Turning: P3022
Fixed: P3022FD



Shagreen Ø15mm
Turning: P3016
Fixed: P3016FD



Wire Ø15mm
Turning: P3036
Fixed: P3036FD



Woven Ø15mm
Turning: P3030
Fixed: P3030FD



Labyrinth Ø15mm
Turning: B9222
Fixed: B9222FD



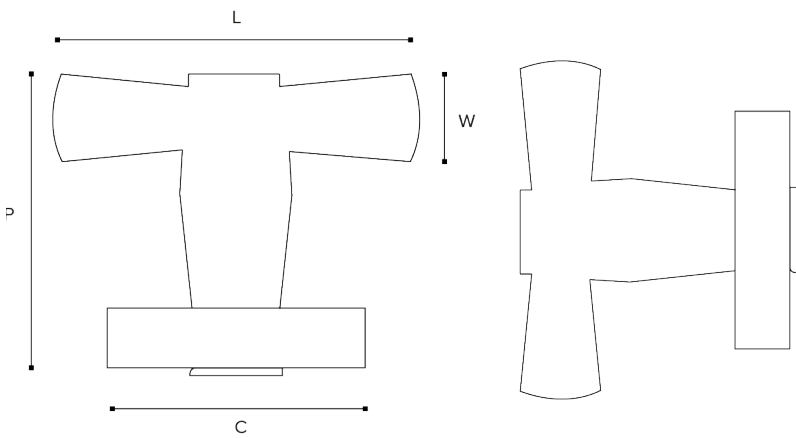
Barrel (stitch out) Ø15mm
Turning: R1026
Fixed: R1026FD



Barrel (stitch in) Ø15mm
Turning: R1027
Fixed: R1027FD

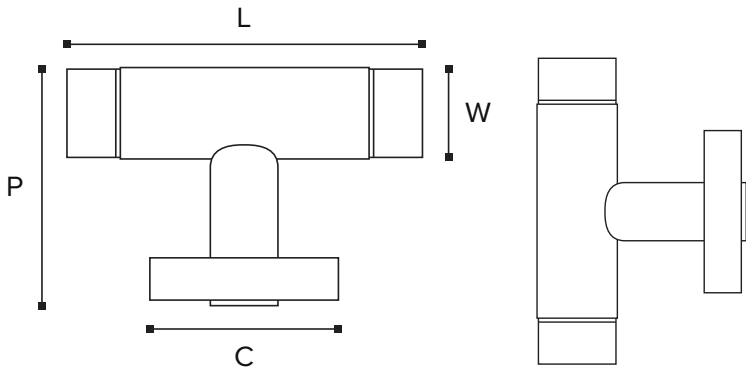


Solid Barrel T-bar Ø15mm
Turning: S1003 Fixed: S1003FD



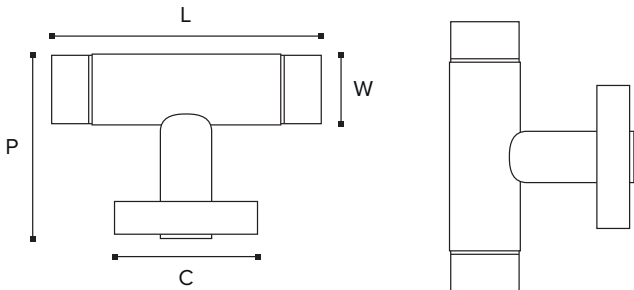
Tube Door T Bars - Page 20

	C	L	P	W
S1686	52	84	65	20
HS1686	52	84	65	20
C1481	52	84	65	20
C1290	52	84	65	20
D2584	52	84	65	20
D1811	52	84	65	20
D1686	52	84	65	20
D1291	52	84	65	20



Barrel Door T Bars - Page 21

	C	L	P	W
S2017	52	82	65	19
HS2017	52	82	65	19
R1913	52	82	65	19
R1911	52	82	65	19
P2017	52	82	65	19
P2359	52	82	65	19
P1912	52	82	65	19
P2361	52	82	65	19
P2230	52	82	65	19
P3408	52	82	65	19
B8254	52	82	65	19

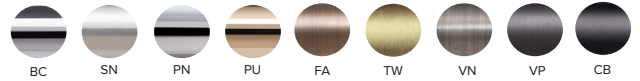


Cabinet T Bars - Page 23

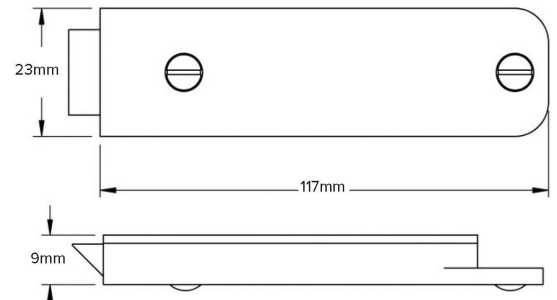
	C	L	P	W
P1012	-	55	38	15
P1013	-	55	38	15
P3022	-	55	38	15
P3016	-	55	38	15
P3036	-	55	38	15
P3030	-	55	38	15
B9222	-	55	38	15
R1026	-	55	38	15
R1027	-	55	38	15
S1003	-	55	38	15

turning lux slam latches

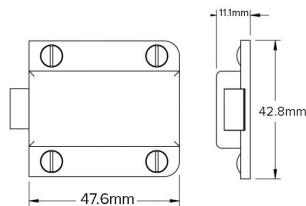
Metal Finishes



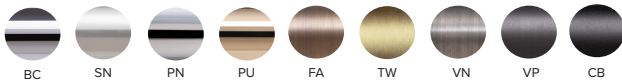
Lux Rebate Slam Latch
PLK0216



Lux Rim Slam Latch
PLK0215



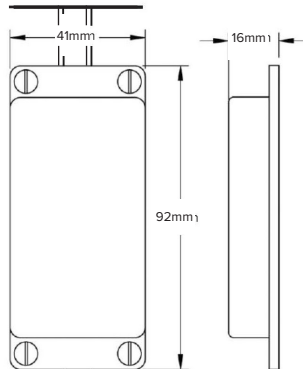
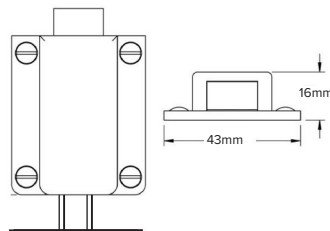
Metal Finishes



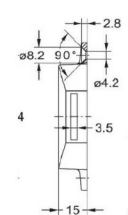
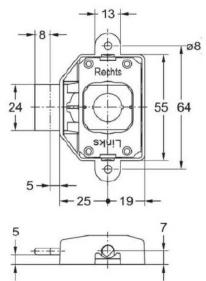
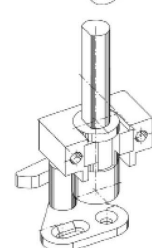
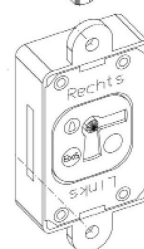
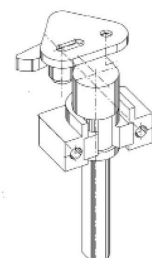
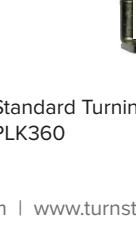
turning espagnolettes



MATT NICKEL
ONLY

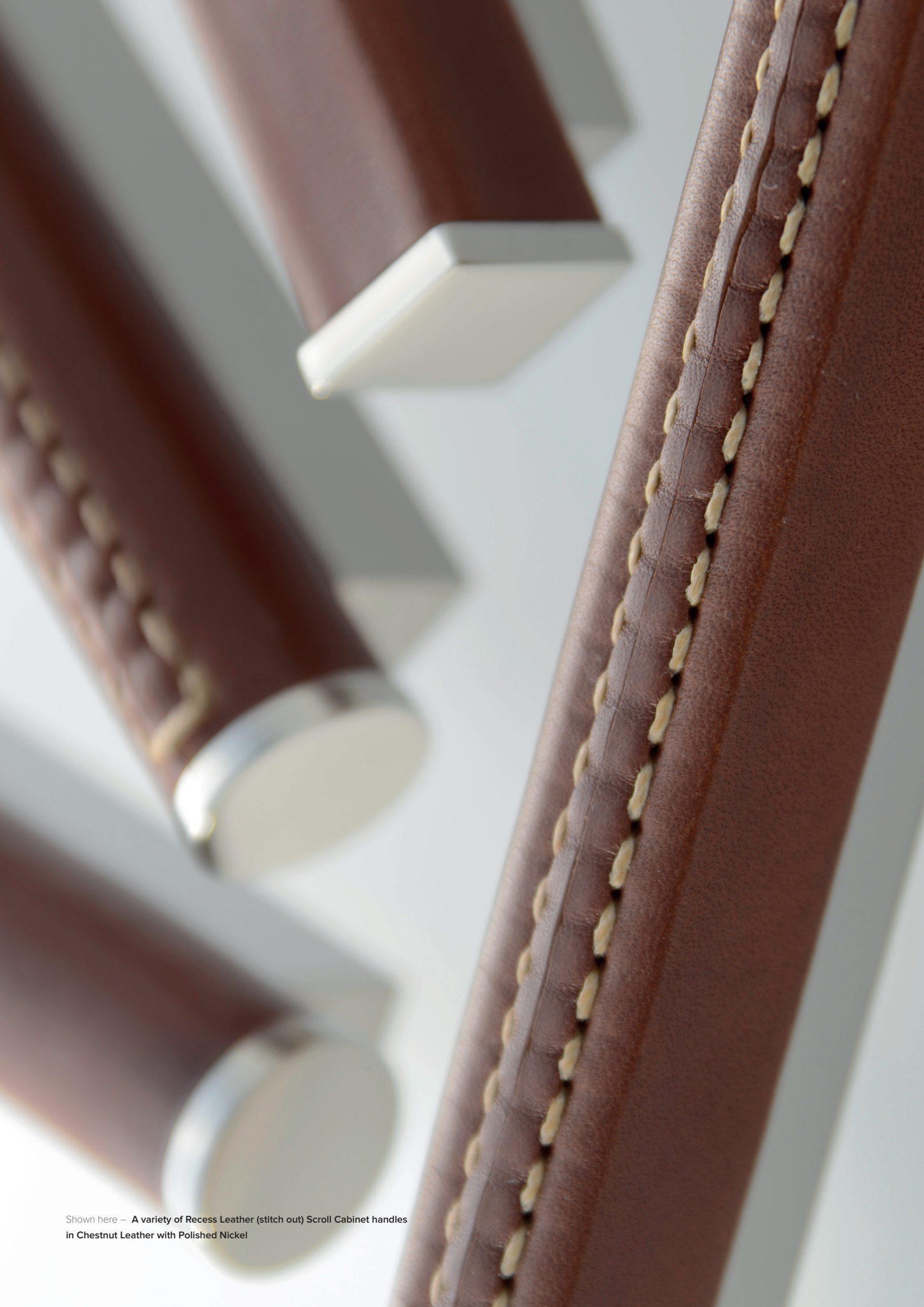


Turning Lux Slam Espagnolette
PLK232



- With 6mm profile rods.

Standard Turning Espagnolette
PLK360



Shown here – **A variety of Recess Leather (stitch out) Scroll Cabinet handles**
in Chestnut Leather with Polished Nickel

Leather manufacturing

Our leather is sourced from some of the finest tanneries in the world in Tuscany, Italy. We use only the very best full grained (top and strongest section), vegetable tanned (all natural), drum dyed, bridle or saddle leather.

Leather like all natural materials will change with age, according to the situation, exposure to sunlight and usage or lack of. The more you use it, the better it looks, the oils from your hands feed the leather and create a unique patina. Like an old handbag or briefcase the character of the leather gets richer with age.

Colour Variation

Vegetable tanning is an art rather than a science, please allow for some variations in colour from batch to batch and even from hide to hide in some cases. This is all part of the charm of using such a beautiful and natural material.

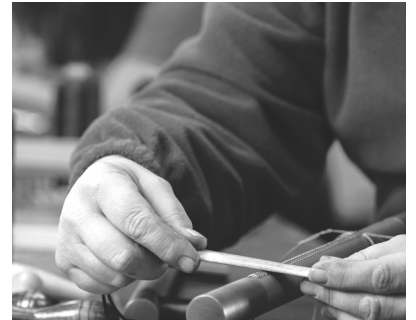
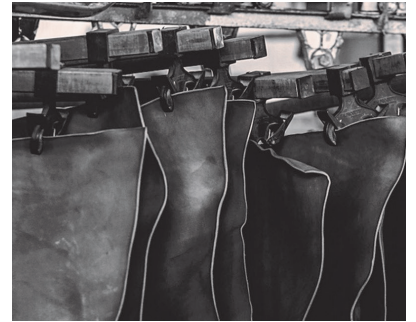
Wear and Care

As with a good handbag or pair of shoes the leather will appreciate being fed from time to time, we recommend twice a year with a good quality leather cream, or we can supply a recommended cream if you wish.

Do not clean with solvents or chemicals, as this will not only affect the leather but also soak through and destroy the glue. Scratches and dents can be removed by a simple “boning” process that brings the oils back to the surface and repairs by simply working the leather area in circular motions with a boning tool (or the back of a spoon).

If the leather gets dirty use a small amount of soapy water, let it dry and finish with a natural wax. Try and remove dust if the handles are not being used, as dust dries out the leather.

With a small amount of care your handles will last for years and years to come.



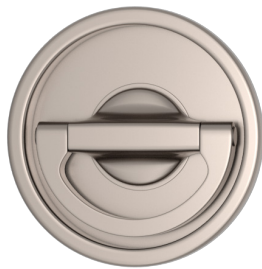
flush hardware and locks

Our flush fitted handles range has been growing every year, by popular demand and is now available in all sorts of shapes and sizes. Machined from solid brass with hidden fixings and available with our faux leather inlays to prevent scratching and marking.

Shown here in a Raven Black Faux Leather with Satin Nickel



Up to 54 finish combinations per design, visit turnstyledesigns.com



Round revolving flush pull **S1954**



Round revolving flush pull **C1954**



Rectangle flush pull
S1955 turn



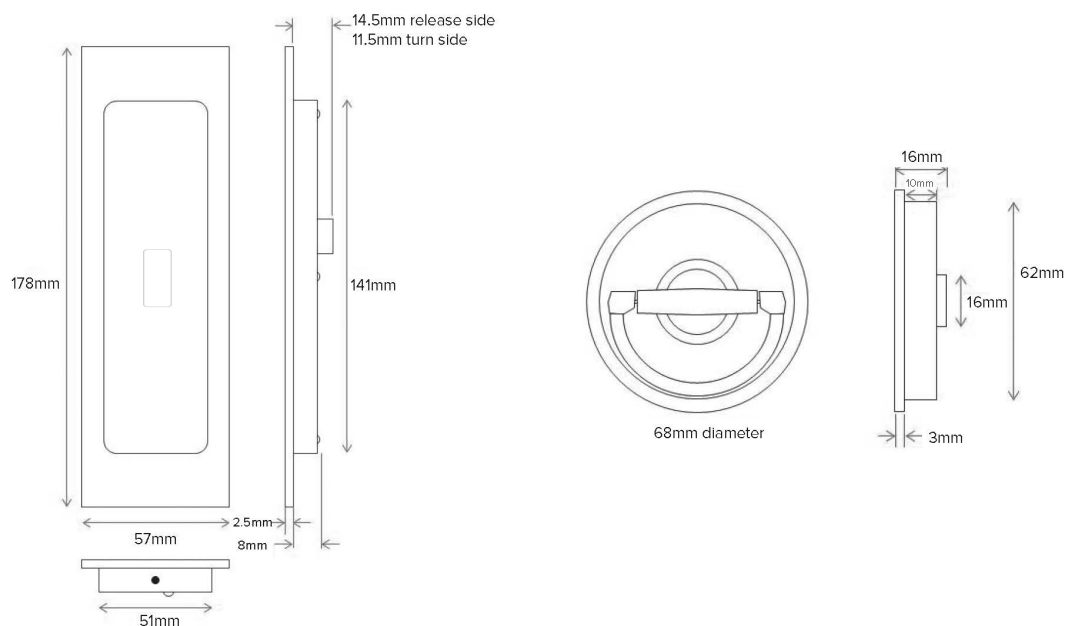
Rectangle flush pull
S1955 coin release



Rectangle flush pull
R1955 turn

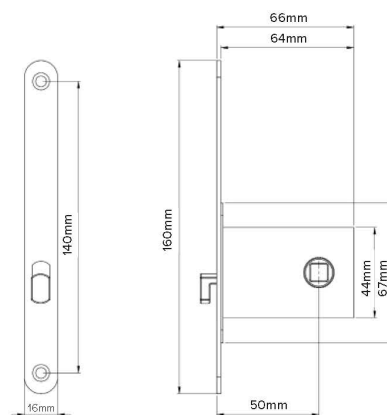
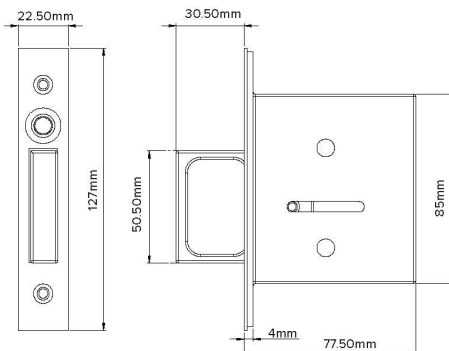
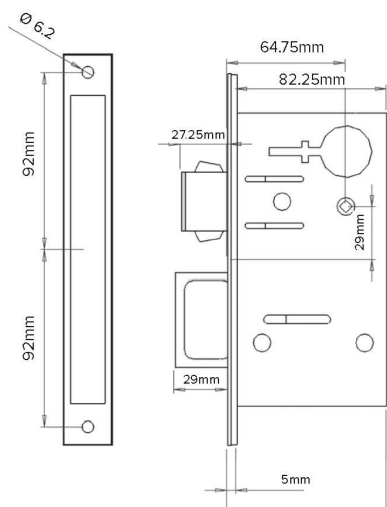


Rectangle flush pull
R1955 coin release



	L	P	W
S1955 - Turn	178	3	57
S1955 - Release	178	3	57
R1955 - Turn	178	3	57
R1955 - Release	178	3	57

	L	P	W
S1954	70	3	70
C1954	70	3	70



Push button sliding door lock and pull **K2692**

- Available in all brass finishes.
Please see page 4 and 5 for all finish information.

Push button sliding door pull **K2693**

- Available in all brass finishes.
Please see page 4 and 5 for all finish information.

Sliding door privacy lock **K1500**





Design Your Handle

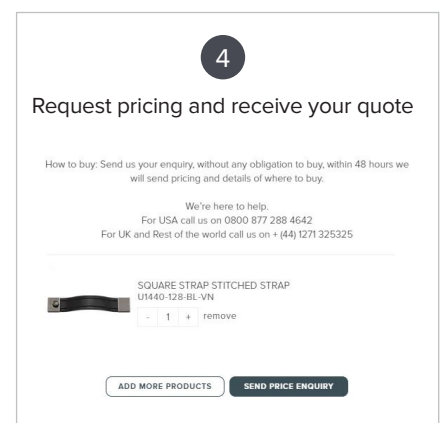
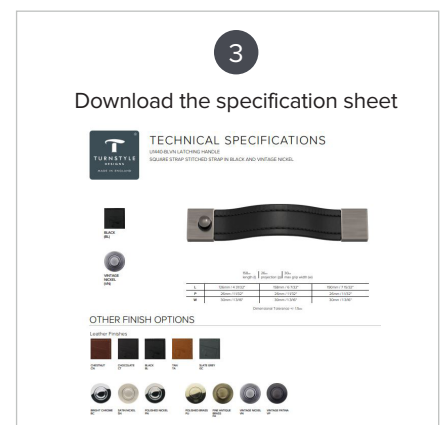
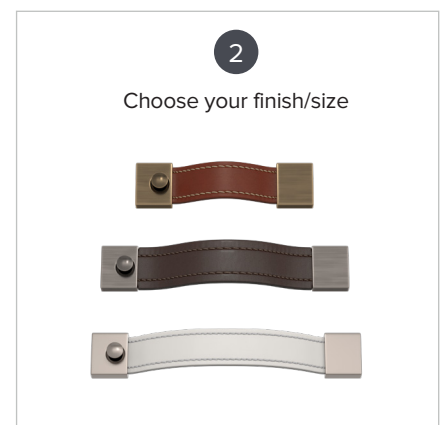
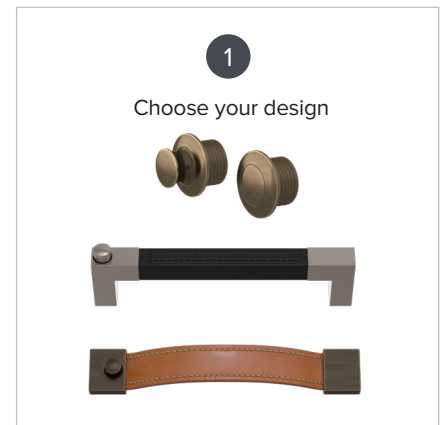
Select and filter your design, finishes or sizes using our website tool.

We are proud to have one of the most progressive websites in our industry, with a simple to use configuration tool which allows you to view every one of our designs in every combination of grip and body, leather, Amalfine™ and brass.

Choose your design, finish and size, download the specification sheet and then request your pricing. Our sales team will then send you a quote and tell you how to buy.

You can also keep up to date on our latest news, developments, events and dealerships, as well as read our blog where you will find interesting posts about what we are up to as a business and team.

www.turnstyledesigns.com





customisation

Modify

We offer modification and customisation options for clients by using existing stock components.

A cost effective way to enable a client to have a unique, bespoke design by using some of Turnstyles' stocked components and modifying material, grips or finish and thereby benefiting from both price and delivery times.

There are several ways of achieving this... here are the main areas:

Custom Leather

Clients can free issue their leather to apply to an existing design or modify our stitch colour or style.

Custom Grip

Create your own grip for any of our hardware, and choose your own materials and lengths.

Custom Metal

Alongside our standard metals we have a range of custom finish options including Rose Gold, Vintage Copper and Silver Plate.



Tailored

If you are not able to find something to suit your project in either of our catalogue ranges or via the Modify process we will be happy to discuss developing and manufacturing your vision from start to finish. We have the capabilities and

know-how to manufacture most types of door hardware, however complex, and have been the manufacturer of choice for some of the most prestigious and demanding clients in the world, including a number of Superyacht builders.

We understand the demands put on door and cabinet hardware and will ensure that your design not only looks a million dollars but it is also built to last and function smoothly.

In the first instance please contact our custom design department at our head office and ask for Alex Foster on + 44 (0)1271 325 325 or email alex@turnstyledesigns.com. Alex will discuss the project, designs and suitability (to develop time scales and budget indications) from prototyping to full delivery.

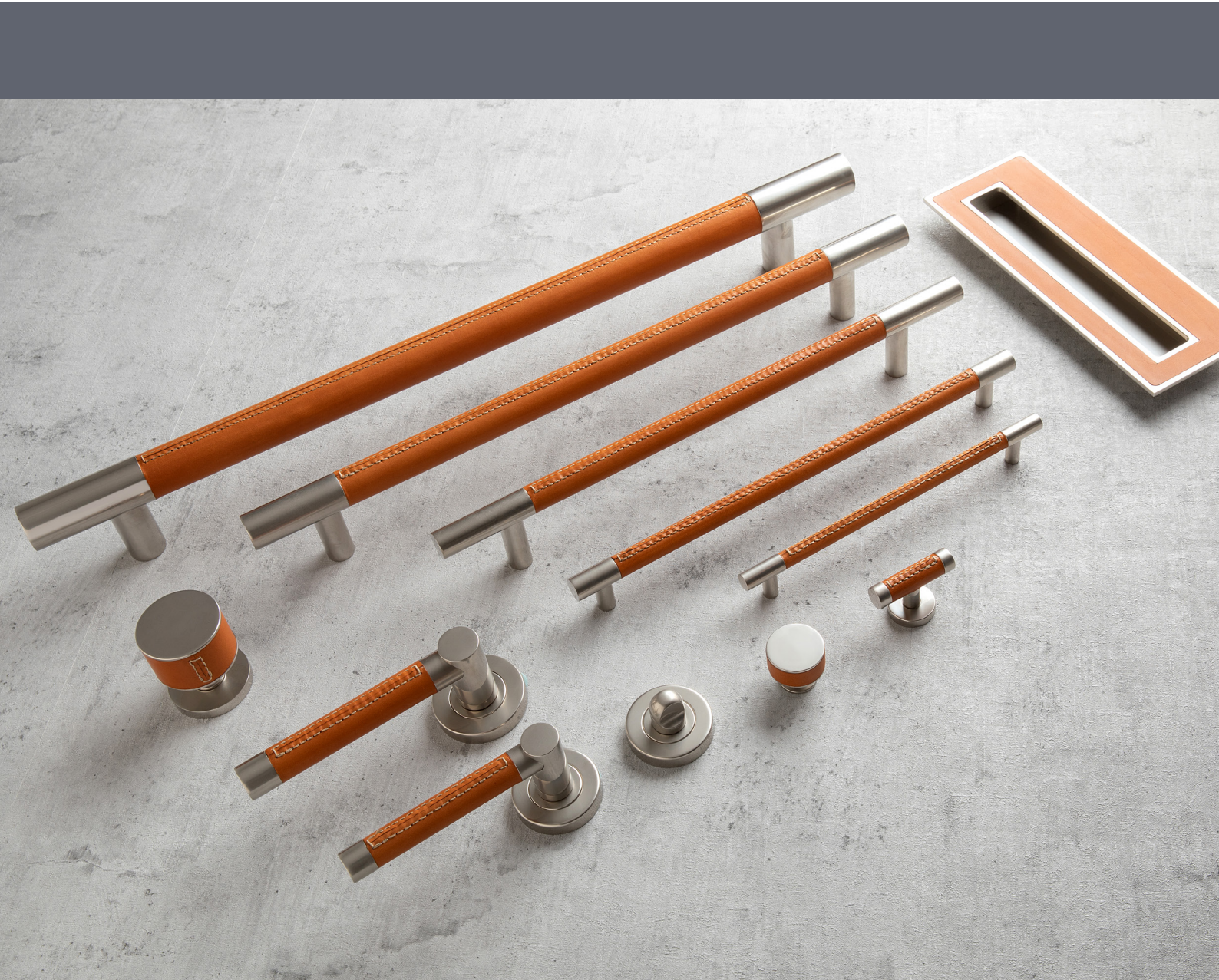
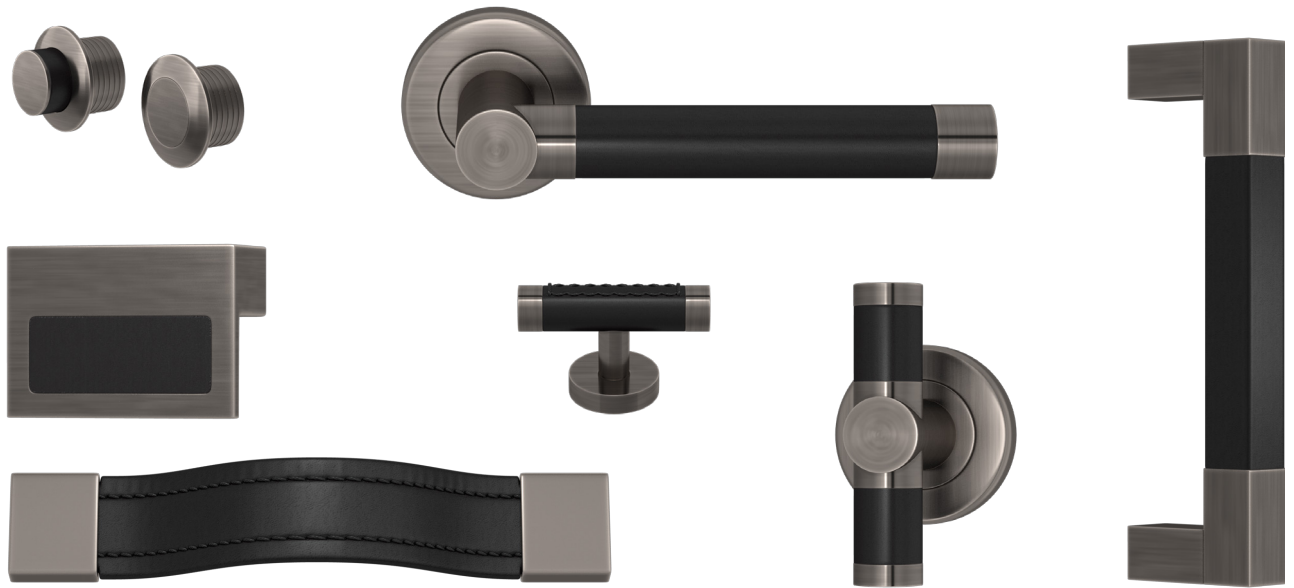




collections | complete the look

The majority of our designs are fully suited to co-ordinate across entire project specifications.

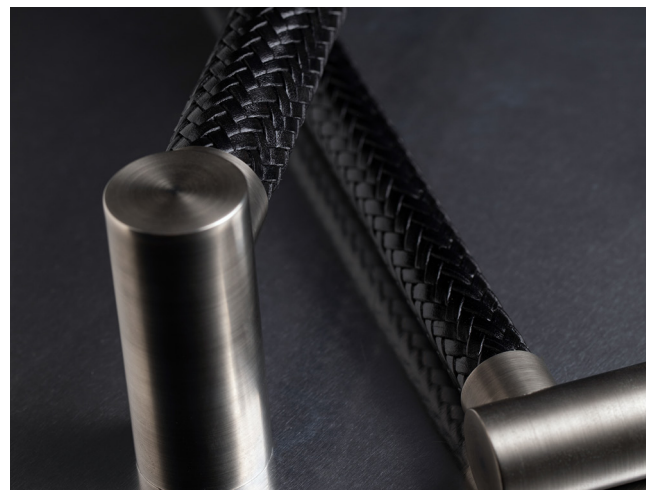
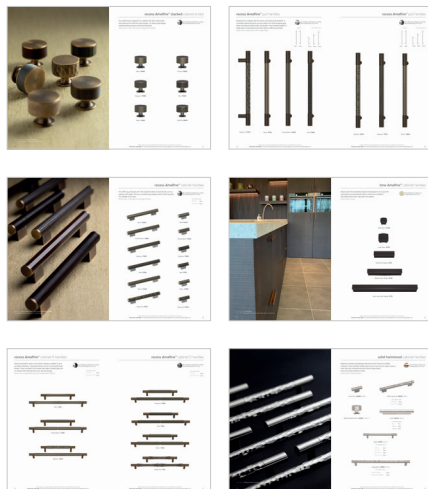
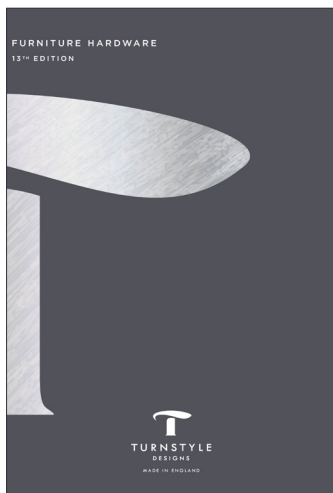
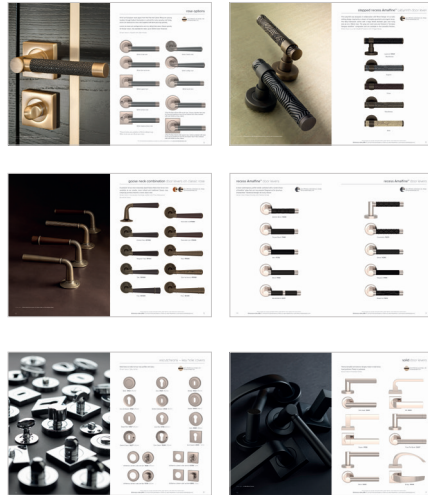
From start to finish you can mix and match your chosen designs to fit any project.





door and furniture hardware brochures

For a complete look to any interior, make sure you take a look at our Door and Furniture Hardware Brochures. Where you will find many more of our products and collections to suit any design style.





TURNSTYLE
DESIGNS

MADE IN ENGLAND



Turnstyle Designs Ltd, Baron Way, Roundswell Business Park, Devon, EX31 3TB
+44(0) 1271 325 325 | +1 877 288 4642 www.turnstyledesigns.com