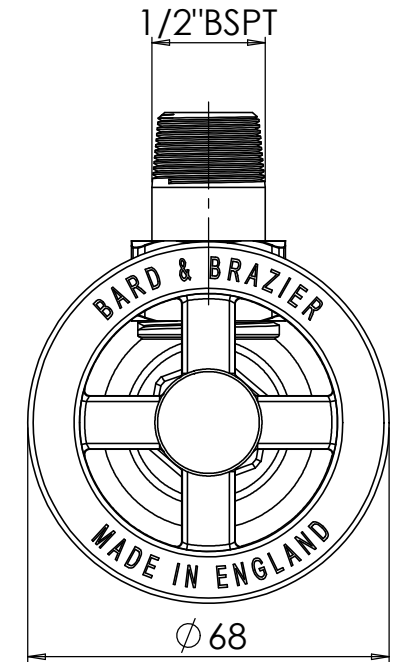
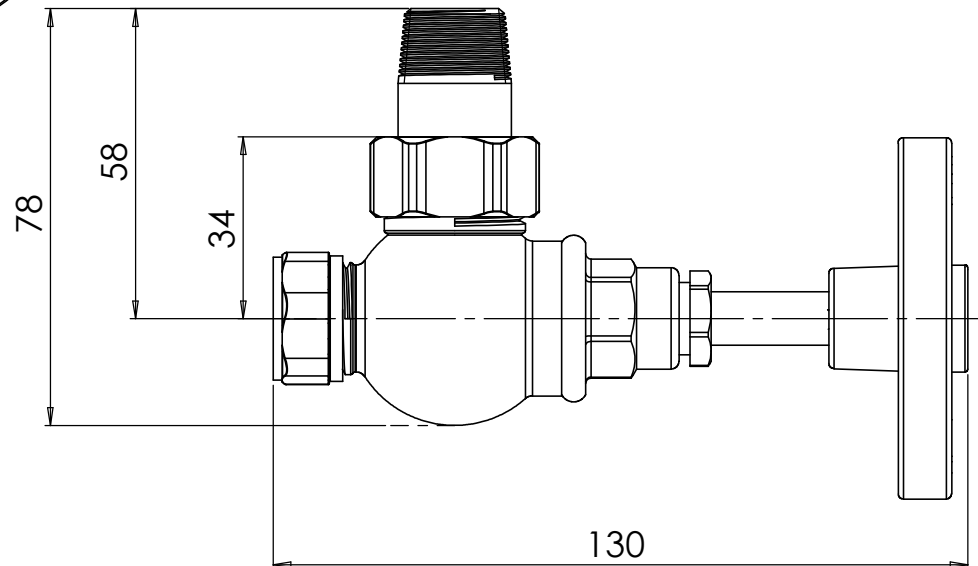
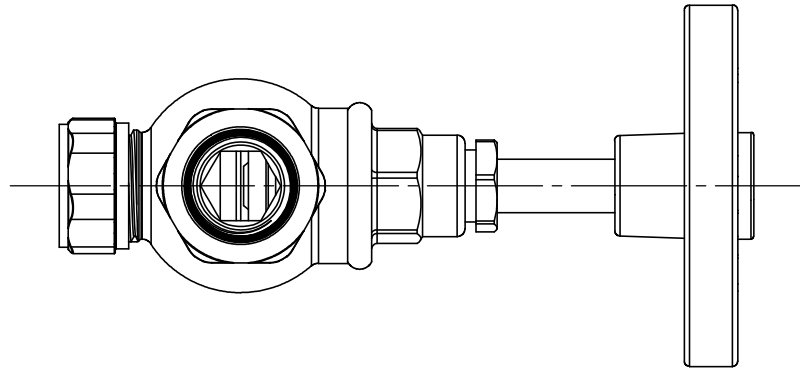
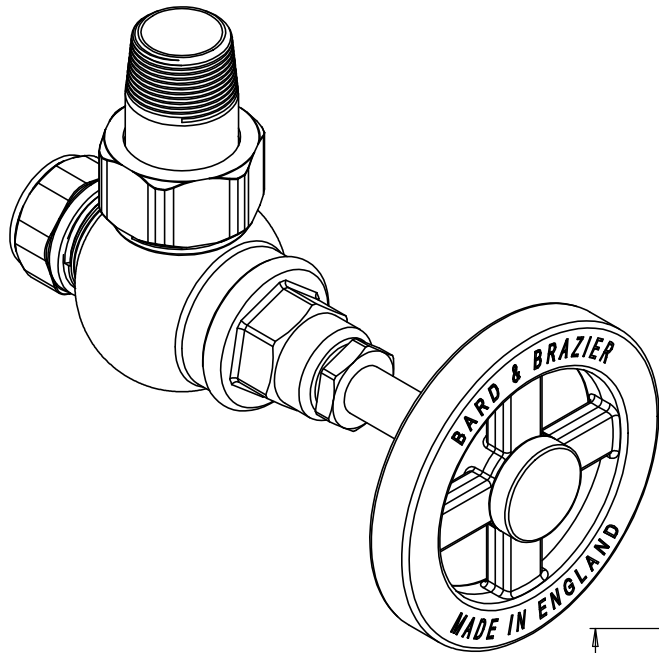


REVISION HISTORY


| REV | DESCRIPTION | DATE | INITIALS |
|-----|-------------|------|----------|
| | | | |



DO NOT SCALE DRAWING

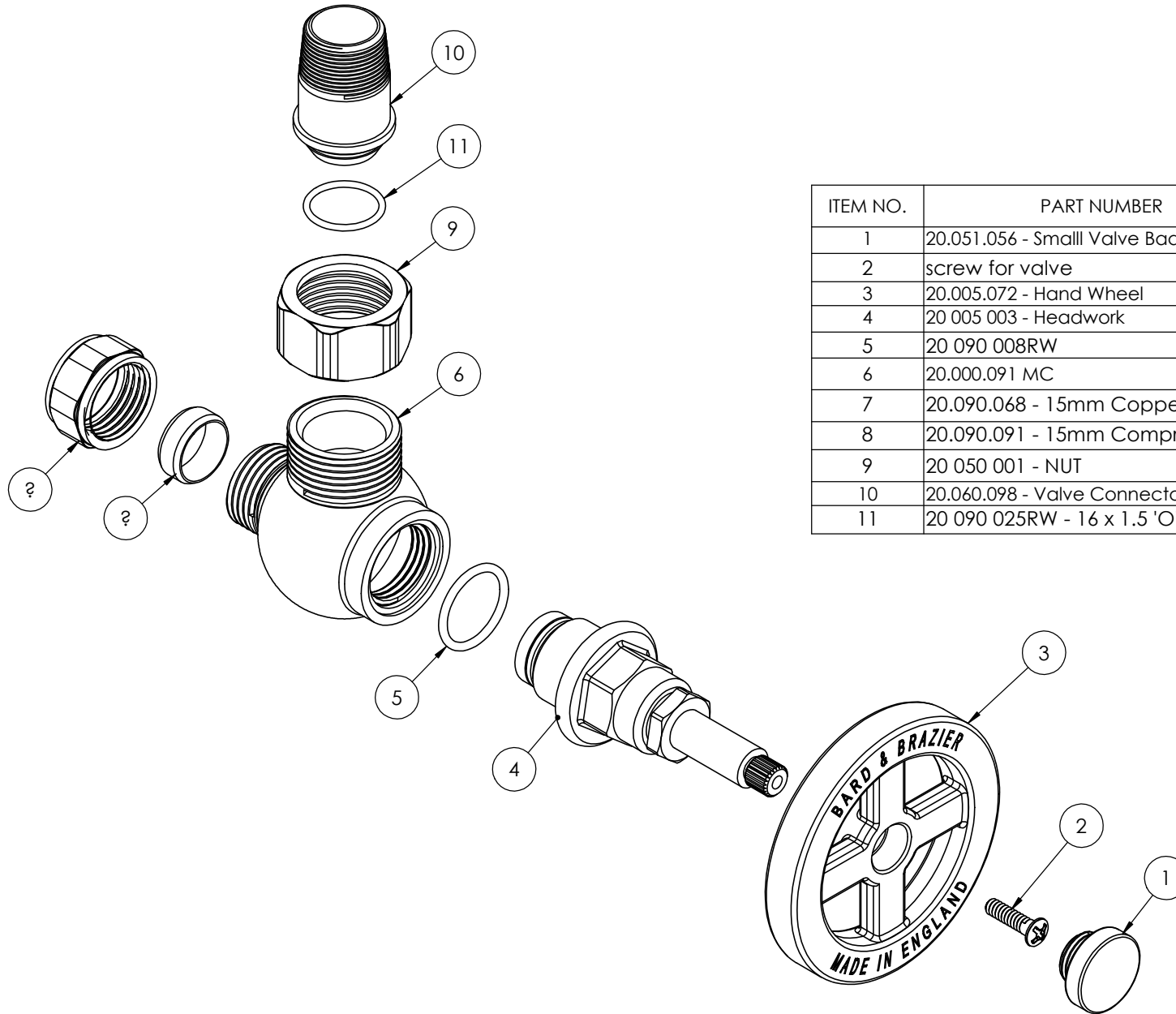
DEBUR AND BREAK SHARP EDGES

UNLESS OTHERWISE SPECIFIED: DIMENSIONS ARE IN MILLIMETERS. TOLERANCES: LINEAR: ±0.2

| | | | |
|--|------------------|---------------|-----------|
| TITLE: Pullman Valve Assembly | | | |
| SCALE: A3 | DATE: 07/05/2013 | DRAWN BY: MDW | |
|  BARD & BRAZIER | MATERIAL: | FINISH: | |
| | DWG NO.: | SHEET: | REVISION: |

REVISION HISTORY

| REV | DESCRIPTION | DATE | INITIALS |
|-----|-------------|------|----------|
| | | | |



| ITEM NO. | PART NUMBER | DESCRIPTION | Default/ QTY. |
|----------|-----------------------------------|----------------------|---------------|
| 1 | 20.051.056 - Small Valve Badge | Valve Badge | 1 |
| 2 | screw for valve | | 1 |
| 3 | 20.005.072 - Hand Wheel | HAND WHEEL | 1 |
| 4 | 20 005 003 - Headwork | Exposed Headwork | 1 |
| 5 | 20 090 008RW | 'O' RING ID18 x Ø2.0 | 1 |
| 6 | 20.000.091 MC | VALVE BODY | 1 |
| 7 | 20.090.068 - 15mm Copper Olive | | 1 |
| 8 | 20.090.091 - 15mm Compression Nut | | 1 |
| 9 | 20 050 001 - NUT | 3/4" Nut | 1 |
| 10 | 20.060.098 - Valve Connector | Valve Connector | 1 |
| 11 | 20 090 025RW - 16 x 1.5 'O' Ring | 'O' RING | 1 |

| | | | |
|-------------------------------|------------------|---------------|----------|
| TITLE: Pullman Valve Assembly | | | |
| SCALE: A3 | DATE: 07/05/2013 | DRAWN BY: MDW | |
| MATERIAL: | | FINISH: | |
| DWG NO.: | | SHEET | REVISION |

DO NOT SCALE DRAWING

DEBUR AND BREAK SHARP EDGES

UNLESS OTHERWISE SPECIFIED: DIMENSIONS ARE IN MILLIMETERS. TOLERANCES: LINEAR: ±0.2

