



# YEOMAN RAINGUARD

RAINWATER SYSTEMS

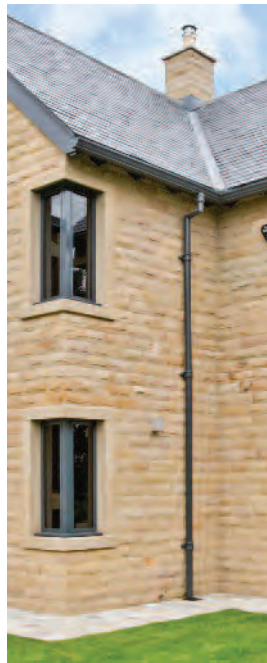
ALUMINIUM | GRP | CAST IRON | COPPER | ZINC | STAINLESS STEEL



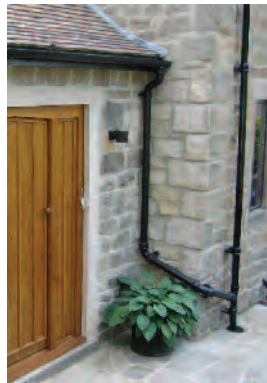
Celebrating over 50 years of making business a pleasure



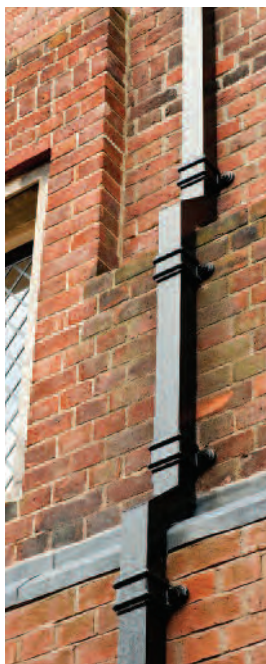
# MODERN



# TRADITIONAL



# HERITAGE





# WELCOME



## YEOMAN RAINGUARD RAINWATER SYSTEMS

Yeoman Rainguard has been providing quality Rainwater Systems for over 50 years.

We pride ourselves on the quality of workmanship, products and attention to detail, which are underpinned by our many years experience in this area.

Our expertise is freely available and we are happy to discuss any project in detail from initial concepts for new developments to full surveys for existing projects or refurbishments. Our ability to best fit our products to the project means we can tailor specifications to suit both client and budget requirements.

Over the years we have supplied our products to many different types of projects ranging from listed buildings, churches and civic properties to new build housing developments, self build and commercial/retail projects.

Our reputation has been built on delivering quality products and offering a friendly, helpful and above all, personal service.

Our number one priority is you - the customer. We hope to prove that "We make business a pleasure."

### ALUMINIUM

Introduction	6-7
XL Gutters and Pipes	8-11
Standard Pipes	12-13
Cast Gutters and Hoppers	14-15
Fixing Instructions	16-17

ALUMINIUM

### GRP

Introduction	18-19
Gutters	20-21
Pipes	22-23
Lead Effect Pipes	24-25
Hoppers	26-29
Fixing Instructions	30-31

GRP

### CAST IRON

Introduction	32-33
Gutters	34-35
Pipes	36-37
TX Soil Pipes	38-39
Hoppers	40-41
Fixing Instructions	42-43

CAST IRON

### COPPER, ZINC & STAINLESS STEEL

Introduction	44-45
Gutters	46-47
Pipes	48-49
Hoppers and Accessories	50-51
Fixing Instructions	52-53

COPPER, ZINC & STAINLESS STEEL

### OTHER RAINGUARD PRODUCTS

Health and Safety - FAQs	54-55
Cornice & Fascia	56-61
Anticlimb	62-63
Testimonials	64-65
Colour Finishes for Gutters & Pipes	66-67

OTHER RAINGUARD PRODUCTS

## SERVICE & SOLUTIONS

We take great pride at Yeoman Rainguard in being able to offer a comprehensive service, before, during and after the supply and fitting of our specialist products.

We will endeavour to meet and exceed the expectations for your project regardless of size, budget or location.

Whether you are an architect, local authority, building contractor, homeowner or self builder, our unique professional services are available free of charge and without obligation.

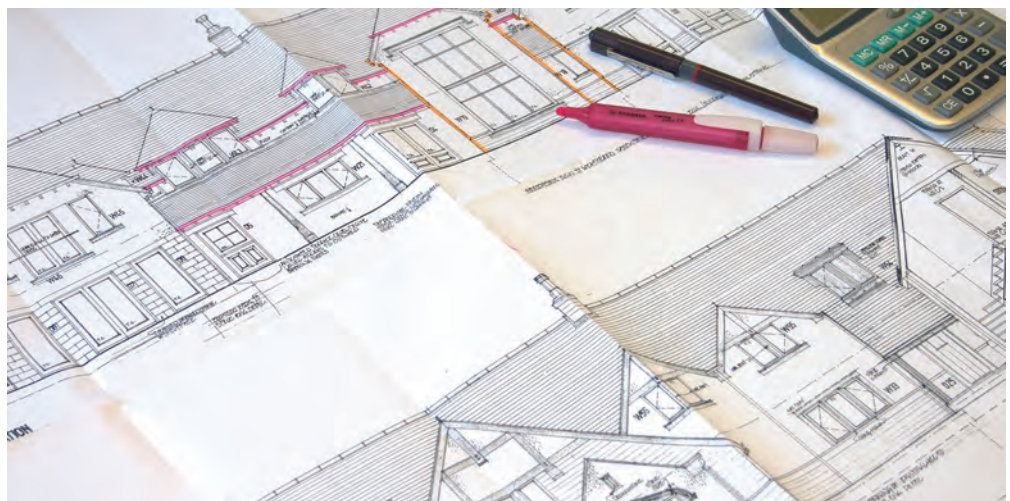


## DESIGN

Our experienced team are able to offer expert advice on specifications in addition to providing product samples, where required, for client consideration and approval.

We can assist in liaison with local planning authorities and also advise on conservation issues.

If the project is at an early stage then we can help with system design and specification, take quantities from project drawings and provide fully itemised quotations.



## ONSITE

For renovation or new build projects which are already onsite, we can arrange full site surveys, itemised quotations and provide accurate advice on technical issues including material selection e.g. Aluminium, GRP, Cast Iron, Copper, Zinc and Stainless Steel and help with rainwater calculations and sizing.

As a manufacturer we are able to produce special (non stock) items to suit specific site requirements and also include the replication of existing period design patterns.

## MANUFACTURE

Once your exact requirements have been agreed, Yeoman Rainguard products are made at our head office manufacturing facilities in Leeds.

We use only the finest raw materials, latest state of the art technology and most important of all, our own directly employed skilled craftsmen.





## DESPATCH

Orders are despatched using our own fleet of delivery vehicles or by overnight carrier. All products are securely packaged for safe transit and site storage.



## AFTER SALES

Most of our products are maintenance free, however once your project is complete we are able to offer guidance on suitable methods of cleaning.

Should the unforeseen happen and any item is damaged, then we can supply replacements quickly.

## INSTALLATION

A welcome addition to our services is onsite installation by one of our nationwide network of approved installation specialists, each having a proven track record with Yeoman Rainguard products.

All are available to work confidently with main contractors and end users alike.

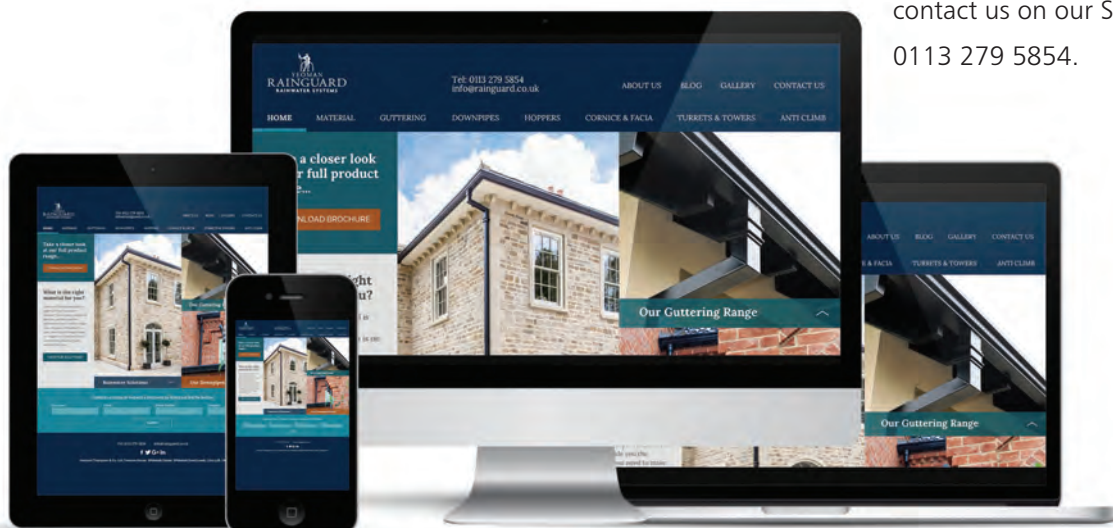
If, however, you choose to fit one of our systems yourself or decide to use a subcontractor, we will provide full installation instructions. Our sales department can offer advice on any aspect of installation.

## EXPORT SERVICE

With a worldwide distribution network, our export department will be happy to discuss any particular requirement you may have.

## SALES HELPLINE

If you would like details on any of our products please contact us on our Sales Helpline: 0113 279 5854.





# ALUMINIUM Rainwater Systems

Yeoman Rainguard Aluminium Rainwater Systems are suitable for all types of buildings but particularly desirable for new build, extension or refurbishment projects where a traditional feel is required.

Providing an attractive and resilient system with a long reaching lifecycle, reducing maintenance and replacement requirements, Aluminium is also an ecologically green and recyclable product.

The XL Aluminium range with its joint fix technology is a great product for quick and easy installation on site.

The full range of Aluminium systems are available in a choice of profiles, sizes and colours - from the Yeoman Rainguard Vision Range - making them the perfect finishing touch to your project.







The XL Aluminium range, complete with Cast Aluminium Rainwater Hoppers, were fitted to a new build development complementing perfectly the stone exterior. The XL joint technology offered a huge advantage in speed and ease of installation on site when fitting to multiple units.



The conversion of a hospital, over 100 years old, into luxury flats was sympathetically carried out. The addition of XL Aluminium downpipes and MOG gutters in Basalt Grey helped to keep the building's heritage look.



Gutters & downpipes from the XL Aluminium range emulated the high quality finish of a unique residence on a grand scale.



# XL ALUMINIUM Gutters

## Composition Design & Manufacture

Yeoman Rainguard XL Aluminium Gutters are extruded profiles using aluminium alloy to EN AW-6063 T6 BS 12020 - 2:2001

Gutters are designed to be fixed direct to fascia board (with the exception of half round), thus removing the need for fascia brackets. However, fascia brackets together with rafter brackets and rise and fall brackets are available if required. Gutter lengths are pre punched at 500mm centres to aid installation.

Gutters are joined using an internal joint clip which does not require any mechanical fixings.

Silicone joint sealant is used to create a long lasting water tight seal.

## Shape & Dimensions

Profiles are as detailed and are supplied in standard 3.0m and 2.0m lengths.

## Standard Accessories

Running outlets, stop end outlets (handed), 90° external and internal angles, 135° external and internal angles, stop ends (handed), joint clips, fascia brackets, rise and fall brackets, rafter brackets, stainless steel fixing screws, silicone joint sealants, epoxy resins.

## Optional Accessories

Non-standard angles, special gutter configurations (made to order), special brackets.

## Colours & Finishes

All gutters and accessories are pre finished in black textured polyester powder coating to give years of maintenance free service. Our Vision colour range, including white, is also readily available to order at a small premium (see colour and finishes on pages 66 - 67). Products can also be supplied in standard mill finish.

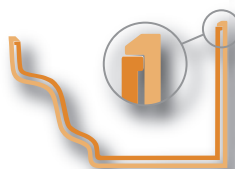
## Maintenance

Yeoman Rainguard XL Aluminium gutters require no maintenance other than periodical cleaning out.

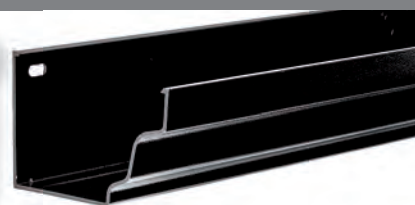
## Availability

Please contact our Sales Office on 0113 279 5854 for accurate delivery.

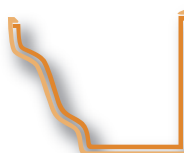
### XL MOG



Size (mm): 150 x 100



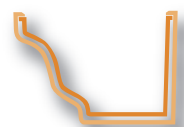
### XL MOG



Size (mm): 125 x 100



### XL MOG



Size (mm): 100 x 75



### XL COG



Size (mm): 125 x 65



### XL Deep Flow Half Round (DFHR)



Size (mm): 130 x 100



### XL Half Round



Size (mm): 125 x 55



### XL BOX



Size (mm): 150 x 100



XL Aluminium DFHR Gutter



# XL Aluminium Gutter Accessories

(Available in all profiles)

Running Outlet



Stop End Outlet



Available left or right hand

90° External Angle



90° Internal Angle



135° External Angle



135° Internal Angle



Left Hand Stop End



Right Hand Stop End



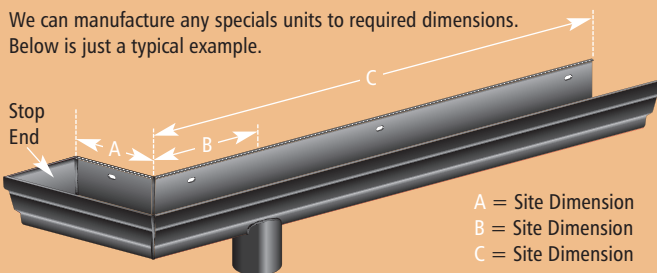
Joint Clip



Fascia Bracket



We can manufacture any specials units to required dimensions. Below is just a typical example.



Drive-in Rise and Fall Bracket



Stainless Steel Fixing Screw



Silicone Joint Sealant



Adjustable Rafter Bracket



Epoxy Resin



XL Aluminium DFHR Gutter



# XL ALUMINIUM Pipes

## Composition Design & Manufacture

Yeoman Rainguard XL Aluminium Pipes are extruded profiles using aluminium alloy to EN AW-6063 T5 T6 BS EN 12020 – 2:2001. Pipe collars are die cast.

## Shape & Dimensions

Pipes are as detailed and are supplied in standard 3.0m, 2.0m and 1.0m lengths

All lengths come complete with an eared socket (unless otherwise required).

## Standard Accessories

1 part top offsets, 2 part top offsets, plinth offsets, side offsets, branches, bends, shoes, square to round connectors, loose sockets with spigot, loose clips, rainwater diverters, timber frame brackets, drainage bases, drainage grates, drainage covers, stainless steel fixing screws, cover caps, wire balloons, bobbins.

## Optional Accessories

Access plates, passovers, rodding eyes, decorative ears, special configurations.

## Colours & Finishes

All pipes and accessories are pre finished in black textured polyester powder coating to give years of maintenance free service. Our vision colour range is readily available to order at a small premium (see colour & finishes on page 66-67) products can also be supplied in standard mill finish.

## Maintenance

Yeoman Rainguard XL Aluminium Pipes require no maintenance other than periodic cleaning.

## Availability

Please contact our sales office 0113 279 5854 for accurate delivery



### Round

Size (mm): 75 Dia. 100 Dia



### Square

Size (mm): 75 x 75



### Rectangular

Size (mm): 100 x 75





# XL Aluminium Pipe Accessories

All components available in round (as illustrated), square and rectangular. Special sizes are readily available.

1 Part Top Offset 102°\*

Projection to order.



2 Part Top Offset 102°\*

For projections 150mm to 600mm.



Plinth Offset 135°\*

Projection to order.



Side Offset 102°\*

Projection to order. Available left or right hand.



Branch 112°

Available left or right hand Front - Back.



Side Bend 112°

Available left or right hand Front - Back.



Shoe

Also available left or right hand.



Square to Round Connector

100mm Dia standard. Other Dia available.



Loose Socket With Spigot



Loose Clip Straight Through



Rainwater Diverter Kit



75mm Dia. 75 x 75mm Square only.



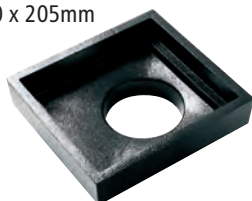
Timber Frame Bracket



Not available in 100mm Dia

Drainage Base

190 x 205mm



Drainage Grate

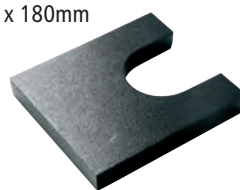
165 x 180mm



Not available in 100mm Dia

Drainage Cover

165 x 180mm



Not available in 100mm Dia



Stainless Steel Fixing Screw and Cap



64, 90 & 127mm available

Wire Balloon



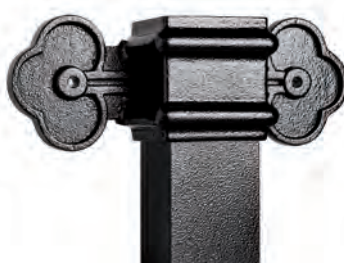
Bobbin



25mm Projection

Decorative Ears

Cloverleaf



Ornamental



Fleur-De-Lys





# STANDARD ALUMINIUM Pipes

## Composition Design & Manufacture

Extruded sections using aluminium alloy to EN AW-6063 T5 T6 BS EN 12020 – 2:2001. Pipe collars are diecast.

## Shape & Dimensions

Supplied in standard 3.0m, 2.0m and 1.0m lengths, all complete with socket.

## Standard Accessories

1 part top offsets, 2 part top offsets, plinth offsets, side offsets, branches, bends, shoes, square to round connectors, loose sockets with spigot, loose clips, stainless steel fixing screws, cover caps, wire balloons, bobbins.

## Optional Accessories

Special bends and offsets, access plates and rodding eyes to customers requirements.

## Colours & Finishes

All pipes are finished in black textured polyester powder coating to give years of maintenance free service. Textured white and lead grey are also available at a small premium. Other BS5252 (inc BS4800) or RAL colours are available in smooth finish, however, if quantity allows, these can also be obtained in textured finish. A small premium is applicable for special colours.

## Maintenance

Yeoman Rainguard Standard Aluminium Pipes require no maintenance other than periodical cleaning out.

## Availability

Please contact our sales office 0113 279 5854 for accurate delivery



### Round

Size (mm): 65 Dia, 75 Dia, 100 Dia



### Square

Size (mm): 75 x 75, 100 x 100



### Rectangular

Size (mm): 100 x 75





# Standard Aluminium Pipe Accessories

All components available in square (as illustrated), round and rectangular. Special sizes are readily available.

1 Part Top Offset 102°\*



Projection to order.

2 Part Top Offset 102°\*



For projections 150mm to 600mm. Available left or right.

Plinth Offset 135°\*



Projection to order.

Side Offset 102°\*



Projection to order.

Branch 112°



Available left or right hand Front - Back.

Side Bend 112°



Available left or right hand Front - Back.

Shoe



Also available left or right hand.

Square to Round Connector



100mm Dia standard. Other Dia available.

Loose Socket With Spigot





# CAST ALUMINIUM Gutters & Hoppers

## Composition Design & Manufacture

Yeoman Rainguard Cast Aluminium Gutters are gravity fed die castings using LM 27 Alloy.

## Shape & Dimensions

The gutters are supplied in standard 1.8m lengths.

## Standard Accessories

Running outlets (round or square drop), 90° internal and external angles, 135° internal and external angles, union clips, stop ends (handed), fascia brackets, rise and fall brackets (if required), stainless steel fixing screws, silicone joint sealants, epoxy resins.

## Optional Accessories

Non-standard angles made to order.

## Colours & Finishes

All gutters, pipes and accessories are finished in black textured polyester powder coating to give years of maintenance free service. Textured white and lead grey are also available at a small premium. Other BS5252 (inc BS4800) or RAL colours are available in smooth finish, however, if quantity allows, these can also be obtained in textured finish. A small premium is applicable for special colours.

## Maintenance

Yeoman Rainguard Cast Aluminium Gutters & Hoppers require no maintenance other than periodical cleaning out.



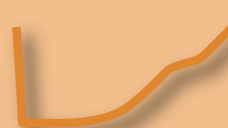
No 46 Moulded

Size (mm)  
100, 125, 150



Ogee

Size (mm)  
100, 112, 125



Plain Half Round

Size (mm)  
100, 112, 125, 150



## Cast Aluminium Gutter Accessories

Running Outlet



90° External Angle



90° Internal Angle



135° External Angle



135° Internal Angle



Union Clip



Left and Right Stop Ends



Fascia Bracket



Other bracket  
styles available.



# Cast Aluminium Hoppers

Plain



Width	255mm
Projection	180mm
Height	170mm

Motif



Width	380mm
Projection	185mm
Height	180mm

Bellvue



Width	285mm
Projection	205mm
Height	250mm

Swinton



Width	305mm
Projection	162mm
Height	162mm

York



Width	385mm
Projection	205mm
Height	275mm

Hallam



Width	400mm
Projection	160mm
Height	175mm

Cheltenham



Width	445mm
Projection	150mm
Height	205mm

Pontefract



Width	445mm
Projection	205mm
Height	345mm

Trent



Width	355mm
Projection	235mm
Height	325mm

Castleford Small



Width	254mm
Projection	152mm
Height	305mm

Castleford



Width	363mm
Projection	203mm
Height	410mm

Rotherham



Width	355mm
Projection	225mm
Height	355mm

Kingston



Width	305mm
Projection	203mm
Height	510mm



Bowden



Width	475mm
Projection	210mm
Height	525mm

Stockford



Width	625mm
Projection	280mm
Height	340mm

Cheshire



Width	620mm
Projection	245mm
Height	430mm



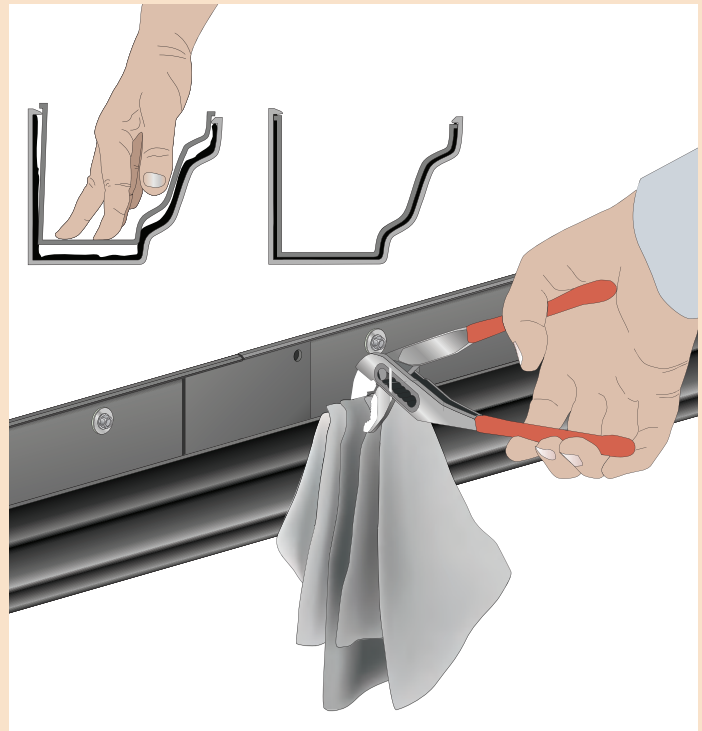
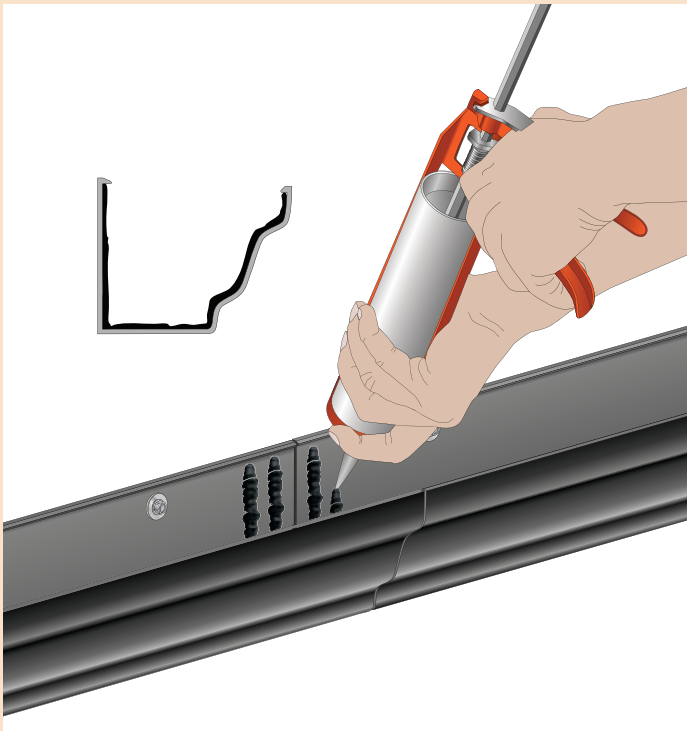
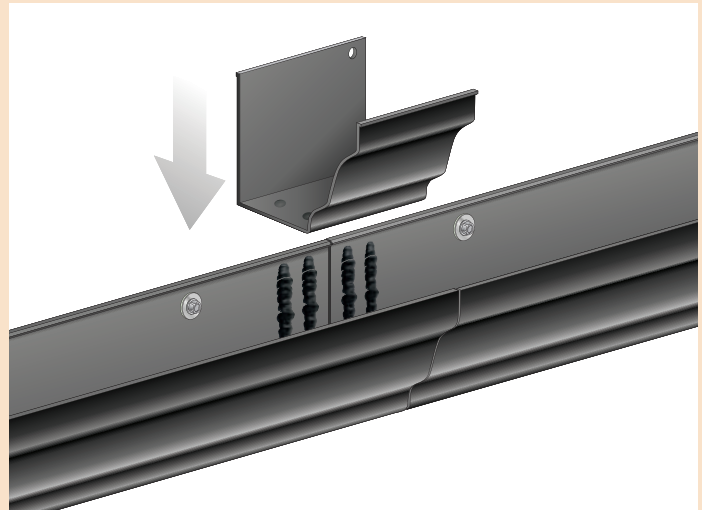
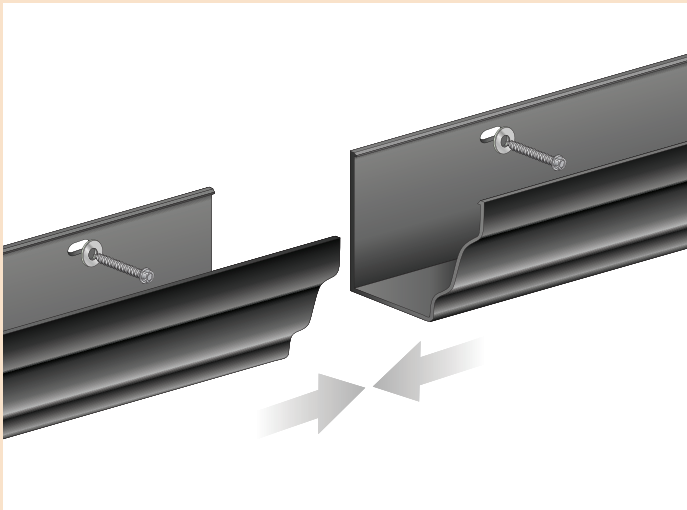


# ALUMINIUM

## Fixing Instructions

### XL Aluminium Gutters

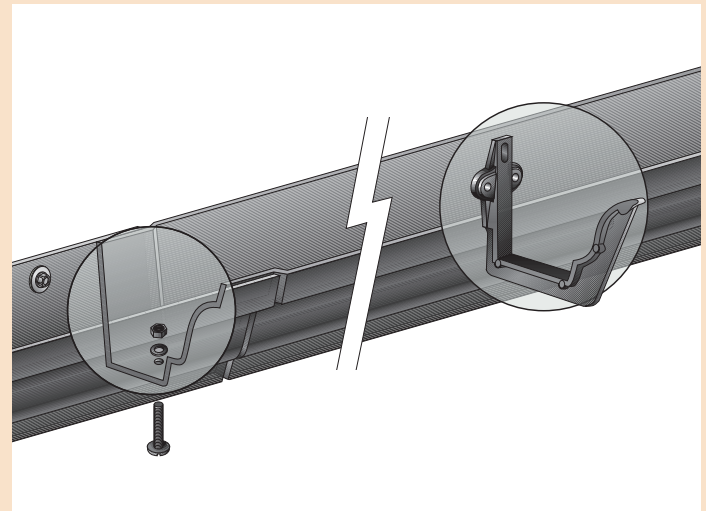
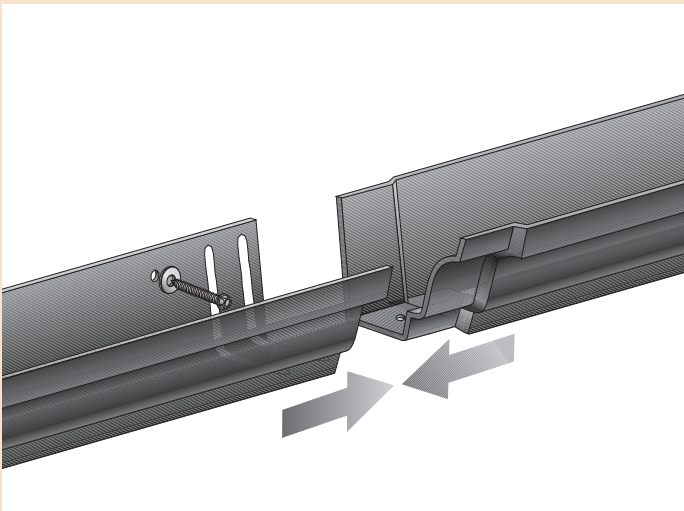
1. Place Gutter in position, fixing to fascia board at 500mm centres through oversize hole to allow for expansion and contraction using 32mm stainless steel screws and oversize washer.
2. Allow 2mm expansion gap between lengths and components.
3. Ensure all joint areas are clean, dry, dust and grease free prior to applying silicone sealant.
4. Apply two generous beads of silicone sealant to each side of the joint.
5. Place joint clip in position pressing down firmly until it snaps into position. Note: If roof tiles are in the way then the joint clip will need to be tilted slightly to manoeuvre into gutter.
6. Using a cloth to protect the finish, press the joints into place using bent pliers.
7. Re-apply additional silicone if required.
8. Gutter may be cut using a fine tooth hacksaw or power saw with aluminium blade. Ensure any burr is removed with a file.
9. Ensure any cut ends are coated using the touch up paint provided.
10. Brackets may be used if required. Brackets must be used with the 125 x 55mm XL half round gutter. Brackets should be fixed at 900mm centres however this should be reduced if snow load is a concern.





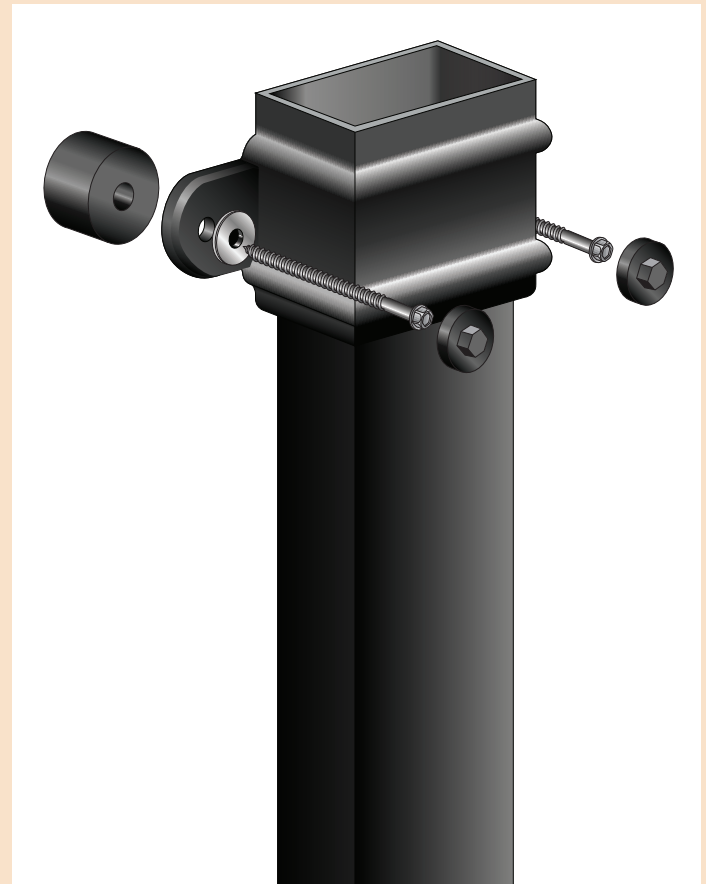
## Cast Aluminium Gutters

1. Fix gutter brackets at 900mm centres to give correct line and level. Use appropriate length stainless steel screw.
2. Ensure all joint areas are clean, dry, dust and grease free prior to applying silicone sealant.
3. Apply two generous beads of silicone sealant to joint and around bolt hole.
4. Insert 25 x 5mm stainless fixing bolts from the underside of the gutter. Do not over tighten.
5. Remove any surplus sealant from faces of gutter.
6. Fix gutter to fascia board at 600mm centres through oversize hole to allow for expansion and contraction using 32mm stainless steel screws and washer.
7. Gutter bolts may be touched up using touch up paint provided.
8. Gutter may be cut using a fine tooth hacksaw or power saw with aluminium blade. Ensure any burr is removed with a file.
9. Ensure any cut ends are coated using the touch up paint provided.



## XL & Standard Aluminium Pipes

1. Place rainwater pipe in correct position and mark wall through pre-drilled holes in ears of pipe.
2. Drill wall using appropriate masonry bit.
3. Use only stainless steel screws and place through washer provided.
4. Fix through pre-drilled pipe ears using appropriate length screws and plugs to obviate pull out.
5. When fixed securely, push on cover cap to conceal screw head.
6. Ensure pipes are plumb and offer up next pipe or component.
7. Fit in to socket leaving approx. 5mm gap for expansion and contraction.
8. Joints between sections can be pointed with silicone if required.
9. Bobbins are available to ensure a straight line to rainwater pipes where the building surface may be uneven.
10. Pipes may be cut to length using a fine tooth hacksaw or power saw with aluminium blade. Ensure any burr is removed with a file.





# GRP Rainwater Systems

Yeoman Rainguard GRP Rainwater Systems are a lightweight, durable product particularly suitable for the replacement of heavy cast iron or lead gutters & downpipes on traditional, older heritage and listed buildings.

Manufactured at Yeoman Rainguard's specialist workshop, the GRP range of products offers the option of bespoke gutters, pipes and rainwater hoppers for when exact replicas of original systems or innovative designs are required.

Being cost effective with a long lifecycle, GRP also lends itself to new build projects where that extra something is required for a unique finishing touch.







GRP to match XL Aluminium 130 x 100mm DFHR Gutter



A radius GRP gutter was the aesthetically pleasing yet functional solution for these two residences.



GRP 6040 MOG Gutter

GRP 100 x 75mm Standard Clip Pipe

GRP



The authentic appearance to this heritage house was maintained with a bespoke patterned GRP Gutter to match the original.



Bespoke GRP gutters were moulded with the rope decoration to be in keeping with the style of this old timber house.



# GRP Gutters

## Composition Design & Manufacture

Yeoman Rainguard GRP Gutters and fittings are glass fibre reinforced mouldings comprising glass fibre reinforcements in the form of laminations fully impregnated with Lloyds approved resins. Special formulations of laminate provide the desired strength and rigidity.

## Shape & Dimensions

The gutters are supplied in standard lengths of 1.8m plus spigot. Other sizes and sections are available to order.

## Standard Accessories

Running outlets (square or rectangular drop), 90° internal and external angles, stop ends (handed), union clips, fascia brackets, rise and fall brackets, rafter brackets, nylon gutter bolts, nuts and washers, silicone joint sealants.

## Optional Accessories

Non-standard angles or special gutter configurations made to order. Purpose made motifs to suit client requirements.

## Colours & Finishes

All gutters are through coloured. The standard finish is a reproduction cast iron surface in black. Our Vision range of colours is also available at a small premium (see pages 66 - 67). Other BS5252 (inc BS4800) or RAL colours are available.

## Gutter Brackets

Yeoman Rainguard gutter brackets are manufactured from mild steel flat bar, which is then spun galvanised prior to the application of a polyester powder coat finish. Where it is not possible to coat brackets in a matching colour to the gutter, then brackets are supplied galvanised for the customer to apply a suitable paint finish.

Some of our brackets are manufactured from aluminium.

Gutter brackets are produced in the following types; profiled fascia bracket, profiled rafter bracket, and profiled drive-in rise and fall brackets. Client's own design available to order.

Should the location of the project be subject to severe weather conditions i.e. coastal environment then we would recommend the use of 316 stainless steel with a polyester powder coat finish. Other surface treatments are available to order.

## Silicone Sealant & Gutter Bolts

The recommended silicone to be used for gutter sealing is a high modulus, reactive cure sealant conforming to ISO11600, available from Yeoman Rainguard.

Nylon gutter bolts, nuts and washers are available for fixing gutter lengths; these are available in black or natural (for special colours a touch up paint is available on request). Nylon bolts are coloured using a dyeing process and, as such, the colour will eventually bleach out when exposed to UV light.

## Maintenance

Yeoman Rainguard GRP requires no maintenance other than periodical cleaning out.

## Availability

GRP gutters are made to order; please contact our sales office for accurate delivery details.



PATTERN: 4030 M.O.G.  
Size (in mm): 100 x 75  
F.R.L.\*: 0.85 litres/sec



4635 M.O.G.  
120 x 90  
1.21 litres/sec



5040 M.O.G.  
125 x 100  
1.83 litres/sec



PATTERN: 6040 M.O.G.  
Size (in mm): 150 x 100  
F.R.L.\*: 2.28 litres/sec



7050 M.O.G.  
175 x 125  
4.16 litres/sec



7245 M.O.G.  
190 x 120  
4.22 litres/sec



PATTERN: 8460 M.O.G.  
Size (in mm): 250 x 150  
F.R.L.\*: 6.40 litres/sec



8860 M.O.G.  
220 x 150  
7.08 litres/sec



9070 M.O.G.  
225 x 175  
7.71 litres/sec



PATTERN: 9760 M.O.G.  
Size (in mm): 240 x 150  
F.R.L.\*: 9.06 litres/sec



9965 M.O.G.  
250 x 165  
10.53 litres/sec



12080 M.O.G.  
305 x 175  
12.88 litres/sec



PATTERN: 6030 M.O.G.  
Size (in mm): 155 x 80  
F.R.L.\*: 1.65 litres/sec



6435 M.O.G.  
160 x 90  
2.28 litres/sec



PATTERN: 4222 C.O.G.  
Size (in mm): 110 x 55  
F.R.L.\*: 0.56 litres/sec



5025 C.O.G.  
135 x 60  
0.75 litres/sec



6533 C.O.G.  
165 x 85  
1.73 litres/sec



PATTERN: 6545 C.O.G.  
Size (in mm): 165 x 110  
F.R.L.\*: 2.80 litres/sec



6045 B.W.G.  
150 x 130  
4.16 litres/sec



8560 B.W.G.  
220 x 145  
8.37 litres/sec



PATTERN: 6340 R.G.  
Size (in mm): 130 x 105  
F.R.L.\*: 1.88 litres/sec



4340 S.B.D.H.R.  
110 x 100  
1.50 litres/sec



PATTERN: 4515 H.R.  
Size (in mm): 110 x 40  
F.R.L.\*: 0.41 litres/sec



5018 H.R.  
125 x 50  
0.63 litres/sec



6030 H.R.  
150 x 75  
1.31 litres/sec



PATTERN: 5060 Box  
Size (in mm): 125 x 150  
F.R.L.\*: 4.65 litres/sec



6060 Box  
150 x 150  
5.85 litres/sec

\*F.R.L. =  
Flow Rate Levels



# GRP Gutter Accessories

Running Outlet



90° External Angle



90° Internal Angle



Non Standard External



Non Standard Internal



Left and Right Stop Ends



Union Clip



Profile Fascia Bracket



Drive-in Rise & Fall Bracket



Ajustable Rafter Bracket



Top fix also available.

Nylon Gutter Bolt, Nut & Washer



Silicone Joint Sealant



## Radius Gutters

The beauty with GRP is the flexibility with shape and form. Yeoman Rainguard is able to make radius gutter in any profile and any radius, both internal and external. These can also match our aluminium profiles, we would usually supply these in 0.9m lengths.

Templates are required from the client and then moulds can be manufactured to ensure accuracy of the radius.

## Special Profile

Our range is continually expanding. For example, where a special gutter profile is required, we are able to match existing items by either moulding from an original or producing a hand made pattern and mould from the client's own design.

Our technical staff are able to visit site to discuss special applications, offer advice on design and carry out a full survey where required.

Please contact our sales office for further details.





# GRP Pipes

## Composition Design & Manufacture

Yeoman Rainwater GRP Pipes, fittings and clips are glass fibre reinforced mouldings comprising glass fibre reinforcements in the form of laminations fully impregnated with Lloyds approved resins. Special formulations of laminate provide the desired strength and rigidity.

## Shape & Dimensions

The pipes are supplied in standard length of 1.8m, 0.9m as required, all complete with socket. Standard pipes are shown opposite. Other sizes and sections are available to order.

## Standard Accessories

1 part offsets, plinth offsets, side offsets, branches, bends, shoes, square to round connectors, loose sockets with spigot, loose clips.

## Optional Accessories

Special bends, passovers and offsets, access plates and rodding eyes to customer requirements.

## Colours & Finishes

All gutters are through coloured. The standard finish is a reproduction cast iron surface in black. Our Vision range of colours is also available at a small premium (see pages 66 - 67). Other BS5252 (inc BS4800) or RAL colours are available.

## Silicone Sealant

The recommended silicone to be used for pipe sealing where required is a high modulus, reactive cure sealant conforming to ISO11600, available from Yeoman Rainguard.

Fixing screws and cover caps are available in black as standard and also a limited colour range. However we are able to provide touch up paint where special colours occur.

## Maintenance

Yeoman Rainguard GRP requires no maintenance other than periodical cleaning.

## Availability

GRP pipes are made to order; please contact our sales office for accurate delivery details.

### Standard

Size (mm): 65 x 65  
75 x 50  
75 x 75  
90 x 90  
100 x 75  
110 x 110  
125 x 100  
150 x 100  
150 x 150



### Circular Standard

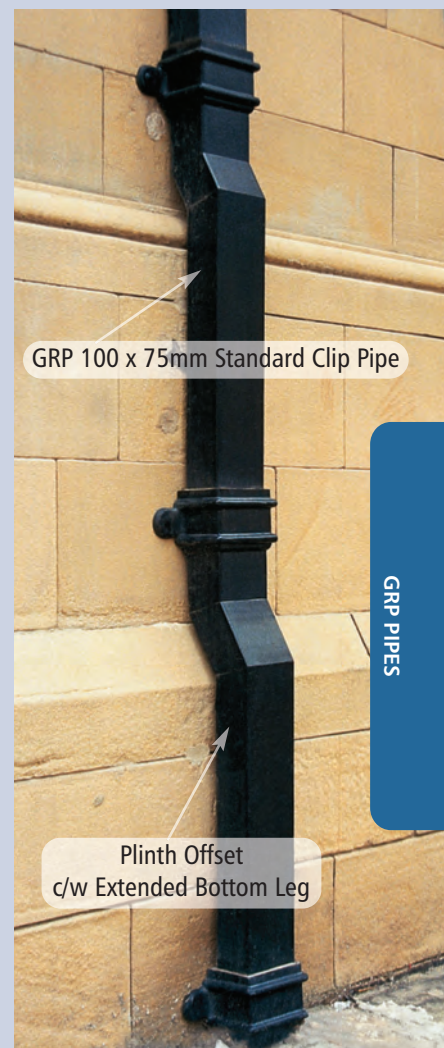
Size (mm): 65 Dia  
75 Dia  
100 Dia



GRP 100 x 75mm  
Standard Clip Pipe







## GRP Pipe Accessories

All components available in Standard (as illustrated) and Circular Standard. Special sizes are readily available.





# GRP Lead Effect

## Composition Design & Manufacture

Yeoman Rainwater GRP lead effect Pipes, fittings and clips are glass fibre reinforced mouldings comprising glass fibre reinforcements in the form of laminations fully impregnated with Lloyds approved resins. Special formulations of laminate provide the desired strength and rigidity.

## Shape & Dimensions

The pipes are supplied in standard length of 1.8m, 0.9m as required, all complete with socket. Standard pipes are shown opposite. Other sizes and sections are available to order to replicate original lead pipes on site.

## Standard Accessories

1 part offsets, plinth offsets, side offsets, branches, bends, shoes, square to round connectors, loose sockets with spigot, loose clips.

## Optional Accessories

Special bends, passovers and offsets, access plates and rodding eyes to customer requirements.

## Silicone Sealant

The recommended silicone to be used for pipe sealing where required is a high modulus, reactive cure sealant conforming to ISO11600, available from Yeoman Rainguard.

Fixing screws and cover caps are available in black as standard and also a limited colour range. However we are able to provide touch up paint where special colours occur.

## Maintenance

Yeoman Rainguard GRP requires no maintenance other than periodical cleaning.

## Availability

GRP lead effect products are made to order; please contact our sales office for accurate delivery details.



Monmouth GRP Medium Hopper

Width	395mm
Projection	200mm
Height	295mm
Maximum Pipe Size:	125 x 100mm



GRP 100 x 75mm Thirsk Pipe



Settle



Size (mm):  
125 x 100

Thirsk



Size (mm):  
100 x 75



GRP LEAD EFFECT

Malham



Size (mm):  
100 x 75

Cathedral



Size (mm):  
125 Dia



Linton



Size (mm):  
100 x 75



# GRP Hoppers

Yeoman Rainguard GRP Hoppers bring character and traditional style to any building - old or new. There are 45 standard designs available and these can be further enhanced by adding coats of arms, dates or embellishments.

The hoppers are through coloured, the standard finish is a reproduction cast iron surface in black. For other colours see pages 66-67. Should none of the standard designs meet the desired criteria, then we are able to manufacture to individual requirements or match an existing hopper by using an original to cast a mould from.




## Small GRP Hoppers

**Norfolk**




Width:	300mm
Projection:	175mm
Height:	165mm
Maximum Pipe Size:	100 x 75mm

**Lichfield**



Width:	230mm
Projection:	310mm
Height:	310mm
Maximum Pipe Size:	65 x 65mm

**Regent**



Width:	315mm
Projection:	215mm
Height:	250mm
Maximum Pipe Size:	110 x 110mm

**Regent Small**



Width:	265mm
Projection:	160mm
Height:	250mm
Maximum Pipe Size:	75 x 75mm

**Minor**



Width:	260mm
Projection:	180mm
Height:	200mm
Maximum Pipe Size:	75 x 75mm

**Major**



Width:	310mm
Projection:	215mm
Height:	255mm
Maximum Pipe Size:	100 x 75mm

**Corner Major**



Width:	315mm
Projection:	250mm
Height:	255mm
Maximum Pipe Size:	90 x 90mm

**Newport**



Width:	355mm
Projection:	185mm
Height:	130mm
Maximum Pipe Size:	100 x 75mm



**Suffolk**




Width:	320mm
Projection:	180mm
Height:	200mm
Maximum Pipe Size:	100 x 75mm

**Corner Suffolk**



Width:	325mm
Projection:	260mm
Height:	200mm
Maximum Pipe Size:	75mm Dia

**Rainwater Pipe Head**



Width:	255mm
Projection:	175mm
Height:	165mm
Maximum Pipe Size:	100 x 75mm



# Medium GRP Hoppers

**Farnley**



Width: 400mm  
Projection: 180mm  
Height: 360mm  
Maximum Pipe Size: 100 x 75mm

**Beade Box**



Width: 410mm  
Projection: 190mm  
Height: 250mm  
Maximum Pipe Size: 150 x 100mm

**Westminster**



Width: 615mm  
Projection: 300mm  
Height: 250mm  
Maximum Pipe Size: 150 x 100mm

**Trough**



Width: 485mm  
Projection: 250mm  
Height: 230mm  
Maximum Pipe Size: 150 x 100mm

**Essex**



Width: 360mm  
Projection: 255mm  
Height: 300mm  
Maximum Pipe Size: 125 x 100mm

**Bond**



Width: 450mm  
Projection: 250mm  
Height: 315mm  
Maximum Pipe Size: 125 x 100mm

**Ornamental**



Width: 355mm  
Projection: 195mm  
Height: 370mm  
Maximum Pipe Size: 100 x 75mm

**Pointer**



Width: 415mm  
Projection: 250mm  
Height: 375mm  
Maximum Pipe Size: 100 x 75mm

**Castle**



Width: 375mm  
Projection: 245mm  
Height: 330mm  
Maximum Pipe Size: 100 x 75mm

**Marlborough**



Width: 400mm  
Projection: 220mm  
Height: 360mm  
Maximum Pipe Size: 100 x 75mm

**Whitby**



Width: 290mm (without ears) 480mm (with ears)  
Projection: 175mm  
Height: 395mm  
Maximum Pipe Size: 100 x 75mm

**Victoria**



Width: 295mm  
Projection: 190mm  
Height: 380mm  
Maximum Pipe Size: 100 x 75mm

**Sussex**



Width: 345mm  
Projection: 235mm  
Height: 390mm  
Maximum Pipe Size: 75mm Dia

**Leeds**



Width: 470mm  
Projection: 215mm  
Height: 390mm  
Maximum Pipe Size: 100 x 75mm

GRP Ornamental Hopper

XL Aluminium 75 x 75mm Pipe

GRP HOPPERS



# GRP Hoppers

## Medium GRP Hoppers (Cont.)

**Bell**



Width: 345mm  
Projection: 225mm  
Height: 415mm  
Maximum Pipe Size: 100mm Dia

**Eastbourne**



Width: 330mm  
Projection: 165mm  
Height: 430mm  
Maximum Pipe Size: 100 x 75mm

**Penshurst**



Width: 415mm  
Projection: 215mm  
Height: 435mm  
Maximum Pipe Size: 75mm Dia

**Corner Penshurst**



Width: 365mm  
Projection: 230mm  
Height: 435mm  
Maximum Pipe Size: 75mm Dia

## Large GRP Hoppers

**Kensington**



Width: 590mm  
Projection: 305mm  
Height: 425mm  
Maximum Pipe Size: 150 x 100mm

**Highland**



Width: 350mm  
Projection: 265mm  
Height: 630mm  
Maximum Pipe Size: 125 x 100mm

**Royal**



Width: 630mm  
Projection: 200mm  
Height: 520mm  
Maximum Pipe Size: 100 x 75mm

**Halifax (with rose motif)**



Width: 500mm  
Projection: 210mm  
Height: 425mm  
Maximum Pipe Size: 150 x 100mm

**Hereward**



Width: 310mm  
Projection: 260mm  
Height: 550mm  
Maximum Pipe Size: 110 x 110mm

**York**



Width: 360mm  
Projection: 215mm  
Height: 595mm  
Maximum Pipe Size: 100 x 75mm

**Horse Shoe**



Width: 425mm  
Projection: 200mm  
Height: 555mm  
Maximum Pipe Size: 100 x 75mm

**Owl**



Width: 485mm  
Projection: 300mm  
Height: 840mm  
Maximum Pipe Size: 110 x 110mm



### Diamond



Width:	455mm
Projection:	190mm
Height:	680mm
Maximum Pipe Size:	125 x 100mm

### Bow



Width:	400mm
Projection:	200mm
Height:	615mm
Maximum Pipe Size:	90 x 90mm



GRP HOPPERS

### Mayfair



Width:	690mm
Projection:	340mm
Height:	330mm
Maximum Pipe Size:	150 x 100mm

### Box



Width:	510mm
Projection:	220mm
Height:	355mm
Maximum Pipe Size:	150 x 100mm

### Rose



Width:	620mm
Projection:	215mm
Height:	300mm
Maximum Pipe Size:	150 x 100mm

### Crest



Width:	580mm
Projection:	200mm
Height:	295mm
Maximum Pipe Size:	100 x 75mm

### Flute



Width:	440mm
Projection:	260mm
Height:	570mm
Maximum Pipe Size:	110 x 110mm

### Thompson



Width:	450mm
Projection:	265mm
Height:	430mm
Maximum Pipe Size:	100mm Dia

For more information on any of our products call us on **0113 279 5854**



# GRP

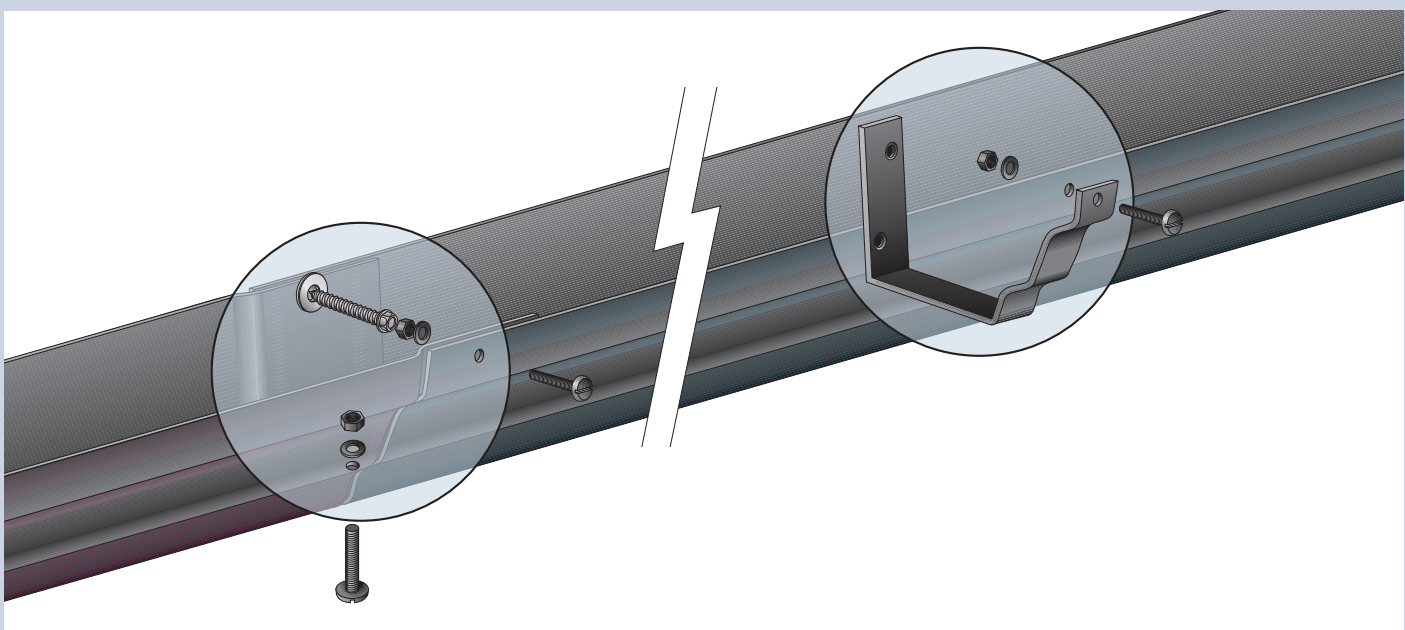
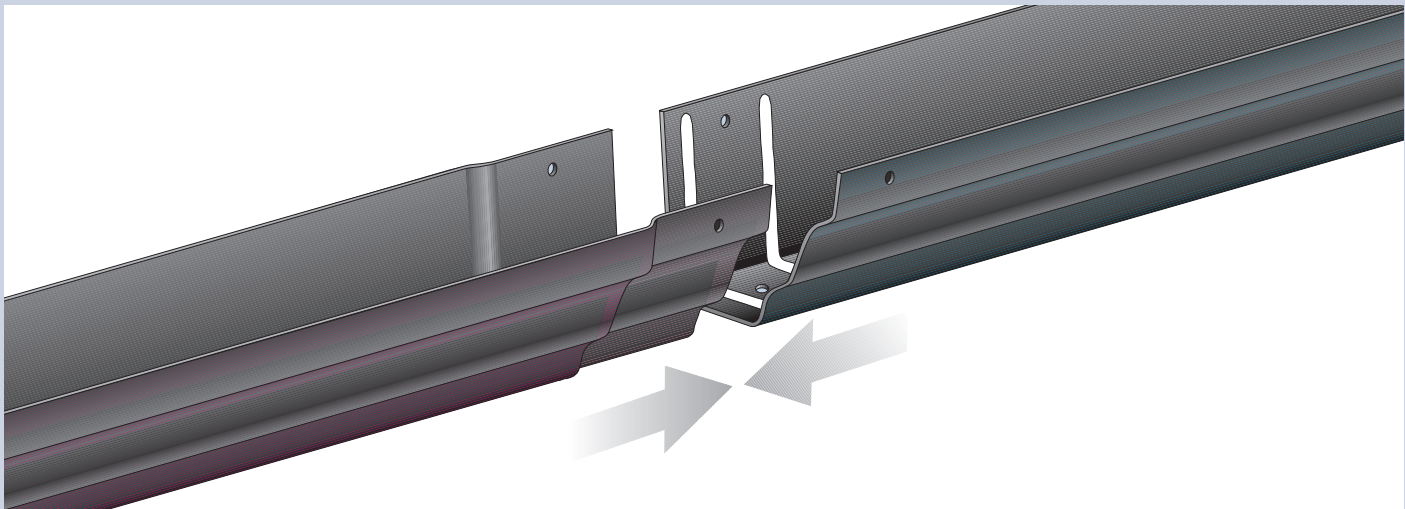
## Fixing Instructions

### Gutters

1. Fix gutter brackets to give correct line and level (min. 2 no. brackets per length). Ensure fixings are adequate to obviate pull out.
2. Place gutter in position ensuring correct sit into brackets.
3. At joint, drill gutters through underside and also through top of front face to accept gutter bolts (holes to be 3mm oversize to allow for thermal movement).
4. Ensure gutter socket and spigots are dry, clean, dust and grease free prior to applying silicone sealant.
5. Apply 2 no. 6mm sealant beads between spigot and socket joint around bolt hole to ensure alignment of leading edges of gutter when joints are bolted together.
6. Bolt joints together through previously drilled holes, at the same time aligning front edges. Do not over tighten.
7. Drill back of gutter approx. 18mm from top at every joint and maximum 600mm centres. (Holes to be 3mm oversize to allow thermal movement).
8. Secure gutter through previously drilled holes in back, using a minimum 18mm OD washer between head of fixing and gutter. Do not over tighten and cause misalignment of gutter (use packers between back of gutter and wall if necessary). Ensure fixings are adequate to obviate pull out.
9. Secure gutter to bracket by bolting through hole provided at every alternate bracket.
10. Remove any surplus sealant from faces of gutter.

The Yeoman Rainguard Gutter should be fixed wherever possible using the profile gutter brackets. This principle applies even when existing corbels are used.

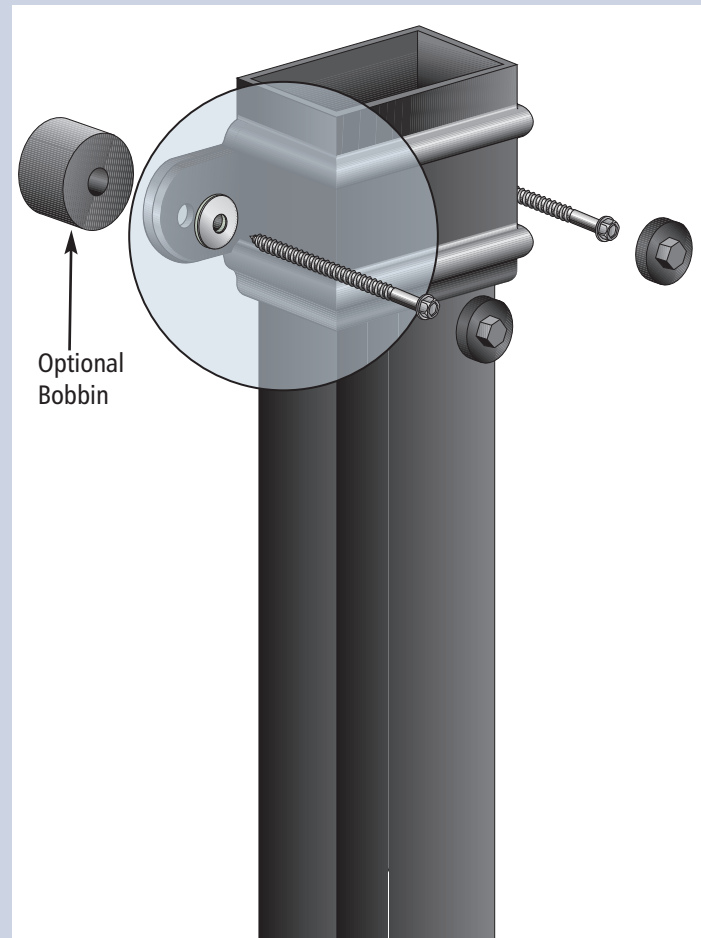
Where it is not possible to use brackets and the gutter is sat only on corbels, the gutters can be manufactured with extra strengthening, however the corbels should project far enough to support the full underside of the gutter.





# Pipes

1. Drill hole through ears of pipe using HSS drill.
2. Place rainwater pipe in correct position and mark wall through pre-drilled holes in ears of pipe.
3. Drill wall using appropriate masonry bit
4. Use only stainless steel screws and place through washer provided.
5. Fix through pre-drilled pipe ears using appropriate length screws and plugs to obviate pull out.
6. When fixed securely push on a cover cap to conceal screw head.
7. Ensure pipes are plumb and offer up next pipe or component.
8. Fit in to socket leaving approx. 5mm gap for expansion and contraction.
9. Joints between sections can be pointed with silicone if required.
10. Bobbins are available to ensure a straight line to rainwater pipes where the building surface may be uneven.
11. Pipes may be cut to length using a fine tooth hacksaw.





# CAST IRON

## Rainwater Systems

Yeoman Rainguard's Cast Iron Rainwater gutters, down pipes and Soil pipe systems are strong and durable offering years of service (if maintained correctly).

Manufactured by Hargreaves, the UK's leading manufacturers of Cast Iron rainwater products, assuring the highest quality is accomplished.

With a comprehensive choice of gutter profiles and pipe sizes, Cast Iron is the perfect option for use in conservation areas as well as on listed buildings.









# CAST IRON Gutters

## Composition Design & Manufacture

Manufactured in grey iron and conform to BS460.

## Shape & Dimensions

Supplied in standard lengths 1.83m.

## Standard Accessories

Running outlets, stop end outlets (handed), 90° external and internal angles, 135° external and internal angles, stop ends (handed), joint clips, fascia brackets, rise and fall brackets, rafter brackets, stainless steel gutter bolts, nuts and washers, silicone joint sealants.

## Colours and Finishes

Delivered in grey transit coat ready for onsite painting. Painting specification available on request. We can also supply pre-finished in black at a premium. Other colours are available.

## Availability

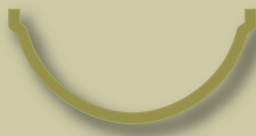
Certain of the more popular sizes are normally held in stock. Other sizes are readily available; please contact our sales office for accurate delivery details.

### Plain Half Round



Size (mm):  
100, 115, 125, 150  
Length: 1830mm

### Beaded Half Round



Size (mm):  
100, 115, 125, 150  
Length: 1830mm

### Ogee



Size (mm):  
100, 115, 125  
Length: 1830mm

### MOG

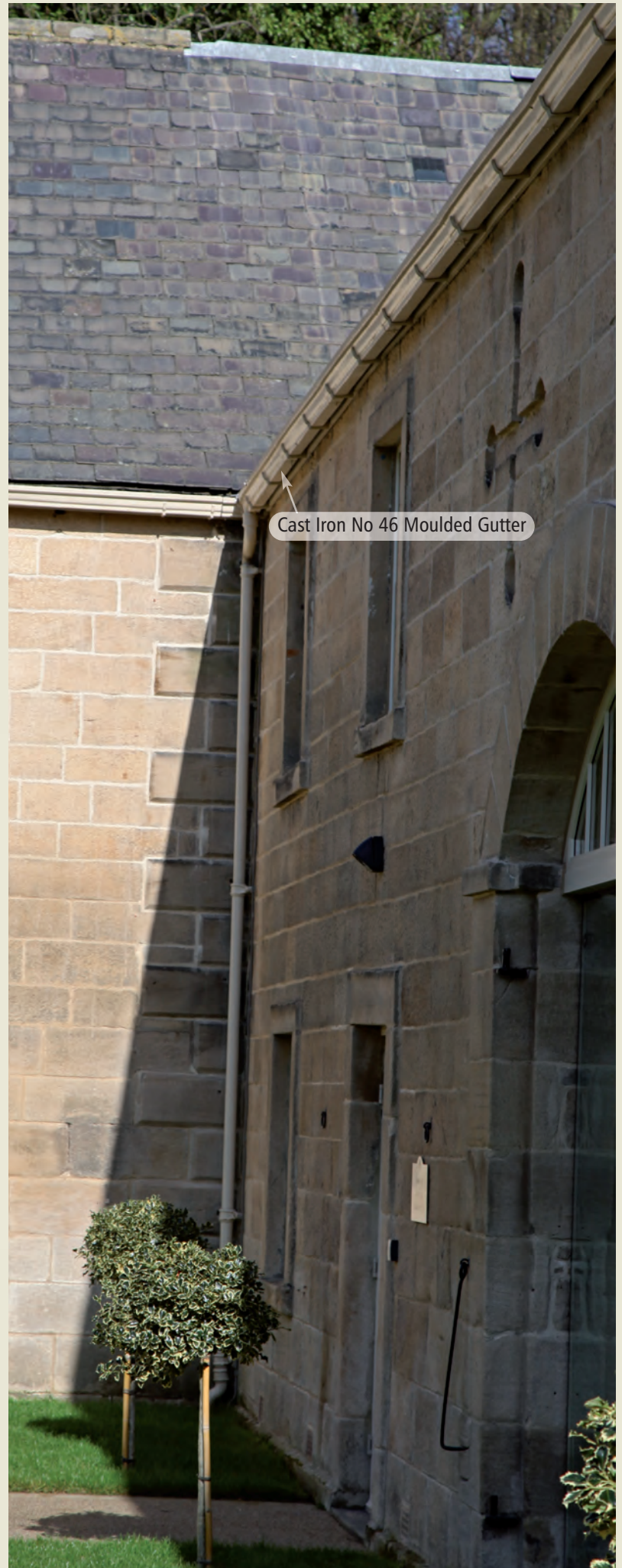


Size (mm):  
125w x 100h, 150w x 100h  
Length: 1830mm

### No 46 Moulded



Size (mm):  
100w x 75h, 125w x 100h  
Length: 1830mm





# Cast Iron Gutter Accessories (Available in all profiles)

Running Outlet



Stop End Outlet Right Hand



Stop End Outlet Left Hand



90° External Angle



90° Internal Angle



135° External Angle



135° Internal Angle



Stop Ends



Joint Clip



Facia Bracket



Drive-in Rise and Fall Bracket



Rafter Bracket



Stainless Steel Gutter Bolt



Silicone Joint Sealant





# CAST IRON Pipes

## Composition Design & Manufacture

Manufactured in grey iron and conform to BS460.

## Shape & Dimensions

Supplied in standard lengths 1.83m, 1.2m, 0.9m and 0.6m.

## Standard Accessories

Offsets, plinths, branches, bends, shoes, loose sockets with spigot, access pipes, stainless steel fixing screws, cover caps, wire balloons, bobbins, pipe nails.

## Special Accessories

Special bends and offsets, access plates and rodding eyes available to order.

## Colours & Finishes

Delivered in grey transit coat ready for onsite painting. Painting specification on Fixing Instructions (see page 42). We can also supply pre-finished in black at a premium. Other colours are available.

## Availability

Certain of the more popular sizes are normally held in stock. Other sizes are readily available; please contact our sales office for accurate delivery details.



### Round

Size (mm): 65 Dia, 75 Dia, 100 Dia



### Square

Size (mm): 75 x 75, 100 x 100, 125 x 125



### Rectangular

Size (mm): 100 x 75, 125 x 100, 150 x 100





# Cast Iron Pipe Accessories

All components available in round (as illustrated), square and rectangular.

<p><b>Offset</b></p>  <p>(mm): 75 115 150 230 305 380 457 533 610</p> <p>Other projections to be advised</p>	<p><b>Plinth Offset*</b></p>  <p>Projection to be advised. Made to order.</p>	<p><b>Branch</b></p>  <p>Available in 92°, 112°, 135°</p>	<p><b>Bend</b></p>  <p>Available in 92°, 112°, 135°</p>
<p><b>Shoe</b></p> 	<p><b>Loose Socket with Spigot</b></p> 	<p><b>Access Pipe</b></p> 	<p><b>Stainless Steel Fixing Screw and Cap</b></p>  <p>64, 90, 127mm long screws available</p>
<p><b>Wire Balloon</b></p> 	<p><b>Ornamental Ear Bands</b></p> <div data-bbox="539 1263 838 2084"> <p>(A) </p> <p>(B) </p> <p>(C) </p> <p>(D) </p> <p>(E) </p> <p>(F) </p> <p>(G) </p> <p>(H) </p> </div> <p>Other styles are available. Please contact our sales office for further details.</p>		
<p><b>Bobbin</b></p> 			
<p><b>Pipe Nail</b></p> 			



# TX CAST IRON

## Soil Pipe Standard Accessories

### Materials

Pipes and fittings are manufactured in grey cast iron which exceeds the requirements of BSEN 1561 Grade EN-JL 1020, ISO 185 Grade 15.

All push fit sockets are supplied with EPDM rubber sealing rings which are suitable for most applications but where aggressive waste liquids are to be discharged, please check with our technical department as to their suitability.

### Coating

Pipes and fittings are factory coated with two pack gloss paint finish, suitable for internal and external installations. All pipes have a yellow ochre two pack internal coating.

### Features

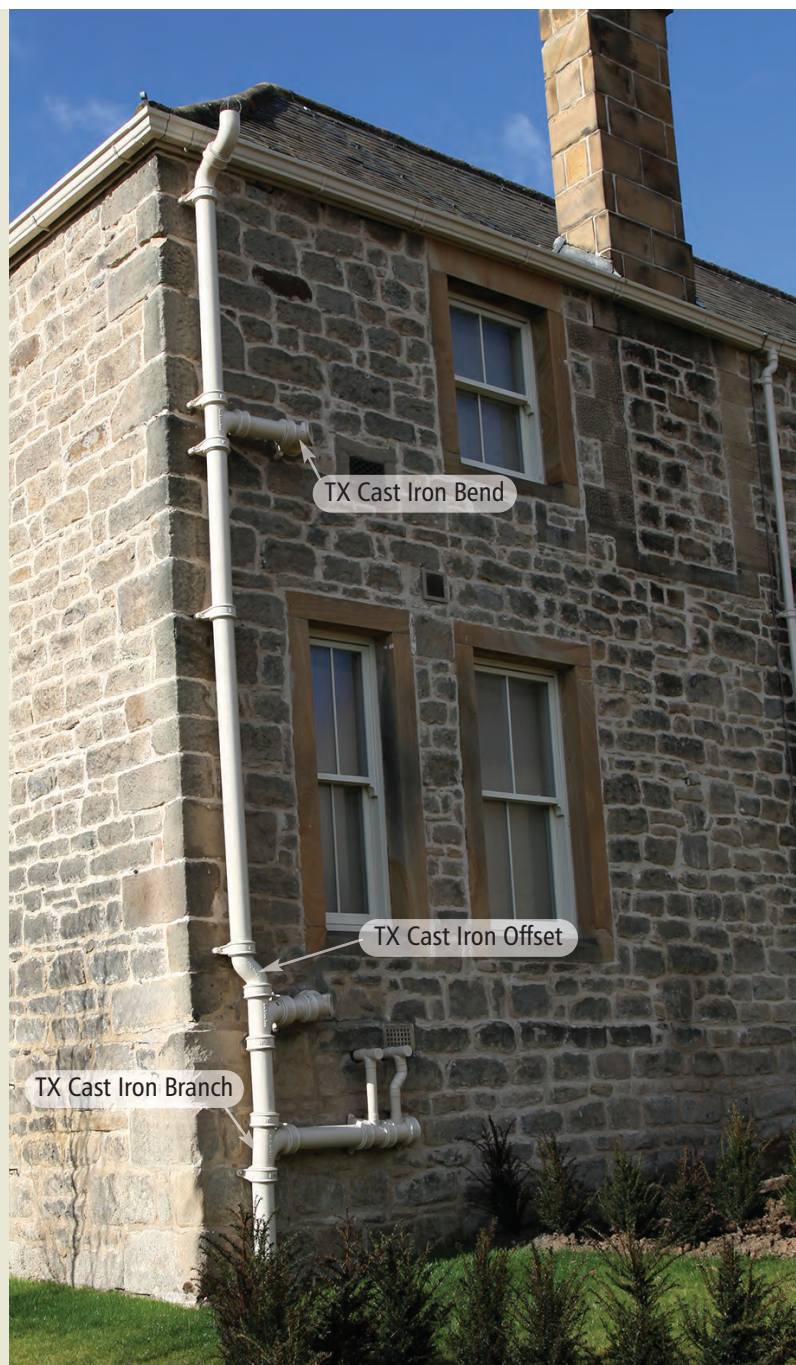
- Push fit sockets fitted with 2 EPDM rubber sealing gaskets.
- Sockets available in 3 versions: Eared, Plain and Slip eared.
- Pipes available in 1.8m lengths to match traditional systems or 3.0m lengths.
- Full range of components.

### Benefits

- Ease of installation.
- No special tools or equipment required for jointing.
- Substantial labour saving due to jointing method.
- Readily available.
- Complimentary to cast iron & aluminium XL rainwater systems.
- Suitable for new projects in addition to conservation and listed buildings.

### Standards and Codes of Practice

- BS416 part 2: Soil, waste and ventilating pipes and fittings.
- BS EN 681-1: Synthetic rubber gaskets.
- BS EN 12056: Codes of practice for gravity drainage systems.



## Cast Iron Soil Pipe Accessories

100mm Dia	Push Fit Socket Plain	Push Fit Socket Eared	Slip Socket Eared
 <p>Lengths 3.0m, 1.8m</p>			
Short Radius Bend 87.5°	Short Radius Bend 67.5°	Short Radius Bend 45°	Long Radius Bend 87.5°
			



Long Radius Bend 22.5°

Short Radius Bend 87.5°  
c/w DoorLong Radius Bend 87.5°  
c/w Door

Long Tail Bend 87.55°



Single Branch 67.55°



Single Branch 45°



Single Radius Branch 87.55°



Double Radius Branch 87.55°

Single Radius Branch 87.55°  
c/w DoorSingle Radius Branch 87.55°  
c/w 50mm Boss on RearSingle Radius Branch 87.55°  
c/w 50mm Boss on LeftSingle Radius Branch 87.55°  
c/w 50mm Boss on Right

Access Pipe c/w Round Door



Access Pipe c/w Square Door



Offset 75mm Projection



Offset 130mm Projection



Boss Pipe Single



Boss Pipe Double Opposed



Boss Pipe Double 90° Opposed



Strap On Boss



Adjustable Bracket



Blank End



Blank End



Relaxing Tool &amp; Lubricant





# CAST IRON Hoppers







#### Pateley



Width:	210mm
Projection:	163mm
Height:	195mm
Maximum Pipe Size:	75mm Dia

#### Hebden



Other sizes available

Width:	305mm
Projection:	185mm
Height:	150mm
Maximum Pipe Size:	125 x 100mm

#### Sowerby



Width:	255mm
Projection:	180mm
Height:	175mm
Maximum Pipe Size:	100mm Dia

#### Denholme



Width:	335mm
Projection:	200mm
Height:	290mm
Maximum Pipe Size:	100 x 75mm



#### Wharfedale



Width:	305mm
Projection:	195mm
Height:	210mm
Maximum Pipe Size:	75mm Dia

#### Grassington



Width:	305mm
Projection:	197mm
Height:	255mm
Maximum Pipe Size:	100 x 75mm

#### Rosedale



Width:	300mm
Projection:	200mm
Height:	230mm
Maximum Pipe Size:	100 x 75mm

#### Burnsall



Width:	355mm
Projection:	225mm
Height:	305mm
Maximum Pipe Size:	75mm Dia

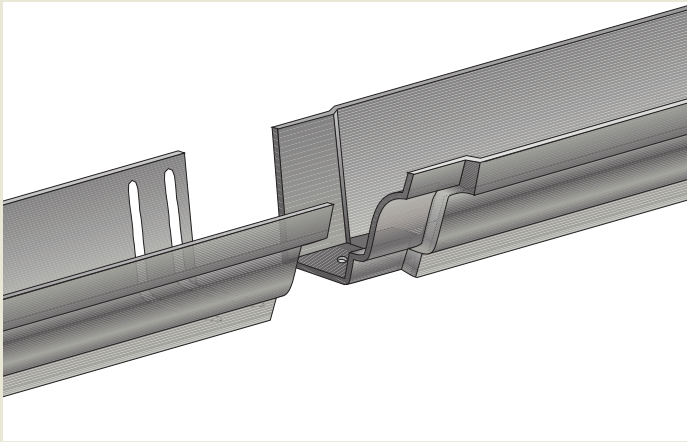


# CAST IRON

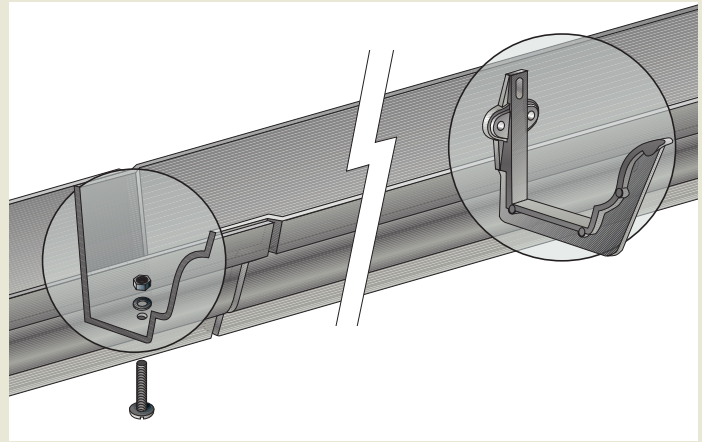
## Fixing Instructions

### Gutters

1. Fix gutter brackets at 600mm centres to give correct line and level. Use appropriate length stainless steel screw.
2. Place gutter in position and ensure correct sit into brackets.
3. Ensure all joint areas are clean, dry, dust and grease free prior to applying silicone sealant.

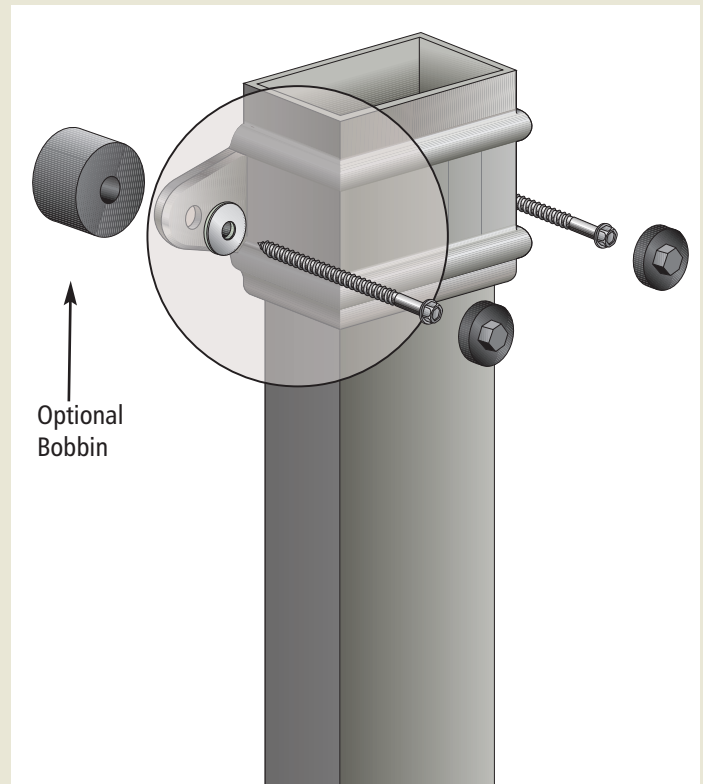


4. Apply two 6mm beads of low modulus silicone to joint and around bolt hole.
5. Insert 25 x 5mm stainless fixing bolts from the underside of the gutter. Do not over tighten.
6. Remove any surplus sealant from faces of gutter.
7. Gutter may be cut using a tungsten tipped hacksaw or powered disc cutter.
8. Ensure any cut ends are painted.



### Pipes

1. Place rainwater pipe in correct position and mark wall through pre-drilled holes in ears of pipe.
2. Drill wall using appropriate masonry bit.
3. Fix through pre-drilled pipe ears using large head pipe nails, Rawl bolts or Coach screws.
4. Ensure pipes are plumb and offer up next pipe or component.
5. Fit in to sockets centralising by using 3 no. lead wedges.
6. Joints between sections can be pointed with silicone if required.
7. Bobbins are available to ensure a straight line to rainwater pipes where the building surface may be uneven.
8. Pipes may be cut to length using a powered disc cutter, tungsten tipped hacksaw or pipe wheel cutter. Ensure any burr is removed with a file.
9. Ensure all cut edges are painted.



### Painting Specification for Gutters & Pipes

1. Products supplied in a grey transit coat only.
2. All pipes, gutters and accessories should be inspected for any sign of rust and cleaned using a wire brush.
3. A primer coat should then be applied, followed by two coats of undercoat and one coat of gloss.
4. For coastal areas, please consult your paint stockist for appropriate specification.



# TX Cast Iron Soil Pipe

## Pre Installation

TX sockets, both plain and eared are designed only for use with TX pipes and fittings.

Design of the soil stack should allow at least one eared socket on each fitting to enable the system to be anchored securely to the building.

Installation should proceed from the bottom to the top of the soil stack with typically a length of pipe, boss pipe or branch at the base of the

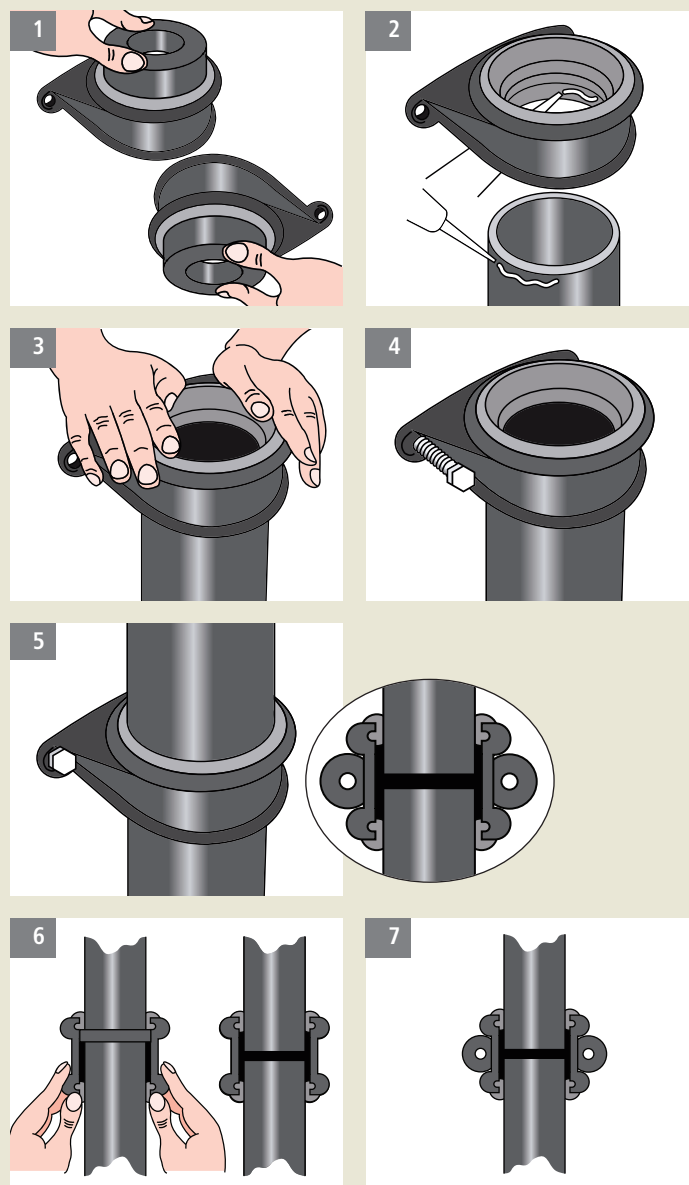
stack. The first pipe/fitting should be connected to the underground drainage system to ensure a secure base and have an eared socket fitted to the top to ensure stability and security of the pipe work before proceeding further.

Subsequent pipes/fittings installed vertically above this point should incorporate at least one eared socket. On branch arms we suggest the use of a plain socket to provide the correct aesthetical appearance. The assembled joint is designed to be a tight fit to ensure compliance with a pressure test and long life performance.

## Installation

In all assembly operations it is essential for the gasket and corresponding pipe/fitting area to be fully lubricated to enable insertion of pipe/fitting in to TX socket.

1. To aid insertion of the components, immediately prior to assembling any joint, pre relaxation of the rubber gasket is recommended. Apply a small amount of lubricant to the rubber gasket/s and insert the gasket relaxing tool into the joint. Slide the relaxing tool up and down over the gasket sealing face three or four times. The gasket will now be temporarily softer and enable easier assembly of the soil stack joint. Caution: Do not over insert the relaxing tool past the rubber gasket.
2. Apply a small amount of lubricant to the rubber gaskets at both ends of the push fit socket. This is necessary to ensure the insertion of pipes and fittings in to the socket.
3. Push the socket over the end of the pipe after lubricating both pipe and gasket ensuring pipe end is fully inserted and abutting the central register in the socket.
4. If the socket is eared, securely fix to the substrate using appropriate stainless steel fixings.
5. Push the next pipe/fitting into the socket checking that it is fully inserted and abutting the central register. Repeat the above process on the remaining joints until the stack is complete.
6. When cutting into an existing cast iron soil system, a slip socket with ears should be used. This has no central register and allows the socket to be slipped onto the existing pipe up to the second gasket, before placing the new fitting in position.
7. Next slide the eared socket into the correct position where respective gaskets make a seal on the pipe/fitting on either side of the joint.



## Cutting

Pipes and fittings should be cut using a powered disc cutter always observing the manufacturers recommendations. A hacksaw could also be used.

Care should be taken when cutting to achieve a square clean cut. Edges should be deburred, cleaned of debris and exposed surfaces re-touched.



# COPPER, ZINC & STAINLESS STEEL Rainwater Systems

Yeoman Rainguard has joined forces with Coppa Gutta the UK's leading manufacturer of Copper, Zinc and Stainless Steel Rainwater Systems.

Copper Systems have been used successfully for many generations with proven durability, through natural oxidation, delivering an almost unlimited service life.

Zinc and Stainless Steel bring the contemporary feel to any project with added durability and minimal maintenance.







Copper 80mm Dia Pipe →

COPPER, ZINC & STAINLESS STEEL



# COPPER, ZINC & STAINLESS STEEL Gutters

## Composition Design & Manufacture

Manufactured in the UK from Copper, Zinc and Stainless Steel. The gutters are fixed using fascia or rafter brackets.

## Shape & Dimensions

Supplied in either half round, MOG or Box section and are supplied in 2.4m lengths.

## Standard Accessories

Running outlets, Swiss outlets, loose outlets, 90° external and internal angles, stop ends (handed), joint clips, fascia brackets, rafter brackets.

## Finishes

Copper is available in classical bright finish, which will age naturally over time to a green patina. We are able to supply a Verdigris solution to speed up the ageing process.

Zinc gutters are available in natural finish. Stainless Steel gutters are natural.

**Please note:** Gloves should be worn when handling the above to avoid finger prints.

## Maintenance

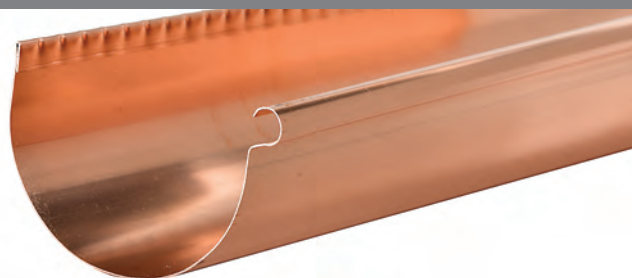
Yeoman Rainguard Copper, Zinc & Stainless Steel requires no special maintenance other than periodical cleaning out.



### Half Round Gutter



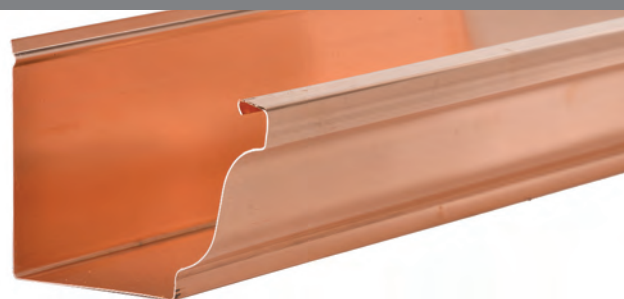
Size (mm): 125 x 70  
185 x 130



### MOG Gutter



Size (mm): 125 x 98  
152 x 130



### Box Gutter



Size (mm): 90 x 65  
120 x 90





# Copper, Zinc & Stainless Steel Gutter Accessories

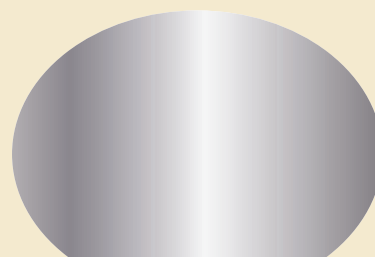
All components available in half round (as illustrated), MOG and Box as well as in all three finishes.



Copper



Zinc



Stainless Steel

Running Outlet



Swiss Outlet

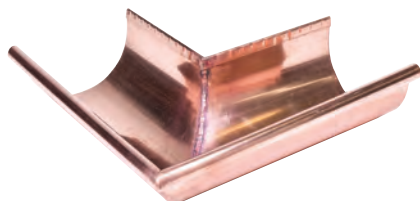


Only available  
for Half Round

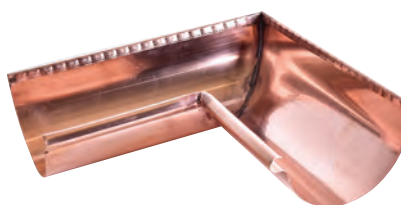
Loose Outlet



90° External Angle



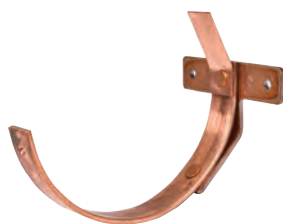
90° Internal Angle



Stop End



Fascia Bracket



Rafter Bracket



COPPER, ZINC & STAINLESS STEEL GUTTERS

For more information on any of our products call us on **0113 279 5854**



# COPPER, ZINC & STAINLESS STEEL Pipes

## Composition Design & Manufacture

Manufactured in the UK from Copper, Zinc and Stainless Steel, the pipes are installed using a 2 part bracket with a threaded screw.

## Shape & Dimensions

Supplied in round or square section and are supplied in 2.4m lengths.

## Standard Accessories

Adjustable swan necks, bends, branches, shoes, diverters, dispensers, loose connectors, pipe brackets, bird nests.

## Finishes

Copper is available in classical bright finish, which will age naturally over time to a green patina. We are able to supply a Verdigris solution to speed up the ageing process.

Zinc gutters are available in natural. Stainless Steel pipes are natural.

**Please note:** Gloves should be worn when handling the above to avoid finger prints.

## Maintenance

Yeoman Rainguard Copper, Zinc & Stainless Steel requires no special maintenance other than periodical cleaning out.



### Round

Size (mm):  
80 Dia  
100 Dia



### Square

Size (mm):  
80 x 80

**Please note:**  
Square pipes  
are crimped  
at back





# Copper, Zinc & Stainless Steel Pipe Accessories

All components available in round (as illustrated) or square as well as in all three finishes.



Copper

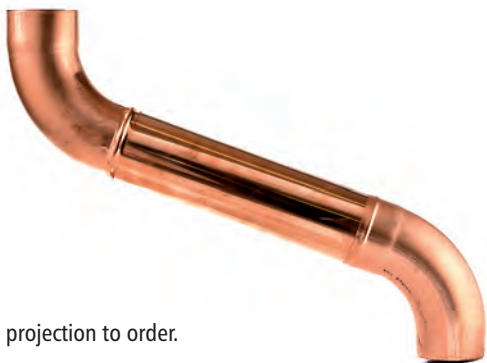


Zinc



Stainless Steel

Adjustable Swan Neck



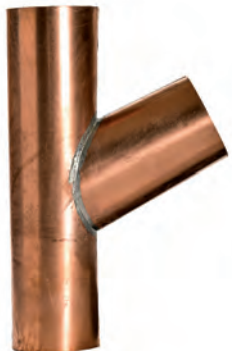
0 - 700 projection to order.

85° Bend



Available in 72° and 40°

Branch



Shoe



Diverter



Dispenser



Loose Connector



Pipe Bracket



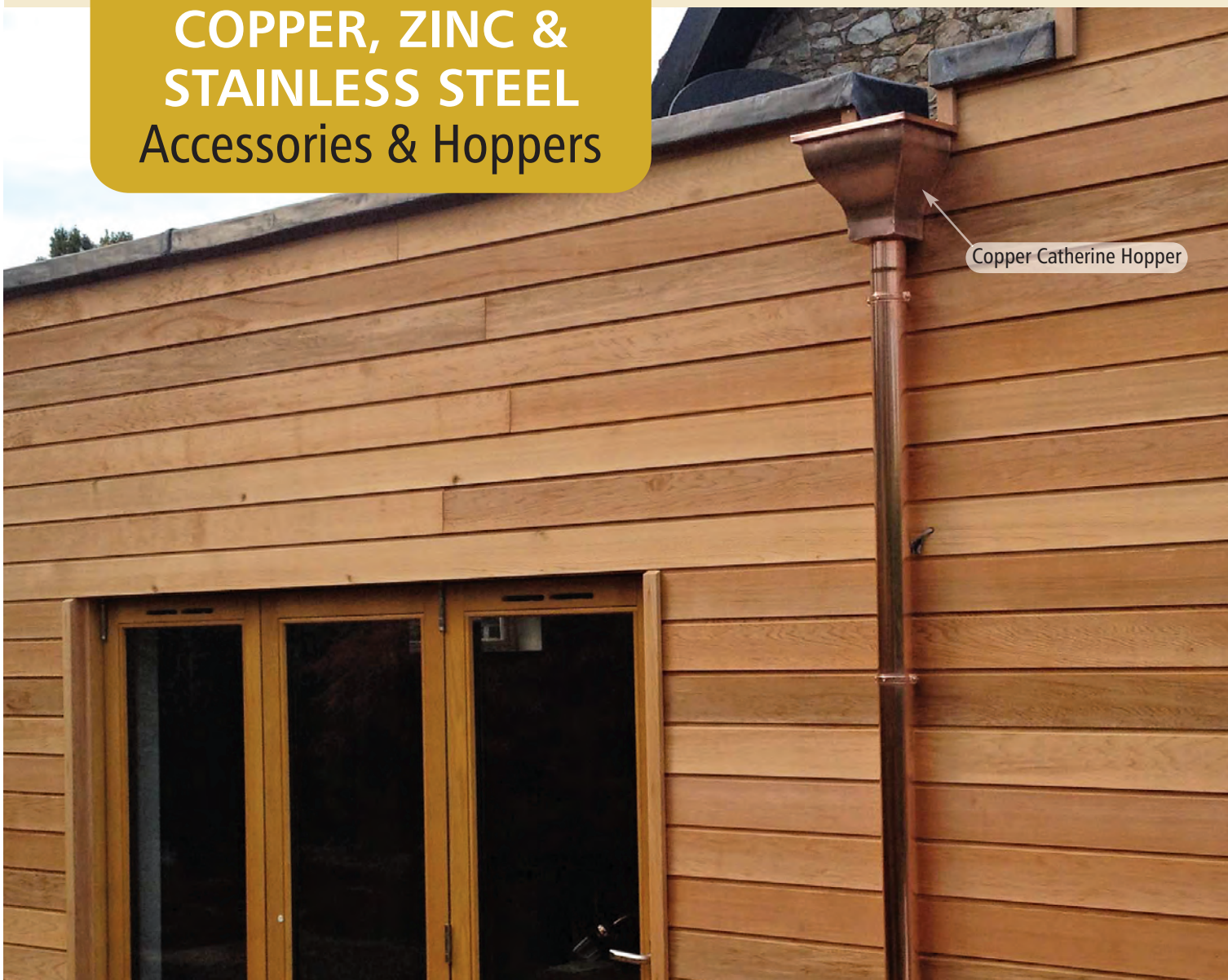
Birds Nest



COPPER, ZINC & STAINLESS STEEL PIPES



# COPPER, ZINC & STAINLESS STEEL Accessories & Hoppers



Copper Catherine Hopper

## Copper, Zinc and Stainless Steel Accessories

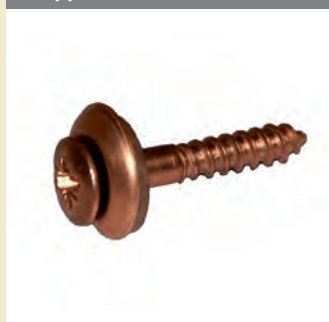
Joint Sealant



Copper Rivet



Copper Screw



Verdigris Solution



Spray Gun



Solder



Flux Solution





# Copper and Zinc Hoppers

Margaret



Zinc



Width:	280mm
Projection:	170mm
Height:	235mm
Maximum Pipe Size:	80 x 80mm

Charlotte



Zinc



Width:	220mm
Projection:	220mm
Height:	300mm
Maximum Pipe Size:	80 x 80mm

Catherine



Zinc



Width:	240mm
Projection:	170mm
Height:	210mm
Maximum Pipe Size:	80 x 80mm

Victoria



Zinc



Width:	250mm
Projection:	250mm
Height:	370mm
Maximum Pipe Size:	80 x 80mm



# COPPER, ZINC & STAINLESS STEEL

## Fixing Instructions

### Gutters

#### Fascia Brackets

1. Install a fascia bracket 150mm from both ends of the fascia board.
2. Run a level string between the two to ensure same height.
3. Fix intermediate brackets, level with the guide string, equidistance apart but at no more than 1.0 m centres. (In areas that receive heavy snowfall centres should be reduced to 500mm).

N.B. If several elevations are to be fitted with a continuous link of gutter it is advisable to fit all brackets at each corner first to establish same height all round.

#### Rafter Brackets

1. Install a rafter bracket on last roof truss at both ends determining the same height with a string as above.
2. Fix intermediate brackets equidistant every other truss but no more than 1.0 m centres (500mm in heavy snowfall areas).

N.B. for installing to top of the truss, bend bracket in a vice to correct angle. Leave 1st bracket in the vice as a template for subsequent bends.

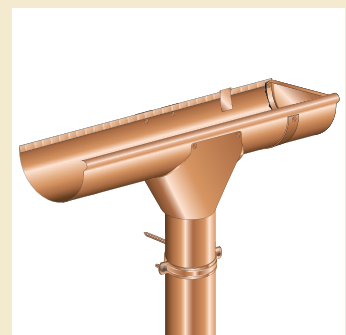
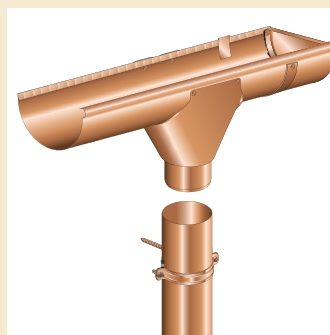
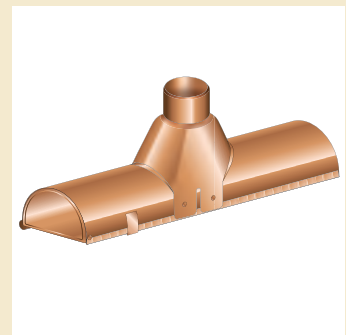
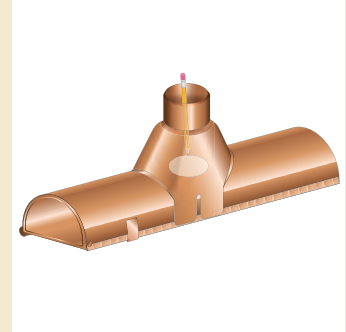
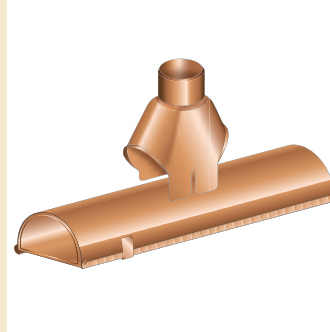
If fitting brackets to an existing roof, bend brackets to correct roof pitch, then twist through 90° and screw to side of truss.

#### Fitting Internal Brackets

1. Mark a level line from the top rear edge of the gutter along the fascia board.
2. Brackets should be fitted at 600mm centres onto the gutter sections prior to placing gutter in position.
3. Line up the gutter c/w brackets with the top rear edge running along the line already marked on the fascia board.
4. Screw internal brackets at each end of the gutter to the fascia board.
5. Continue with the intermediate brackets.

#### Swiss Outlets

1. Mark the desired position of the Swiss outlet on the gutter length.
2. Cut out the correct diameter hole with nibblers or a hole saw.
3. Place Swiss outlet into position bending back tags over to hold into place.
4. Drill and rivet outlet with 2 rivets to the front of the gutter.



#### Loose Outlets

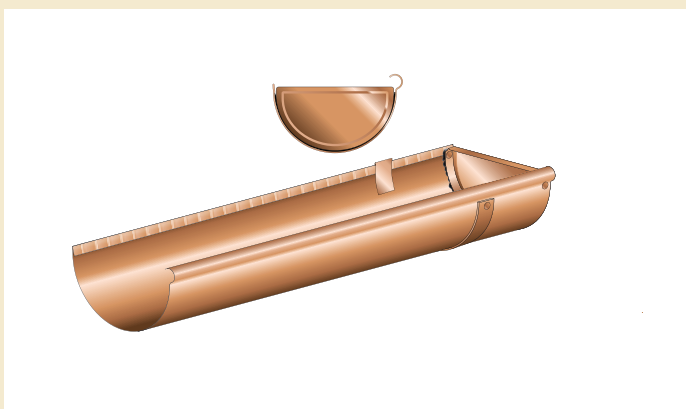
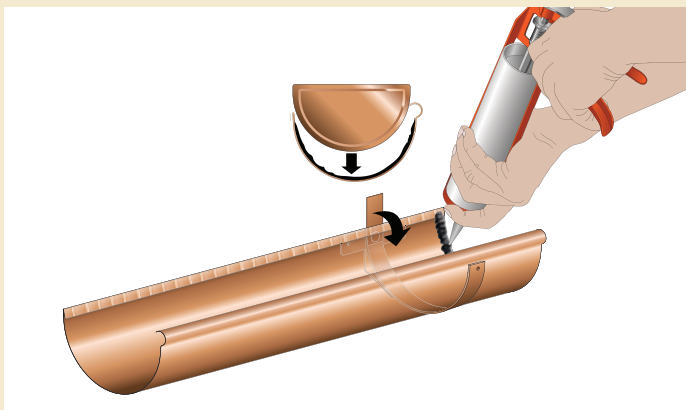
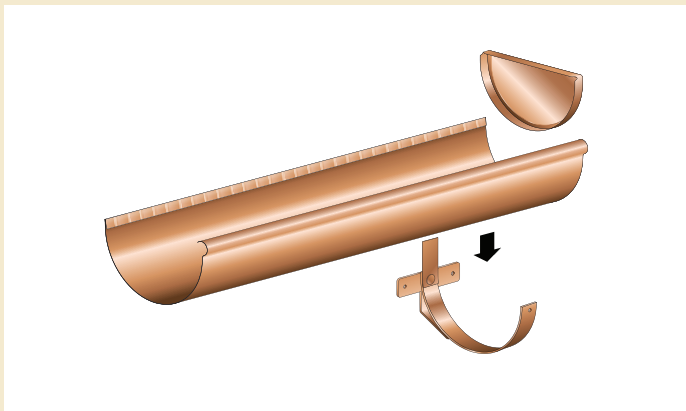
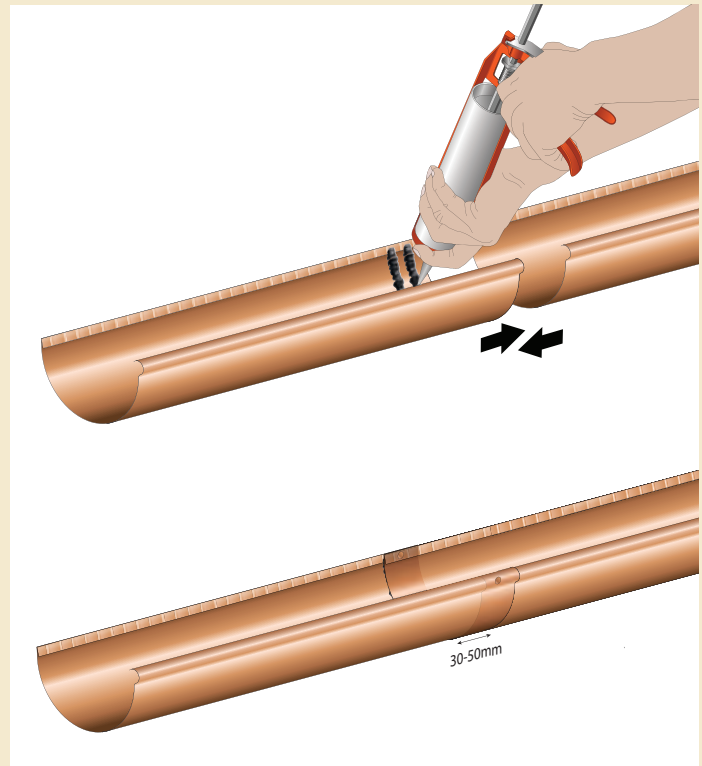
1. Follow points 1 & 2 for Swiss Outlet
2. Place the loose outlet into position applying sealant around the lip to make watertight.



### Half Round Gutter

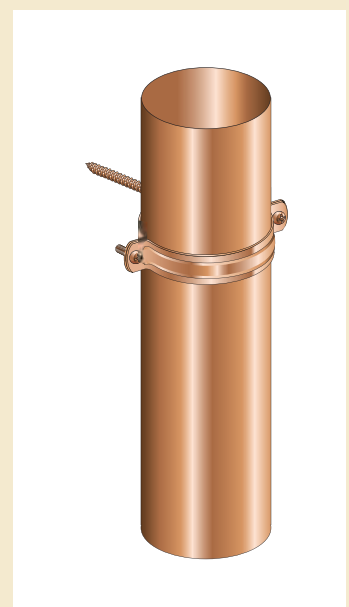
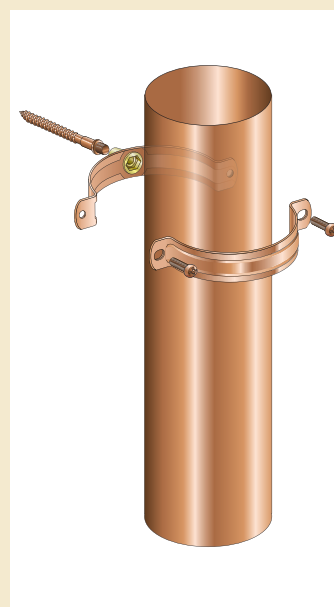
1. Pop rivet then bond stop ends in place with silicone sealant.
2. Fit your first gutter in place at one end of the straight run.
3. Overlap the next section of gutter about 30 – 50mm with the first using enough sealant to ensure a watertight joint.
4. Pop rivet all joints through the overlap adding another layer of sealant inside.
5. Cut the final length of gutter to size using nibblers or a hacksaw.
6. When fitting corners use the same principals as detailed above.
7. When joined lengths of gutter are correctly positioned secure to the brackets by bending over the back bracket tags and pop rivet through the top front of the gutter and bracket.

N.B. if using internal brackets each complete section of gutter can be screwed to the fascia.



### Pipes

1. Use a spirit level or plumb bob to find a vertical line.
2. Fit pipe brackets 3 per length or 150mm centres. (One bracket as near to the top and one near the bottom of the pipe.)
3. Downpipes can be cut to required lengths using nibblers or a hacksaw.
4. Ensure the swaged ends of the pipes should be uppermost as this acts as a female joint.



COPPER, ZINC & STAINLESS STEEL



## QUALITY & ENVIRONMENTAL CONTROL

Yeoman Rainguard hold internationally recognised standards in both quality and environmental matters.

**ISO 9001** is an accreditation which ensures that as a company we offer a high quality of both products and service to our customers, including on time and accurate delivery of materials, working with a "get it right first time" attitude.

Being independently audited at regular intervals demonstrates the commitment to quality and customer care.

**ISO 14001** assures clients and employees that we continually strive to improve our environmental performance through more efficient use of resources and reduction of waste, gaining a competitive advantage which we can pass on to our customers.



## HEALTH & SAFETY CONSCIOUS

As manufactures, suppliers and installers of our rainwater systems we are extremely vigilant with regards to our health and safety standards to protect both our own workers and those people working with and around us.

We proudly hold a collection of health & safety accreditations - CHAS, Constructionline and Worksafe Contractor – as recognised by SSIP, educating our employees to work to meticulous health & safety standards both on and off site.

Our directly employed and approved installers hold CSCS cards, guaranteeing they work with the consideration of other site personnel's, the public's, as well as their own, personal safety.

## INSTALLING YEOMAN RAINGUARD RAINWATER SYSTEMS YOURSELF?

**Please note:** Complete fixing instructions can be found at the end of every material section throughout the brochure.

**Safety should be the first consideration when working on any building, especially at height – We recommend you follow the guidelines provided by the HSE for work on construction sites – [www.hse.gov.uk](http://www.hse.gov.uk)**



## FREQUENTLY ASKED QUESTIONS

### **Where do I obtain Rainguard products?**

Rainguard products are available direct from us here in Leeds or through most local/national builders merchants.

### **How available is your range of rainwater goods?**

Most items are held in stock in standard finishes so delivery should be 3-5 days. Our GRP range is handmade so can take up to 14 working days from order to delivery. For special colours, profiles and designs then please contact our sales office on 0113 279 5854 for an exact delivery date.

### **Can you supply aluminium systems in mill finish?**

Yes we can. We do however put the aluminium guttering ranges through our treatment process first to ensure the products come to you free from extrusion oils etc.

### **Can aluminium products be fitted unpainted?**

Yes it can. Once exposed to the elements, the aluminium will slowly oxidize to a dull grey colour. The oxidation will protect the aluminium from any further weathering.

### **Can I use my own joint sealant?**

Whilst we cannot insist that our own brand silicone is used we can advise that comprehensive testing has taken place using Yeoman Sealant to ensure the best adhesion/water tightness available.

### **How are your cast iron products supplied?**

Cast iron guttering and downpipes will arrive in a grey primer ready for onsite painting. Any blemishes should be spot primed prior to applying a further two under coats and one top coat of a good quality exterior paint. For coastal areas consult your local paint specialist.

We can supply the cast iron in a painted black finish as an extra.

### **Do you supply the GRP systems in any colour?**

Yes, we manufacture most products in black, however, it is just as easy to manufacture in a colour. Choose from the BS Colour Range or RAL Colour range. A small premium may apply for powder coating brackets if applicable.

### **Is a radius gutter available in your GRP range?**

GRP guttering is perfect for radius gutters as we can make moulds to suit any radius. These are usually supplied in 1.0m lengths and radius template would be required.

### **What would you recommend for matching and replacing an existing cast iron gutter?**

If we are provided with an original gutter we can sandblast this and then take a mould from it. We can then produce lengths of GRP gutter that will be exactly the same as before, down to each little blemish.

### **How often do Yeoman Rainguard rainwater systems need re-painting?**

This varies from system to system and depends on the environment they are used in:-

**Our aluminium** rainwater systems undergo a four part treatment process prior to powder coating, followed by a two stage inspection before the goods are despatched. It then undergoes a rigorous salt water testing process.

These tests indicate an anticipated life span before refinishing of 25 years plus for inland locations and approximately 15 years in coastal environments.

**Cast Iron** gutters & downpipes, generally speaking, and depending on location, will need repainting every 3 to 5 years.

If the painted finish is supplied this should last 10 years in normal conditions.

**Yeoman Rainguard GRP** products are through coloured being UV stable, and as such, will not fade in sunlight like some uPVC products. This stability gives the product a life of 25 years before re painting is necessary. This may be reduced in coastal environments.



# CORNICE AND FASCIAS

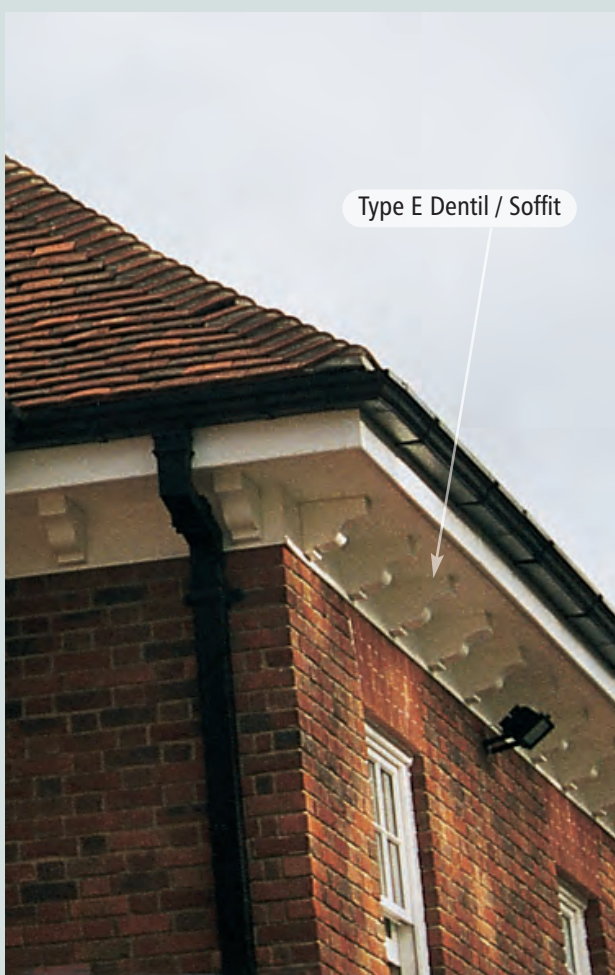
Yeoman Cornices and Fascias are manufactured from GRP - glass reinforced polyester, a material ideal for today's environment - flexible and lightweight, yet offering heavy duty strength.

Detailed alongside are our standard mouldings, however the beauty of GRP means other designs can be easily manufactured or existing features replicated.

All sections are through coloured to client requirements and, as such, will require no maintenance other than periodical cleaning with a mild soap solution.

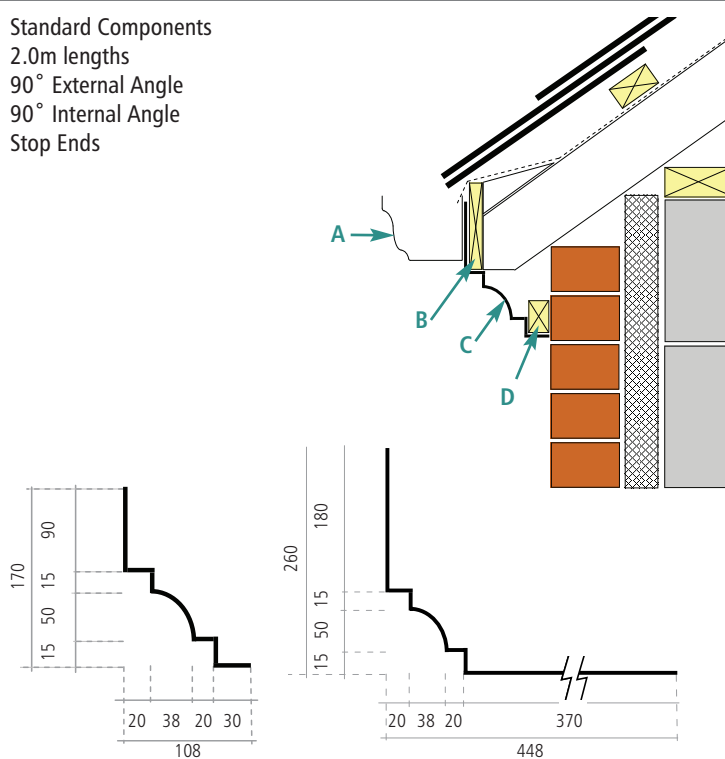






#### Type A Cornice

Standard Components  
2.0m lengths  
90° External Angle  
90° Internal Angle  
Stop Ends



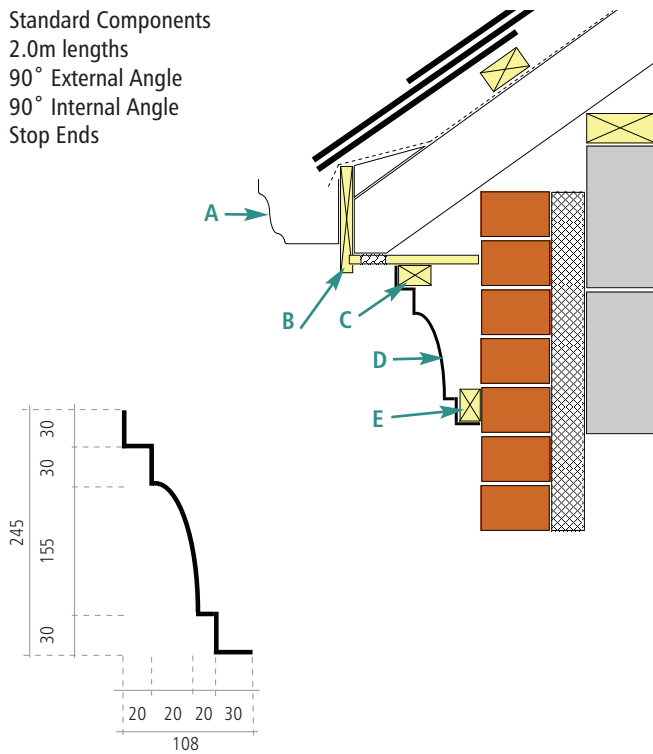
(A) MOG Gutter | (B) 185 x 25mm Treated SW Fascia  
(C) GRP Type A Cornice | (D) 50 x 32mm Treated SW Bearer



# CORNICE AND FASCIAS

## Type B Cornice

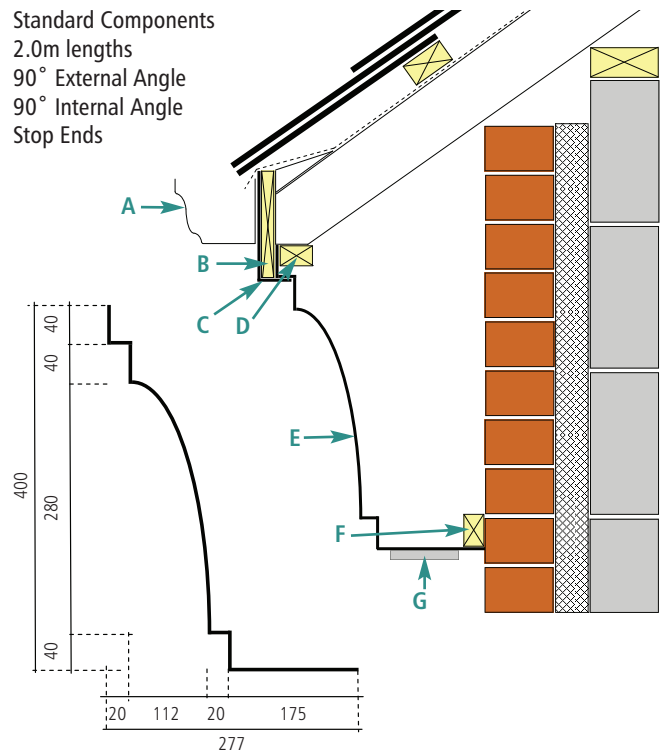
Standard Components  
2.0m lengths  
90° External Angle  
90° Internal Angle  
Stop Ends



(A) MOG Gutter | (B) 185 x 25mm Treated SW Fascia  
(C) 50 x 32mm Treated SW Bearer | (D) GRP Type B Cornice  
(E) 50 x 32mm Treated SW Bearer

## Type C Cornice

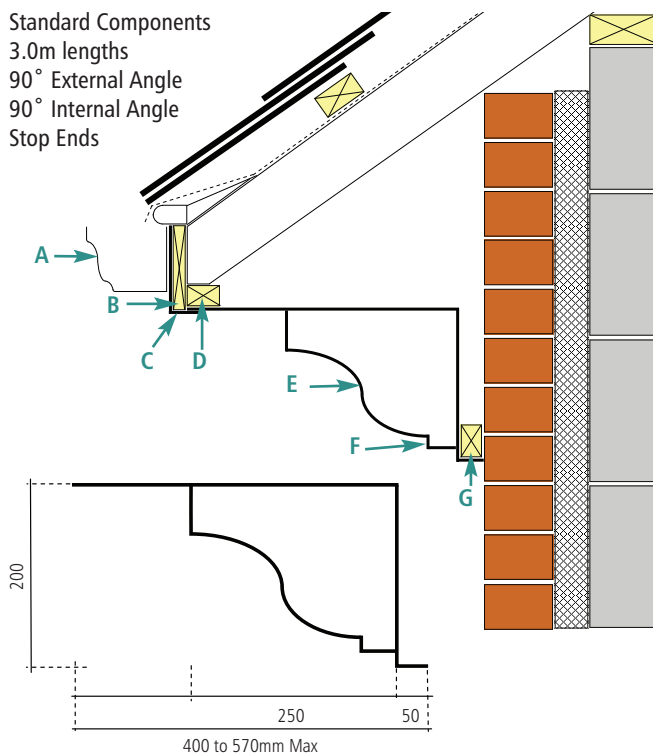
Standard Components  
2.0m lengths  
90° External Angle  
90° Internal Angle  
Stop Ends



(A) MOG Gutter | (B) 185 x 25mm Treated SW Fascia  
(C) GRP Fascia Board | (D) 50 x 32 mm Treated SW Bearer  
(E) GRP Type C Cornice | (F) 50 x 32mm Treated SW Bearer  
(G) Rytons Push & Lock Ventilator 70mm ID/83mm OD @ 230mm C/s

## Type E Dentil / Soffit

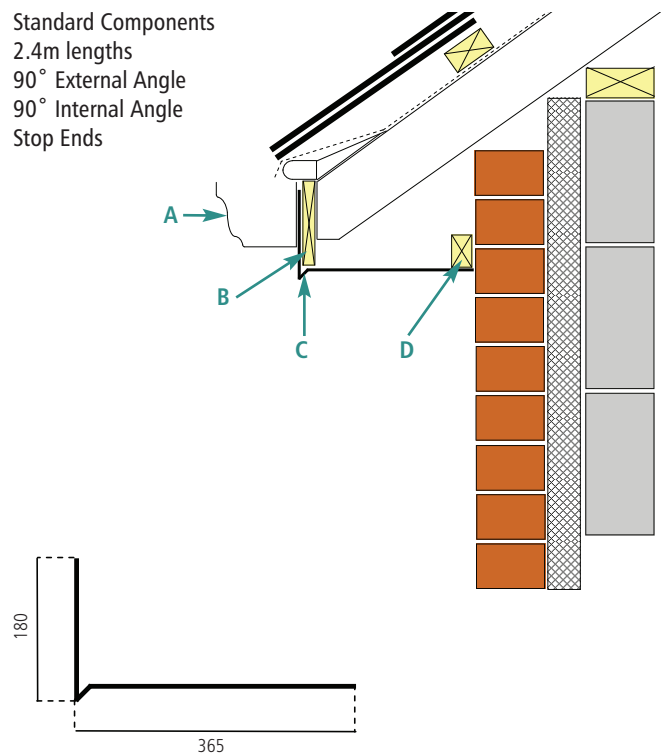
Standard Components  
3.0m lengths  
90° External Angle  
90° Internal Angle  
Stop Ends



(A) MOG Gutter | (B) 185 x 25mm Treated SW Fascia  
(C) GRP Fascia Board | (D) 50 x 32 mm Treated SW Bearer  
(E) Dentils are at 600mm Centres and are 100mm wide  
(F) GRP Type E Dentil / Soffit | (G) 50 x 32mm Treated SW Bearer

## Type F Fascia / Soffit

Standard Components  
2.4m lengths  
90° External Angle  
90° Internal Angle  
Stop Ends

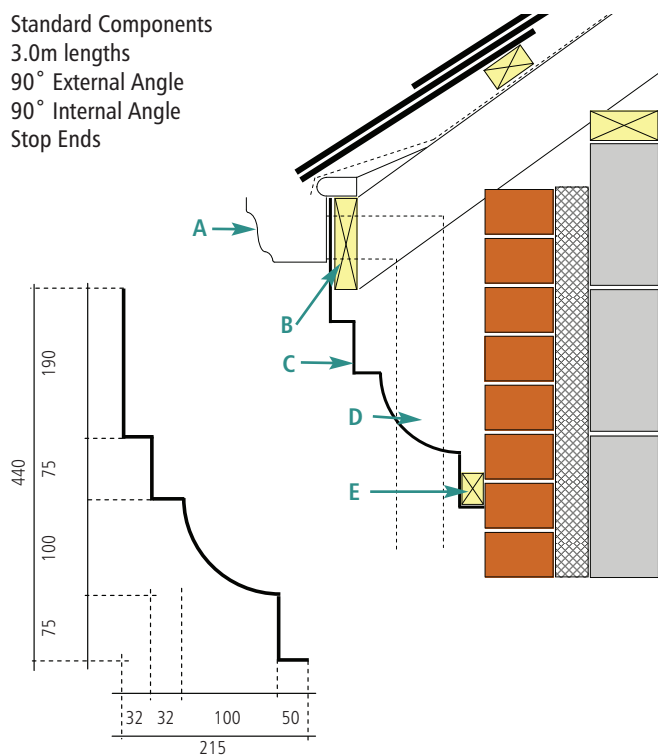


(A) MOG Gutter | (B) 185 x 25mm Treated SW Fascia  
(C) GRP Type F Fascia / Soffit | (D) 50 x 32mm Treated SW Bearer



### Type G Cornice / Fascia

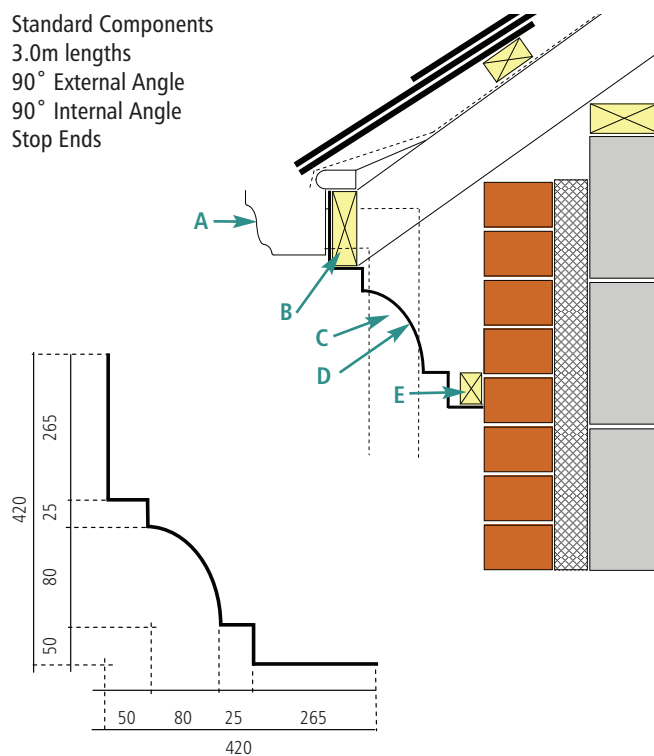
Standard Components  
3.0m lengths  
90° External Angle  
90° Internal Angle  
Stop Ends



(A) MOG Gutter | (B) 150 x 50mm Treated SW Bearer  
(C) GRP Type G Cornice and Fascia | (D) 75mm Dia Rear Outlet  
(E) 50 x 32mm Treated SW Bearer

### Type H Cornice / Fascia

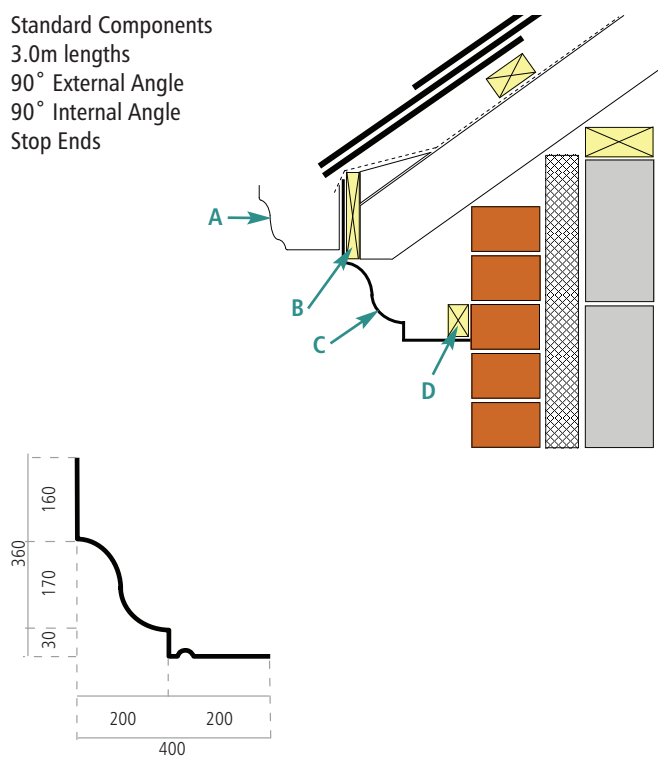
Standard Components  
3.0m lengths  
90° External Angle  
90° Internal Angle  
Stop Ends



(A) MOG Gutter | (B) 110 x 50mm Treated SW Bearer  
(C) 75mm Dia Rear Outlet | (D) GRP Type H Cornice and Fascia  
(E) 50 x 32mm Treated SW Bearer

### Type J Cornice / Fascia

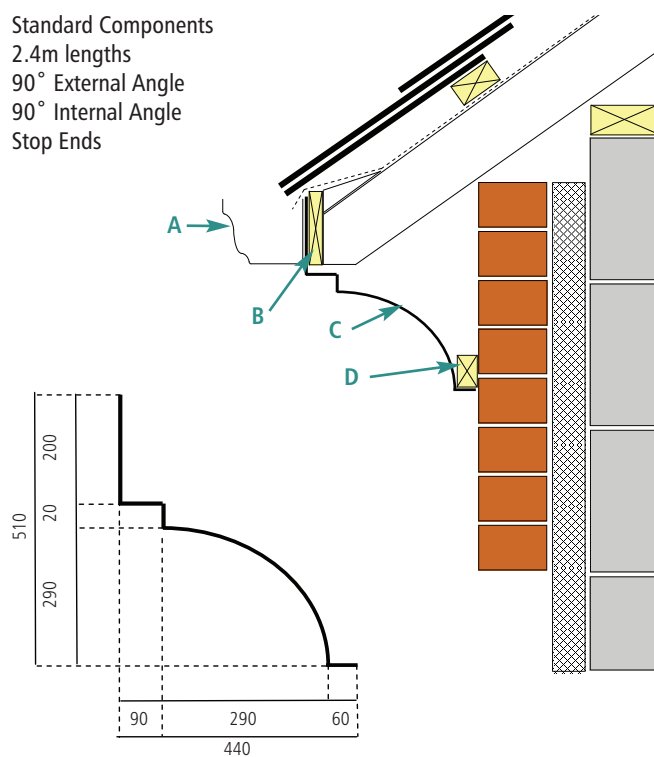
Standard Components  
3.0m lengths  
90° External Angle  
90° Internal Angle  
Stop Ends



(A) MOG Gutter | (B) 185 x 25mm Treated SW Fascia  
(C) GRP Type J Cornice | (D) 50 x 32mm Treated SW Bearer

### Type K Cornice / Fascia

Standard Components  
2.4m lengths  
90° External Angle  
90° Internal Angle  
Stop Ends



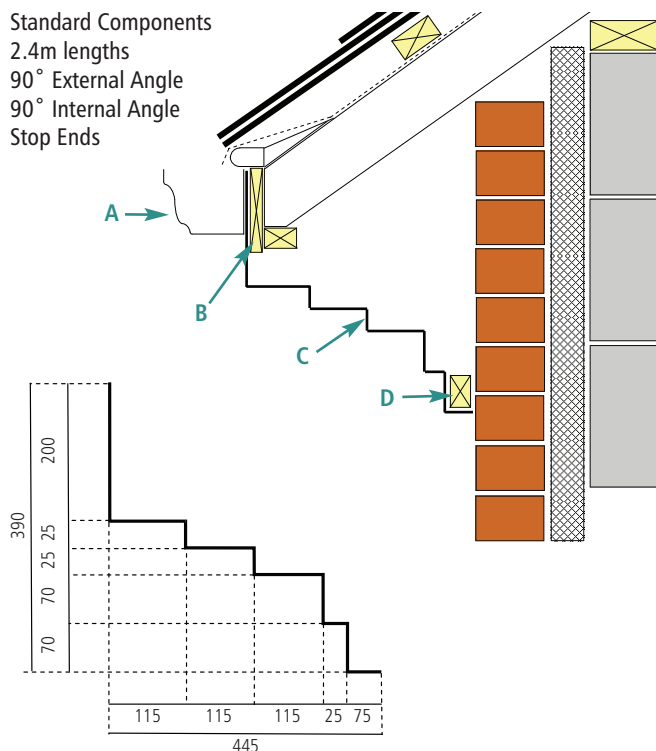
(A) MOG Gutter | (B) 185 x 25mm Treated SW Fascia  
(C) GRP Type K Cornice | (D) 50 x 32mm Treated SW Bearer



# CORNICE AND FASCIAS

## Type L Cornice & Fascia

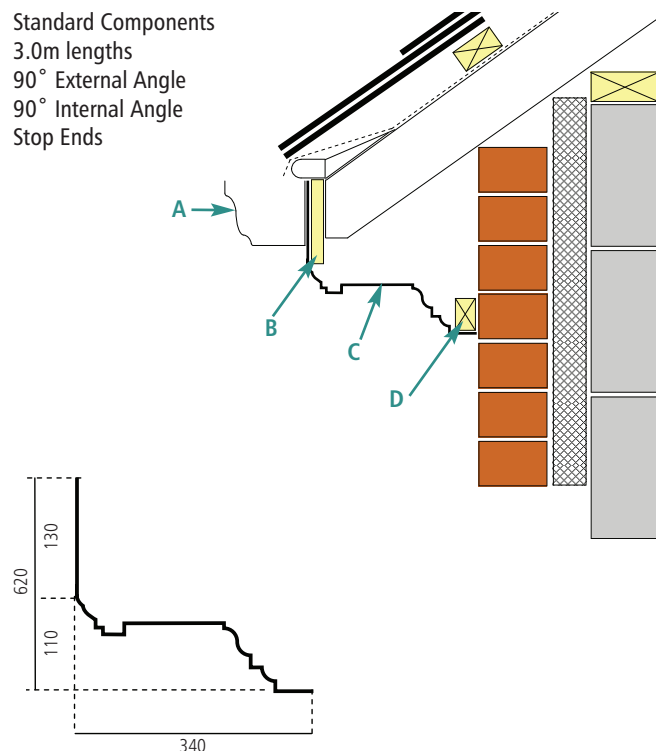
Standard Components  
2.4m lengths  
90° External Angle  
90° Internal Angle  
Stop Ends



(A) MOG Gutter | (B) 185 x 25mm Treated SW Fascia  
(C) GRP Type L Cornice and Fascia | (D) 50 x 32mm Treated SW Bearer

## Type M Cornice & Fascia

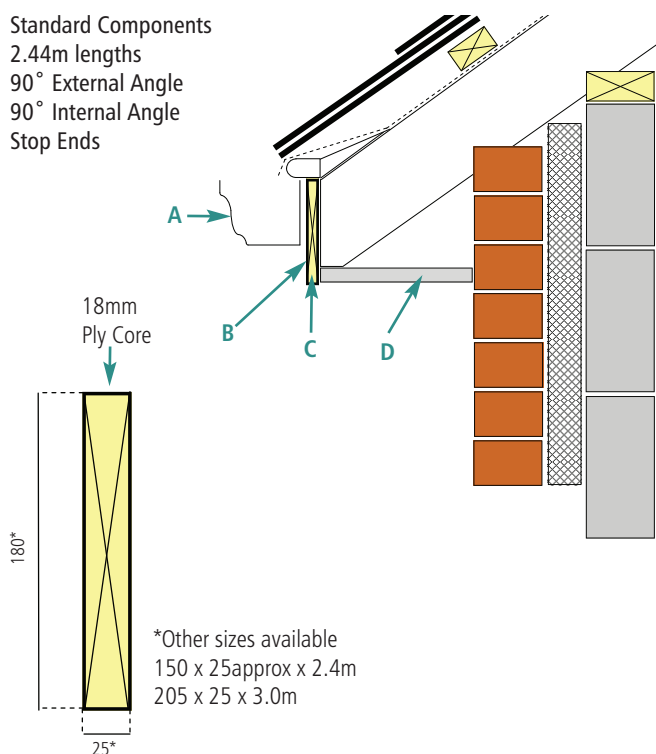
Standard Components  
3.0m lengths  
90° External Angle  
90° Internal Angle  
Stop Ends



(A) MOG Gutter | (B) 130 x 25mm Treated SW Fascia  
(C) GRP Type M Cornice and Fascia | (D) 50 x 32mm Treated SW Bearer

## Type N Fascia Board

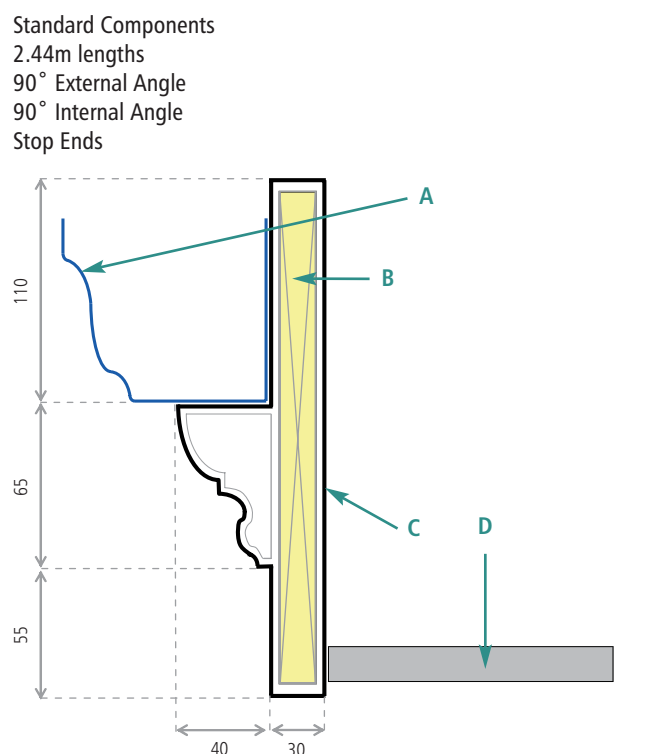
Standard Components  
2.44m lengths  
90° External Angle  
90° Internal Angle  
Stop Ends



(A) MOG Gutter | (B) GRP N Fascia Board  
(C) 18mm Plywood Core | (D) Soffit Boards

## Type P Fascia Board

Standard Components  
2.44m lengths  
90° External Angle  
90° Internal Angle  
Stop Ends

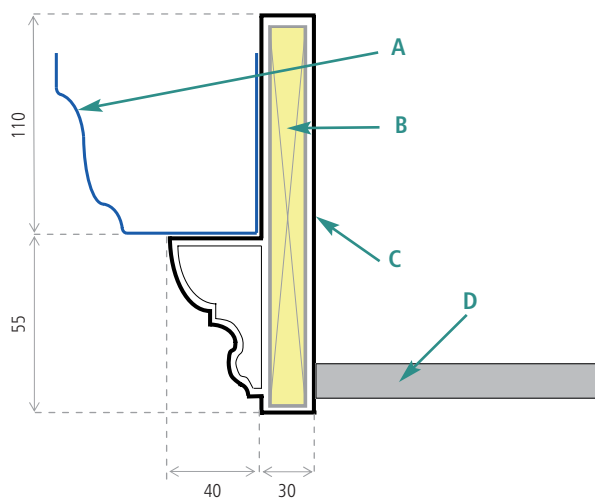


(A) MOG Gutter | (B) 18mm Integral Plywood Core  
(C) GRP Fascia Board | (D) Soffit Boards

Outlet section available

### Type Q Fascia Board

Standard Components  
2.44m lengths  
90° External Angle  
90° Internal Angle  
Stop Ends

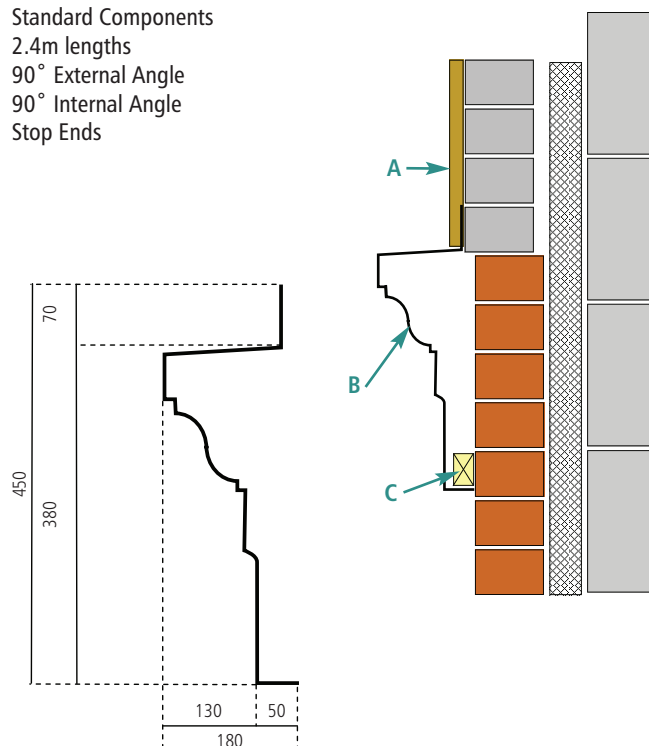


(A) MOG Gutter | (B) 18mm Integral Plywood Core  
(C) GRP Fascia Board | (D) Soffit Boards

Outlet section available

### Type R Band Course

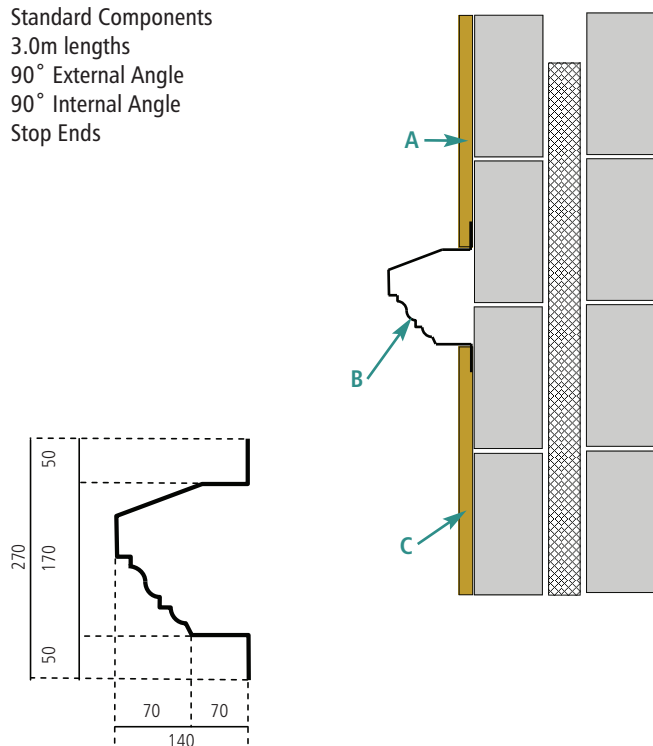
Standard Components  
2.4m lengths  
90° External Angle  
90° Internal Angle  
Stop Ends



(A) Render Coat | (B) GRP Type R Band Course  
(C) 50 x 32mm Treated SW Bearer

### Type S Band Course

Standard Components  
3.0m lengths  
90° External Angle  
90° Internal Angle  
Stop Ends



(A) Render Coat | (B) GRP Type S Band Course  
(C) Render Coat





# ANTICLIMB

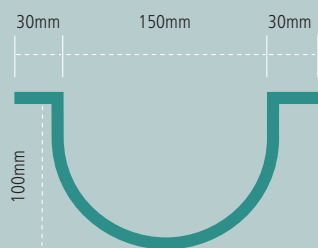
Yeoman Anticlimb is manufactured from GRP which is lightweight and virtually maintenance free.

The system fits over existing downpipes, fully encasing them, thus making climbing pipes virtually impossible.

It can be manufactured in any colour and, as the material is through coloured, no routine painting is necessary.

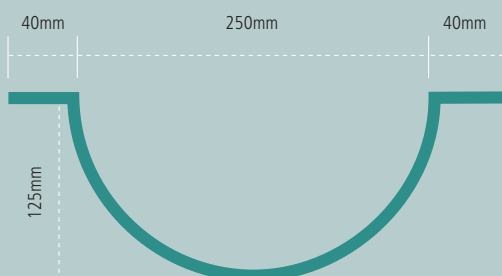
Detailed below are our standard profiles, however we can manufacture to individual requirements.

Type A



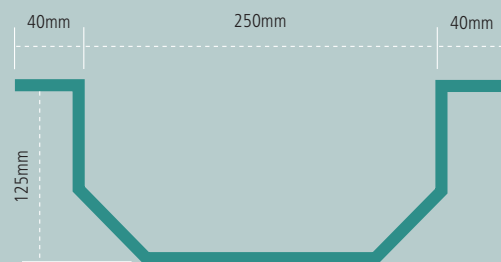
Length 2.4m

Type B



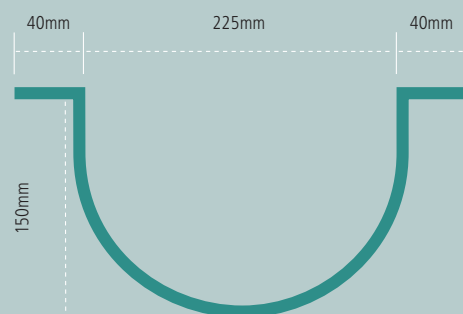
Length 3.0m

Type C



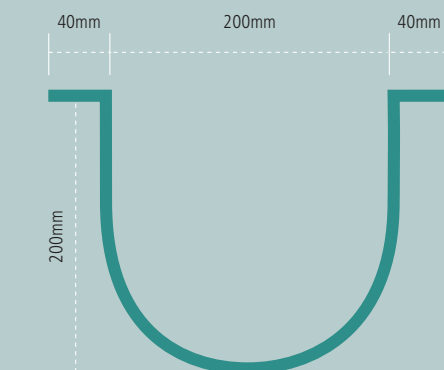
Length 3.0m

Type D



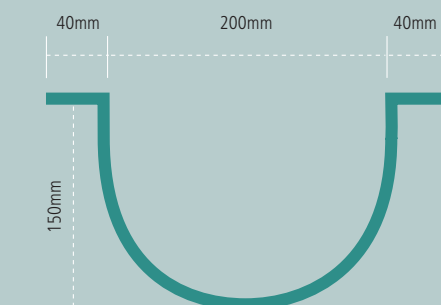
Length 3.0m

Type E



Length 3.0m

Type F



Length 3.0m





**DETERS  
INTRUDERS**

**PREVENTS  
CLIMBING**

**BRINGS PEACE  
OF MIND**

ANTICLIMB



# TESTIMONIALS



"We were delighted with the quality of products and prompt service we received from Yeoman Rainguard. Its specialist skills were very impressive and we were kept advised of progress at every stage of the job".

**Trevor Parker,**  
Leeds Methodist Mission Property and Conference Manager.  
Cast Iron Downpipes at Leeds Methodist Mission, Leeds.



"The rainwater systems look perfect on the finished property and we are very pleased with the quality of products and service that Yeoman Rainguard gave us."

**Mrs Burns,** Watermead Homes.

Yeoman Rainguard XL Aluminium Gutters & Downpipes in black on multi million pound property in Virginia Water.



"The quality and authentic, traditional feel to Yeoman Rainguard Rainwater Systems reflect the quality of products and workmanship that Persimmon Homes have put into this prestigious development." **Andrew Clarke,** Persimmon Homes.

Yeoman Rainguard XL Aluminium, Gutters, Downpipes & GRP special fabricated fascia in grey, Birch Hill Gardens development, Persimmon Homes.





"The Copper rainwater system proved simple enough to fit and the staff at Rainguard were happy to answer any queries we had. We are very pleased with the result."

**Nicola Corrigan**, Lynnic Associates.

Copper Gutters & Downpipes from Yeoman Rainguard on a new build, part of a 7 unit development at Chesterfield by Lynnic Associates.



"Yeoman Rainguard products ticked all the boxes for us on quality, style and ease of installation".

**Tony Robinson** of Mulbrand Ltd.

XL Aluminium Gutters & Downpipes with Plain Cast Aluminium Hoppers in anthracite grey, luxury new build.



"We are very pleased with the rainwater systems provided by Yeoman Rainguard and believe they fit in perfectly with the characteristics of the house."

**David Barratt**, owner, Haven Hall.

White Yeoman Rainguard GRP Gutters, Downpipes & Hoppers on Haven Hall Hotel, Isle of Wight.



# COLOUR OPTIONS

## Colour can bring any project to life

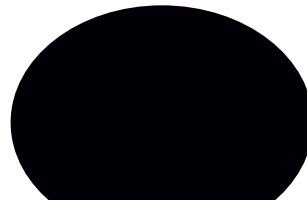
Yeoman Rainguard have endeavoured to develop a colour palette in line with today's market demands. Most are readily available within just a few days with a choice of smooth or textured depending on material.

As well as those colours detailed we are able to offer any BS5252 (inc BS4800) colour as well as the RAL colour range.

We can also colour match from other colour ranges too.

Should you need any additional information regarding colour or finish then please do not hesitate to contact our Sales Office on 0113 279 5854.

## Standard Colours Aluminium & GRP



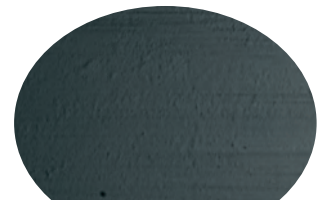
Jet Black

RAL 9005

## Cast Iron



Grey Transit Coat



Black

Additional Charge

## Vision Range Available in Aluminium & GRP (Additional Charge refer to Sales Office)



Basalt Grey

RAL 7012



Anthracite Grey

RAL 7016



Graphite Grey

RAL 7024



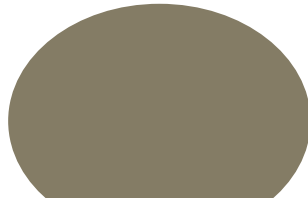
Pebble Grey

RAL 7032



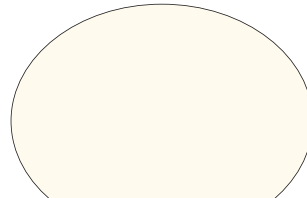
Agate Grey

RAL 7038



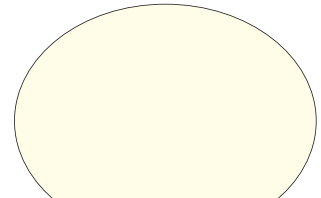
Olive Grey

RAL 7002



Signal White

RAL 9003



Pure White

RAL 9010



Cream

RAL 9001



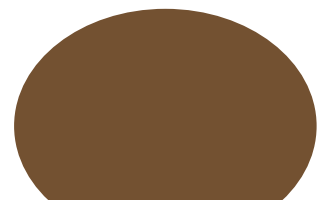
Oyster white

RAL 1013



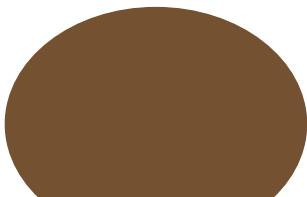
Ivory

RAL 1014



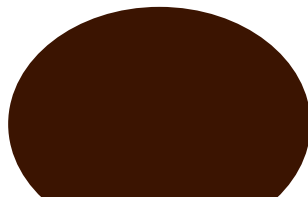
Pale Brown

RAL 8025



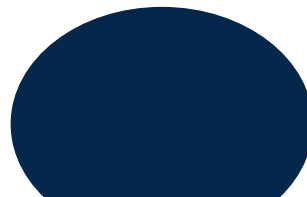
Mahogany Brown

RAL 8016



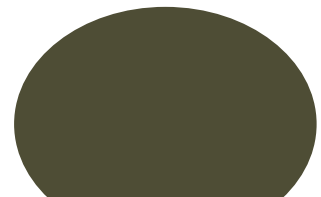
Chocolate Brown

RAL 8017



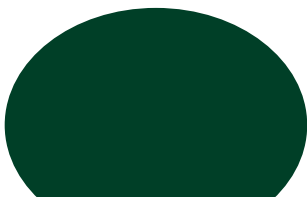
Steel Blue

RAL 5011



Olive Green

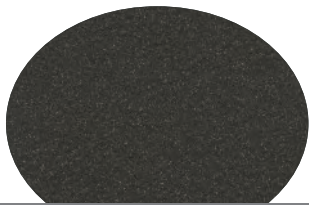
RAL 6003



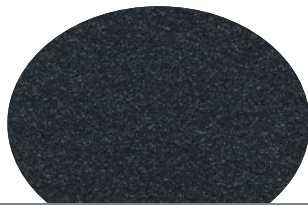
Moss Green

RAL 6005

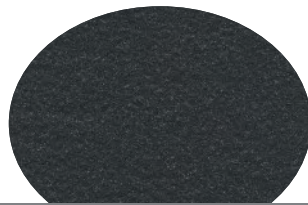
## Metalics Aluminium only



YW353F BRUN 2650 Sable



YW360F NOIR 2200 Sable

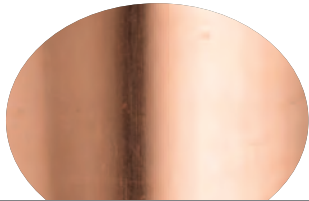


YW359F NOIR 2100 Sable



YX353F STARLIGHT 2525 Sable

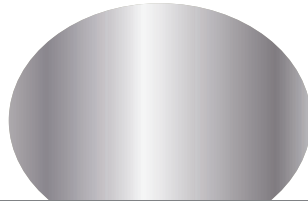
## Copper, Zinc & Stainless Steel



Copper




Natural Zinc



Stainless Steel







# YEOMAN RAINGUARD

RAINWATER SYSTEMS



## Harrison Thompson

Making Business a Pleasure

Harrison Thompson & Co Ltd.,  
Yeoman House, Whitehall Estate, Whitehall Road,  
Leeds LS12 5JB

t: 0113 279 5854 f: 0113 231 0406

e: [info@rainguard.co.uk](mailto:info@rainguard.co.uk)

[www.rainguard.co.uk](http://www.rainguard.co.uk)



Harrison Thompson & Co Ltd. has a policy of continual product enhancement and reserves the right to alter any specifications without notice. E.&O.E. No part of this publication may be reproduced, stored in a retrieval system, or transmitted, in any form by any means, electronic, mechanical, photographic, recording or otherwise, without the prior permission of Harrison Thompson & Co Ltd. All rights reserved.