

XL ALUMINIUM GUTTERS

Composition Design & Manufacture

Yeoman Rainguard XL Aluminium Gutters are extruded profiles using aluminium alloy to EN AW-6063 T6 BS EN 12020 – 2:2001.

Gutters are designed to be fixed direct to fascia board (with the exception of half round), thus removing the need for fascia brackets. However, fascia brackets together with rafter brackets and rise & fall brackets are available if required. Gutter lengths are pre punched at 500mm centres to aid installation.

Gutters are joined using an internal joint clip which does not require any mechanical fixings.

Silicone joint sealant is used to create a long lasting water tight seal.

Shape & Dimensions

Profiles are as detailed and are supplied in standard 3.0m and 2.0m lengths.

Standard Accessories

Running outlets, stop end outlets (handed), 90° external and internal angles, 135° external and internal angles, stop ends (handed), joint clips, fascia brackets, rafter brackets, rise & fall brackets, silicone joint sealant, stainless steel fixing screws.

Optional Accessories

Non-standard angles, special gutter configurations (made to order), special brackets.

Colours & Finishes

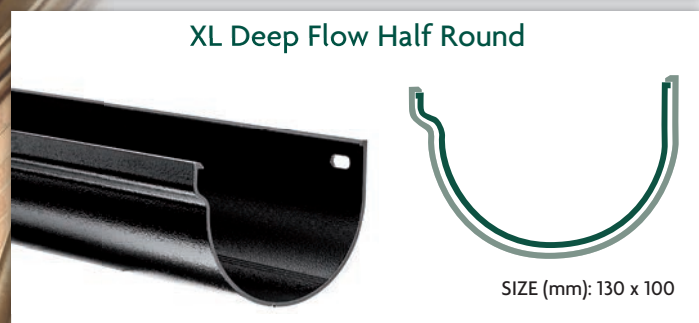
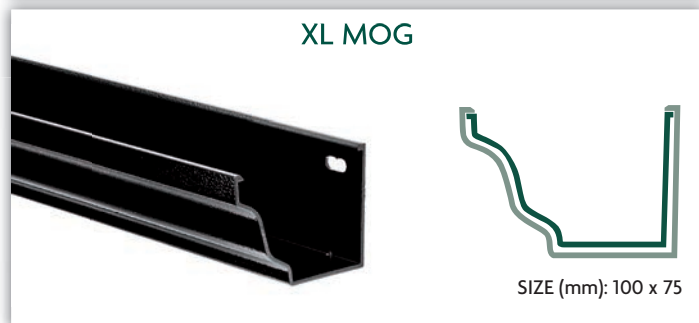
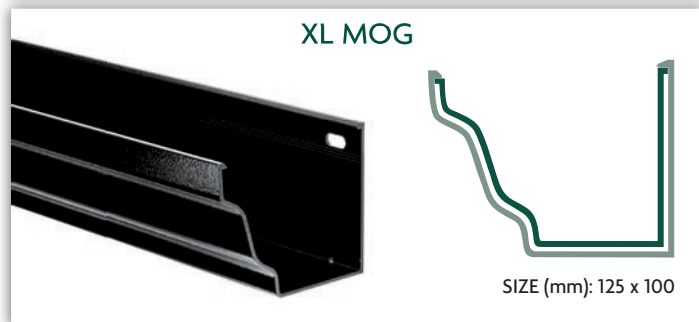
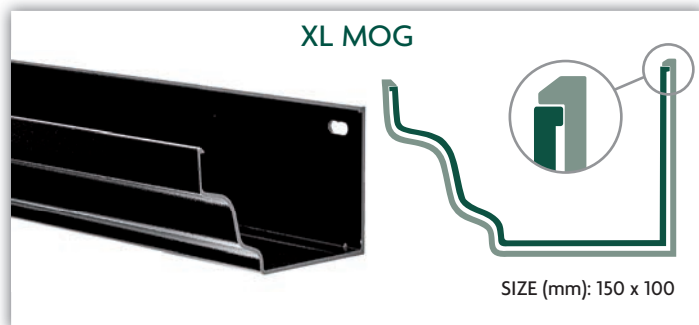
All gutters and accessories are pre finished in Black textured polyester powder coating to give years of maintenance free service. White is also available as standard. Our Vision colour range is also readily available to order at a small premium (see colour & finishes on pages 46-47). Products can also be supplied in standard mill finish.

Maintenance

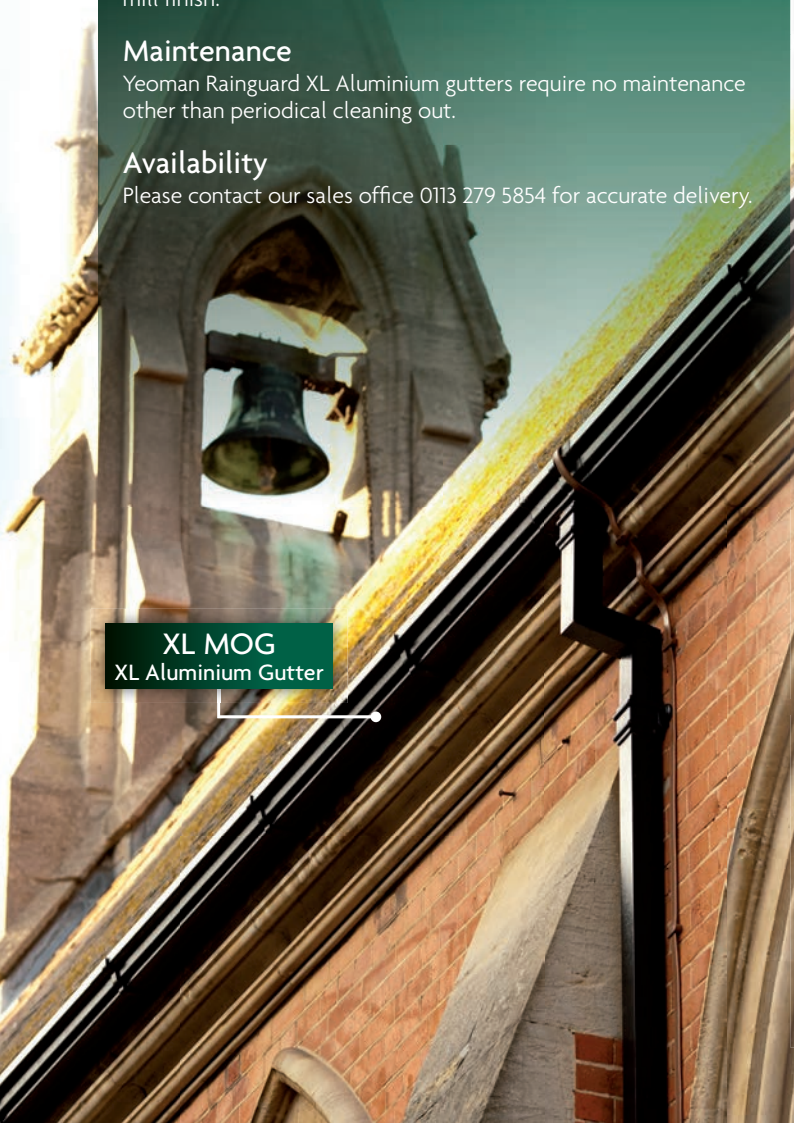
Yeoman Rainguard XL Aluminium gutters require no maintenance other than periodical cleaning out.

Availability

Please contact our sales office 0113 279 5854 for accurate delivery.



XL MOG
XL Aluminium Gutter



XL Aluminium Gutter Accessories (Available in all profiles)

Running Outlet



Stop End Outlet



Available left or right hand.

90° External Angle



90° Internal Angle



135° External Angle



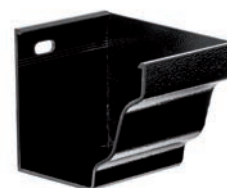
135° Internal Angle



Left Hand Stop End



Right Hand Stop End



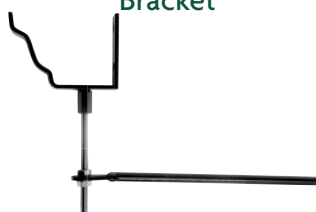
Joint Clip



Fascia Bracket



Drive-in Rise and Fall Bracket



Adjustable Rafter Bracket



Top fix also available.

Stainless Steel Fixing Screw



Silicone Joint Sealant



Epoxy Resin



For use with drive-in rise & fall.

XL MOG
XL Aluminium Gutter

